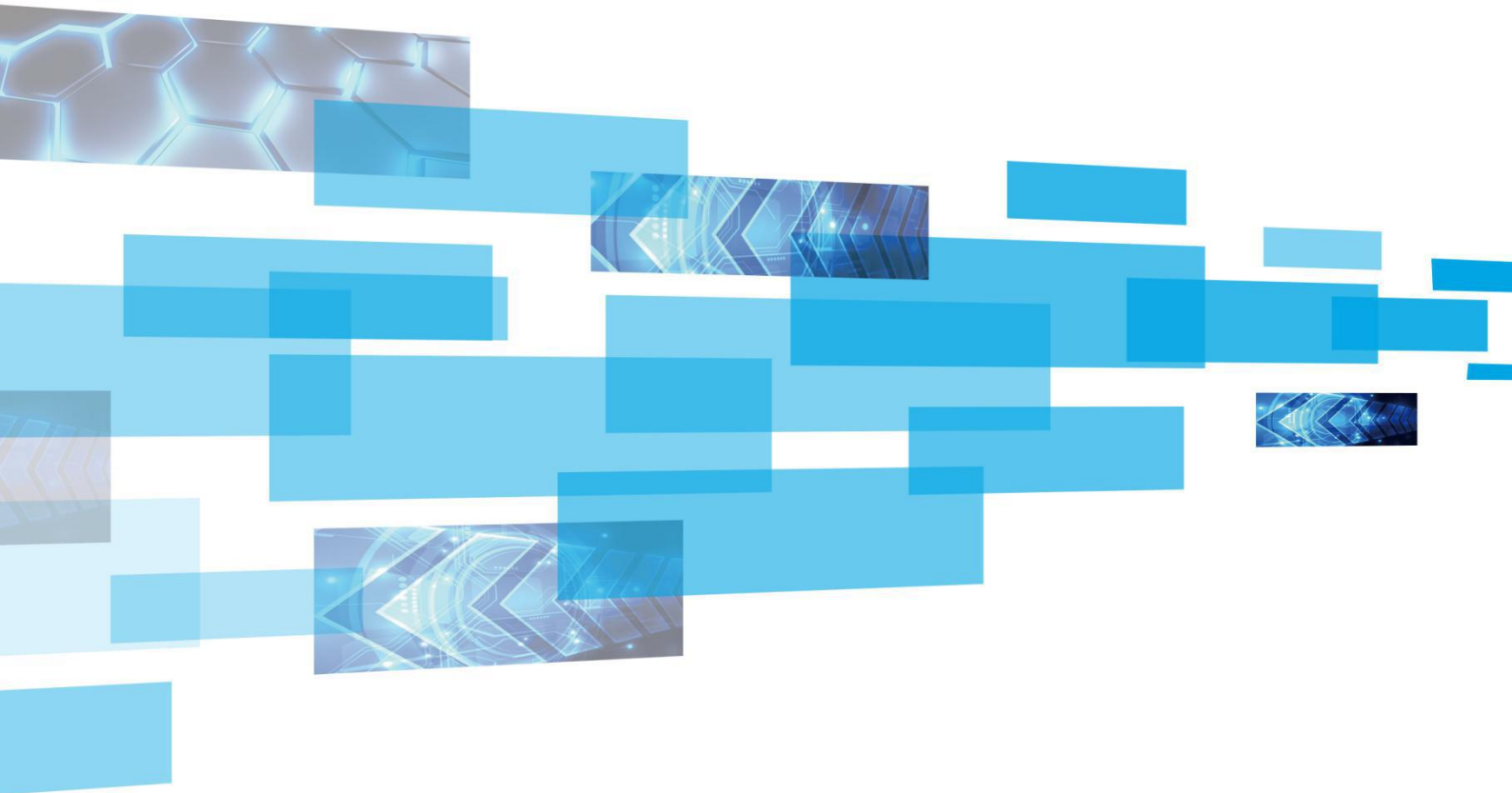




Univisal receiver

D90-A4S



Product Specification

Version No.: Ver.1.0

Doc No.: SYS/C3-0103009092

Clarification

Dear customers, thanks for choosing Shanghai XIXUN Electronic Limited (Sysolution for short)' s LED control system. This document will fast introduce this new product and help you how to use it. We will not notice you when updating this document. When meeting any problems or have any advices during usage of our LED control system, please contact us directly, we will be very happy to help you and appreciate your advice.

Copyright

The copyright of this document belongs to Sysolution company. Without the written permission of the company, any unit or individual will be compelled to copy and extract the contents of this article in any form.

Brand



has been registered by Sysolution company.

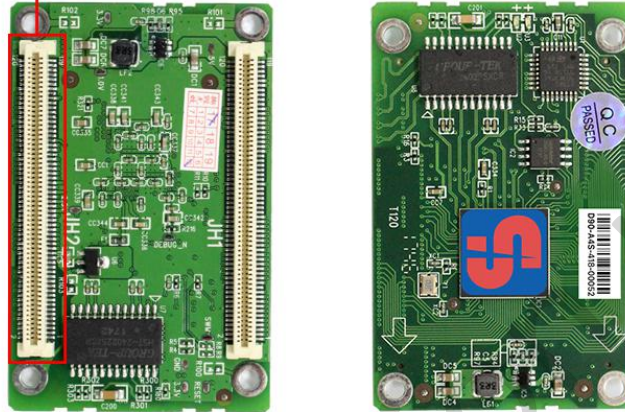
Update record

No.	Version No.	Updates	Revision date
1	Ver.1.0	Initial issue	2018.04.15

www.sysolution.net

Appearance

2*60PIN Board to Board Female Connector



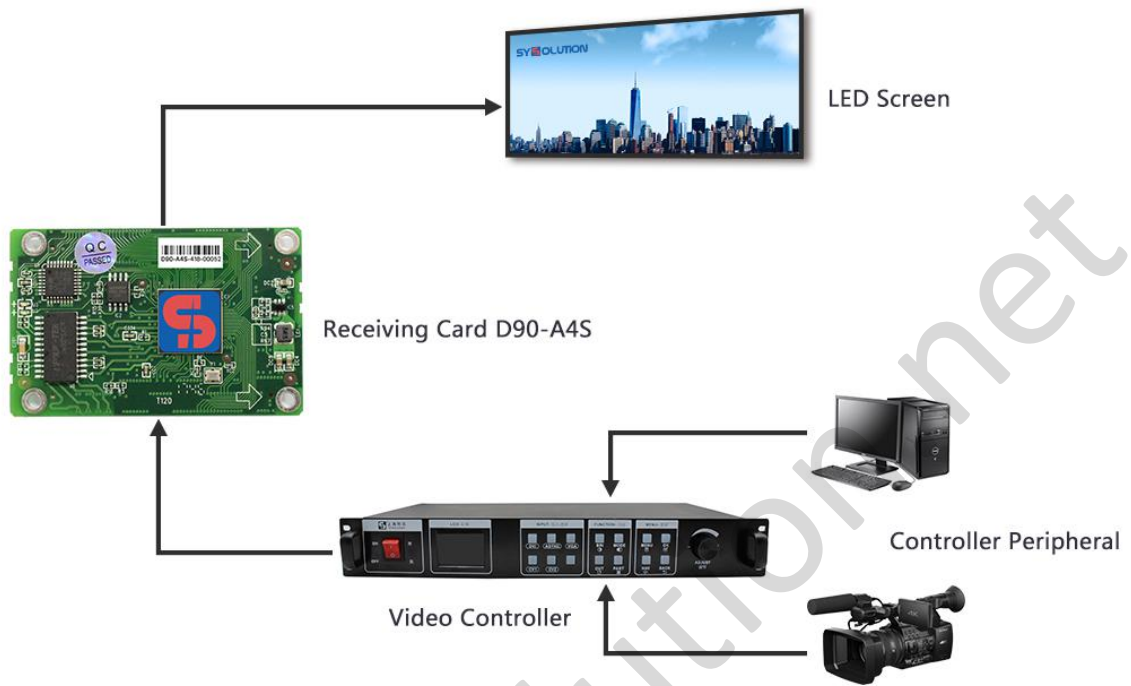
Univisal receiving card D90-A4S

Technical Parameters

Features options	Typical value	Maximum value
Supported screen type	Single/dual/full color screens; Real/virtual pixel	
Supported receiving card quantity, cascading by single network cable	<1000	1000
Supported resolution by one	128*128	96K pixels

receiving card		
RGB output group of one receiving card	24	24
Lines of one set of RGB driver	1/2/4/8/16/32	1~32
Optical fiber transmit distance	Multi-mode optical fiber: 500Meters; single module optical fiber: 10KM	
Other features	10b video source, LED display self-detecting, OE protection	
Working current	0.6A	1.0A
Working temperature	-10°C - 65°C	
Extreme working temperature	-20°C - 75°C	
Working humidity (%)	0%-95%	

Connection

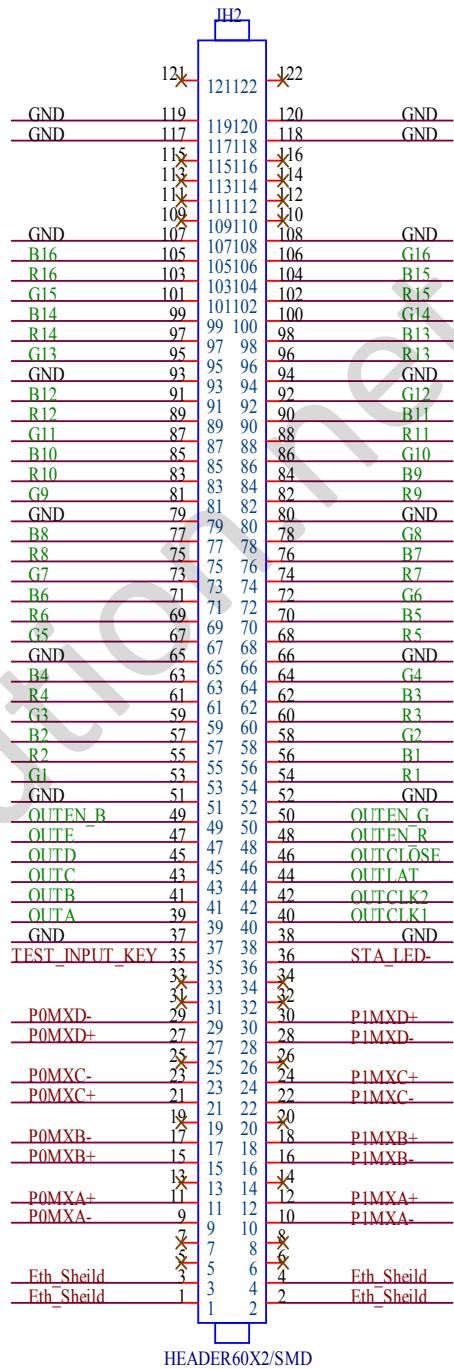
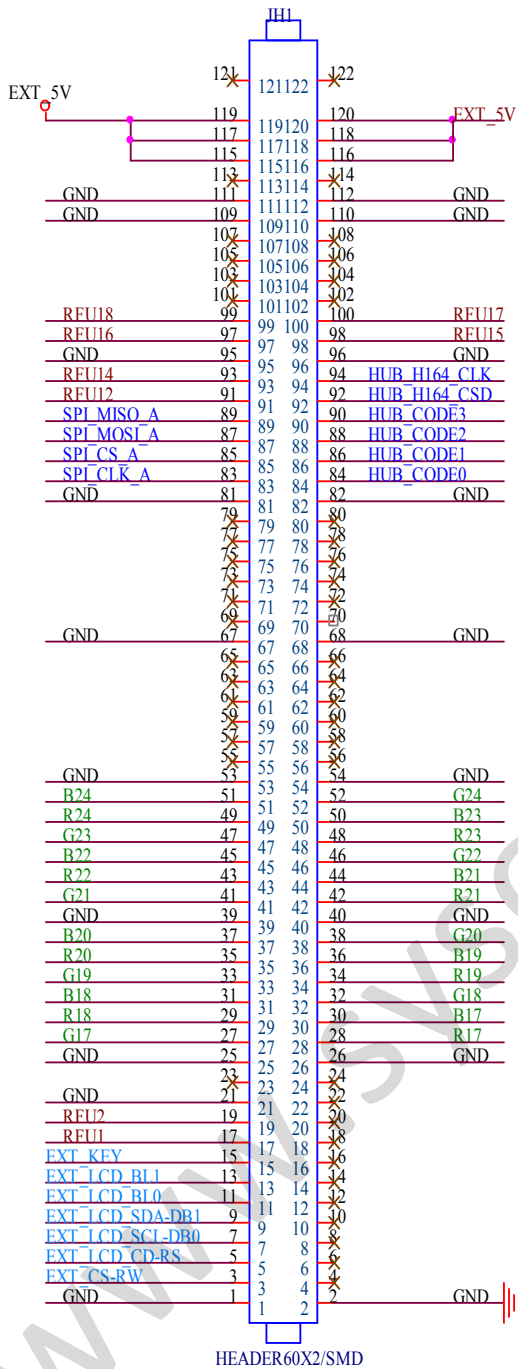


Performances

D90-A4S is new product promoted by XIXUN company, with tiny size but high standard universal receiving card, it has following features:

1. 24 sets of RGB output;
2. Support 8/10BIT modes of input image gray level;
3. Output Maximum 20BIT gray level;
4. Support 96K pixels of single receiving card;
5. Wide voltage input range, input voltage range: +3.5V---+5.5V;
6. High refresh rate, high brightness and high gray level for general driver ICs;
7. Support read-back parameters from receiving card;
8. Dual backup for the network cable and support data detecting of ribbon cables;
9. Support monitoring for temperature, humidity, power voltage and fans of led screen cabinets;
10. Support to debug point by point for the brightness and chroma;
11. Support variety of driver ICs including PWM IC, point by point detecting IC and general IC;
12. Support monitoring for external environment;
13. Provide power pin for each port, support charge power from led panel;
14. RoHs and CE-EMC compliant.

Definition of Output Port



JH1 definition

Definition	Pin	Pin	Definition
GND	1	2	GND

EXT_CS_RW	3	4	NULL
EXT_LCD_CD_RS	5	6	NULL
EXT_LCD_SCL_DB0	7	8	NULL
EXT_LCD_SCL_DB1	9	10	NULL
EXT_LCD_BL0	11	12	NULL
EXT_LCD_BL1	13	14	NULL
EXT_KEY	15	16	NULL
RFU1	17	18	NULL
RFU2	19	20	NULL
GND	21	22	NULL
NULL	23	24	NULL
GND	25	26	GND
G17	27	28	R17
R18	29	30	B17
B18	31	32	G18
G19	33	34	R19
R20	35	36	B19
B20	37	38	G20
GND	39	40	GND
G21	41	42	R21
R22	43	44	B21
B22	45	46	G22
G23	47	48	R23
R24	49	50	B23

B24	51	52	G24
GND	53	54	GND
NULL	55	56	NULL
NULL	57	58	NULL
NULL	59	60	NULL
NULL	61	62	NULL
NULL	63	64	NULL
NULL	65	66	NULL
GND	67	68	GND
NULL	69	70	NULL
NULL	71	72	NULL
NULL	73	74	NULL
NULL	75	76	NULL
NULL	77	78	NULL
NULL	79	80	NULL
GND	81	82	GND
SPI_CLK_A	83	84	HUB_CODE0
SPI_CS_A	85	86	HUB_CODE1
SPI_MOSI_A	87	88	HUB_CODE2
SPI_MISO_A	89	90	HUB_CODE3
RFU12	91	92	HUB_H164_CSD
RFU14	93	94	HUB_H164_CLK
GND	95	96	GND
RFU16	97	98	RFU15

RFU18	99	100	RFU17
NULL	101	102	NULL
NULL	103	104	NULL
NULL	105	106	NULL
NULL	107	108	NULL
GND	109	110	GND
GND	111	112	GND
NULL	113	114	NULL
5V	115	116	5V
5V	117	118	5V
5V	119	120	5V

JH2definition :

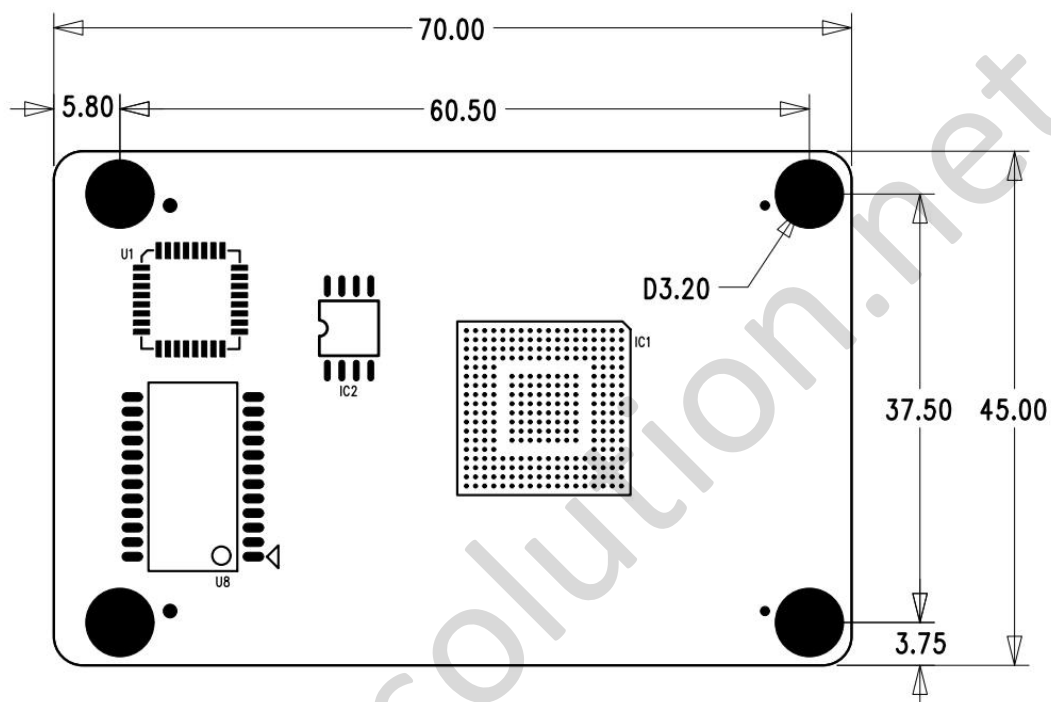
Definition	Pin	Pin	Definition
EARTH	1	2	EARTH
EARTH	3	4	EARTH
NULL	5	6	NULL
NULL	7	8	NULL
P0MXA-	9	10	P1MXA-
P0MXA+	11	12	P1MXA+
NULL	13	14	NULL
P0MXB+	15	16	P1MXB+
P0MXB-	17	18	P1MXB-
NULL	19	20	NULL

P0MXC+	21	22	P1MXC+
P0MXC-	23	24	P1MXC-
NULL	25	26	NULL
P0MXD+	27	28	P1MXD-
P0MXD-	29	30	P0MXD+
NULL	31	32	NULL
NULL	33	34	NULL
TEST_INPUT_KEY	35	36	STA-LED-
GND	37	38	GND
OUTA	39	40	OUTCLK1
OUTB	41	42	OUTCLK2
OUTC	43	44	OUTLAT
OUTD	45	46	OUTCLOSE
OUTE	47	48	OUTEN_R
OUTEN_B	49	50	OUTEN_G
GND	51	52	GND
G1	53	54	R1
R2	55	56	B1
B2	57	58	G2
G3	59	60	R3
R4	61	62	B3
B4	63	64	G4
GND	65	66	GND
G5	67	68	R5

R6	69	70	B5
B6	71	72	G6
G7	73	74	R7
R8	75	76	B7
B8	77	78	G8
GND	79	80	GND
G9	81	82	R9
R10	83	84	B9
B10	85	86	G10
G11	87	88	R11
R12	89	90	B11
B12	91	92	G12
GND	93	94	GND
G13	95	96	R13
R14	97	98	B13
B14	99	100	G14
G15	101	102	R15
R16	103	104	B15
B16	105	106	G16
GND	107	108	GND
NULL	109	110	NULL
NULL	111	112	NULL
NULL	113	114	NULL
NULL	115	116	NULL

GND	117	118	GND
GND	119	120	GND

Dimension



Notes

1. Please follow this instruction exactly.
2. Professionals are needed to install and test the product and has to be anti-static.
3. Keep away from water.

