



Y12-Series Product User Instructions

Version: V.1.0

Statement

Dear user friend, thanks for choosing SHENZHEN SYSOLUTION TECHNOLOGY CO.,LTD (hereinafter referred to as Sysolution) as your LED advertising equipment control system. The main purpose of this document is to help you quickly understand and use the product. We strive to be precise and reliable when writing the document, and the content may be modified or changed at any time without notice.

Copyright

The copyright of this document belongs to Sysolution. Without the written permission of our company, no unit or individual may copy or extract the content of this article in any form.

Trademark



is a registered trademark of Sysolution.

Update Record

| No. | Version | Details | Date |
|-----|---------|---------------|------------|
| 1 | Ver.1.0 | Initial issue | 2024.03.13 |

The document is subject to change without prior notice.

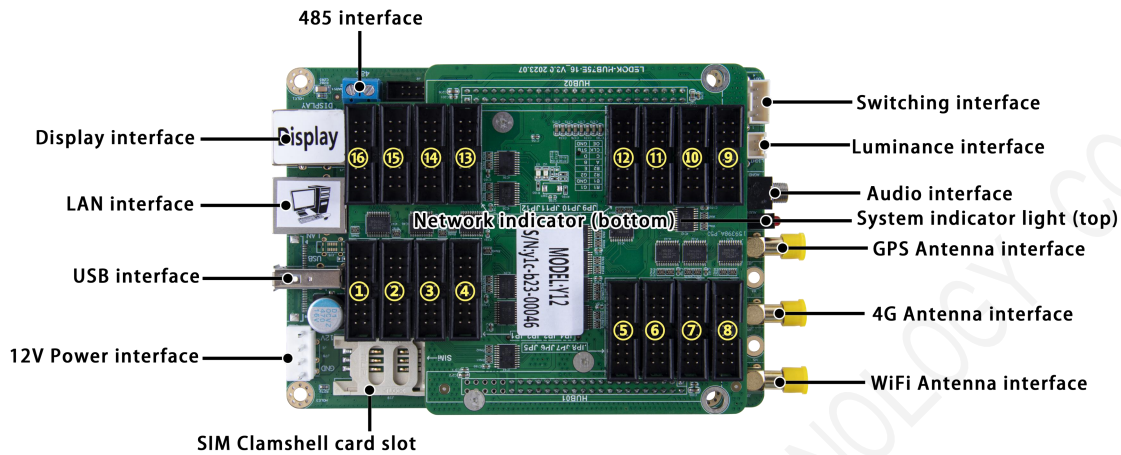
SHENZHEN SYSOLUTION TECHNOLOGY CO., LTD

Catalogue

| | |
|--|----|
| Chapter I Hardware connection | 6 |
| Chapter II Software Installation | 9 |
| Q&A for installing LEDOK Express | 9 |
| Chapter III Communication between LEDOK Express and Led controller | 10 |
| Wire way | 10 |
| Wireless way | 11 |
| Chapter IV Publish New Content by LEDOK Express Software | 13 |
| Send program from LEDOK Express | 13 |
| Terminal Control | 17 |
| Brightness Adjust | 17 |
| Power Control | 19 |
| Network Configuration | 21 |
| Wired Ethernet Configuration | 21 |
| WiFi Configuration | 21 |
| 4G Setup | 23 |
| Time Sync | 24 |
| Set Password | 25 |
| Demonstration of the encryption configuration function | 25 |
| Encrypted method of publishing programs on screen | 27 |
| Volume Adjustment | 28 |
| Advanced | 30 |

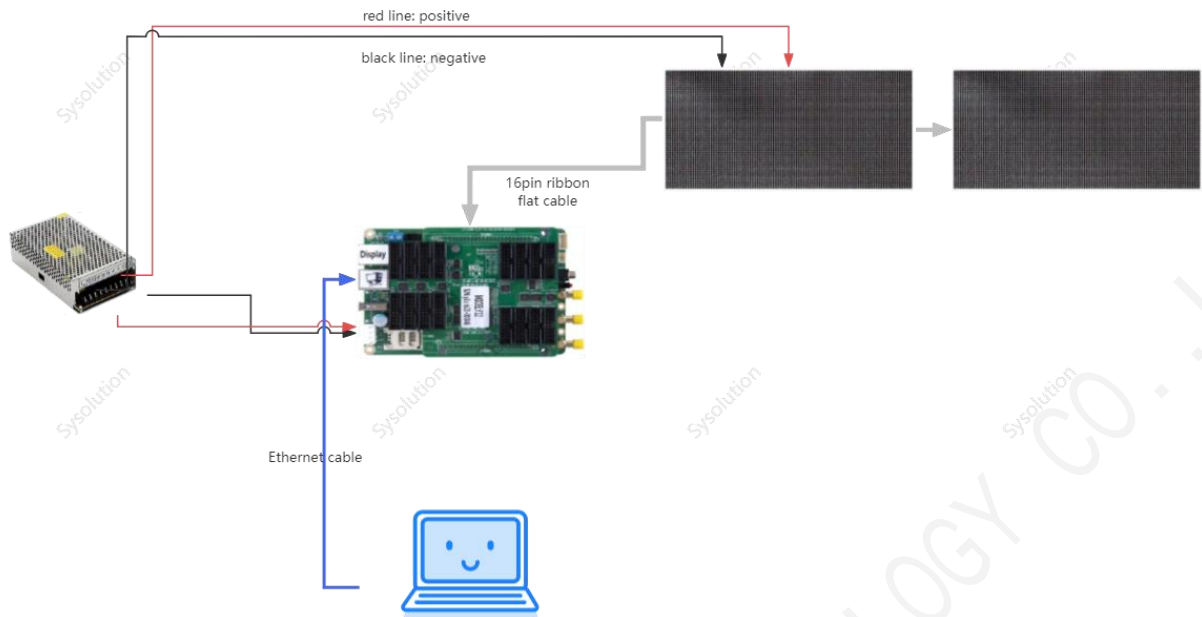
SHENZHEN SYSOLUTION TECHNOLOGY CO., LTD

Chapter I Hardware connection



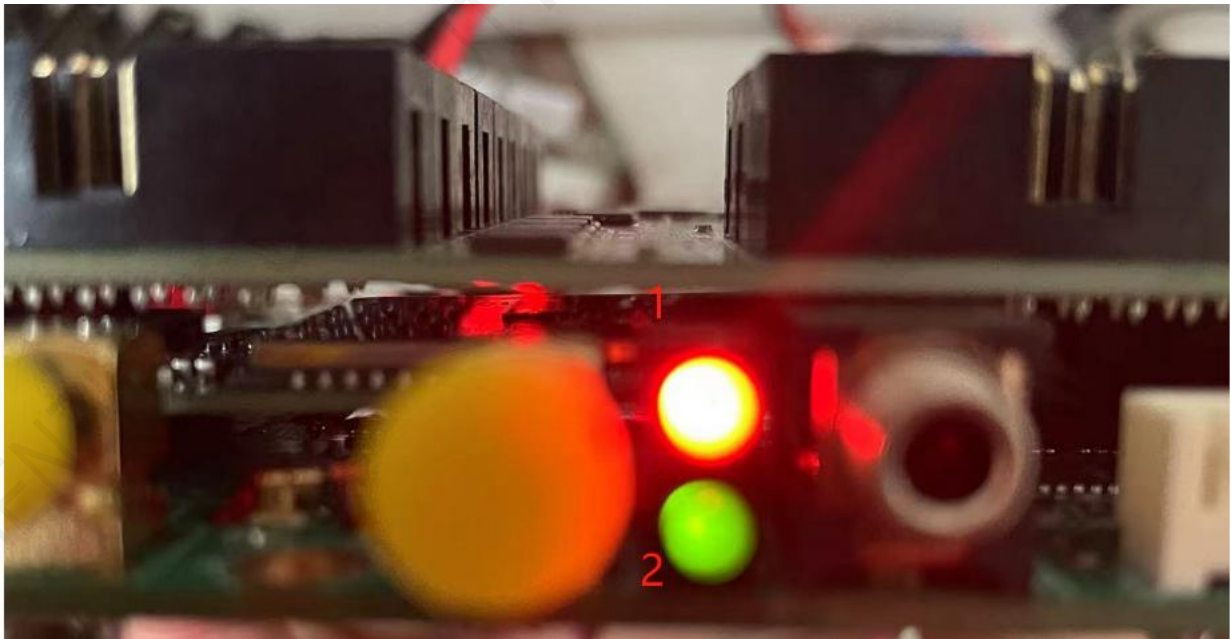
Hardware Preparations:

1. Led controller Y12
2. LED power supply
3. Led power cables
4. led module
5. 16pin flat cables
6. Ethernet cable x1



Turn on power after checking all hardware connection and make sure the Negative and Positive connect is correct.

7. Please note the indicators in led controller:



Power light 1: run light flashing regular

Run light 2: flashing regular when access to internet. Keep off when on AP mode.

SHENZHEN SYSOLUTION TECHNOLOGY CO., LTD

Chapter II Software Installation

Please visit the link in below to download LEDOK Express software for laptop or computer:

1. For Windows:

<https://www.ledok.cn/download/LedOK%20Express%20Setup.exe>

2. For Mac

<https://www.ledok.cn/download/LedOK%20Express.dmg>

Q&A for installing LEDOK Express

1. Download and remind there is a risk of the file?

Answer: Because the LEDOK Express not get the Microsoft authentication, so the windows will remind this risk, don't worry, it will not attack your laptop, you can agree to continue the downloading until it finish.

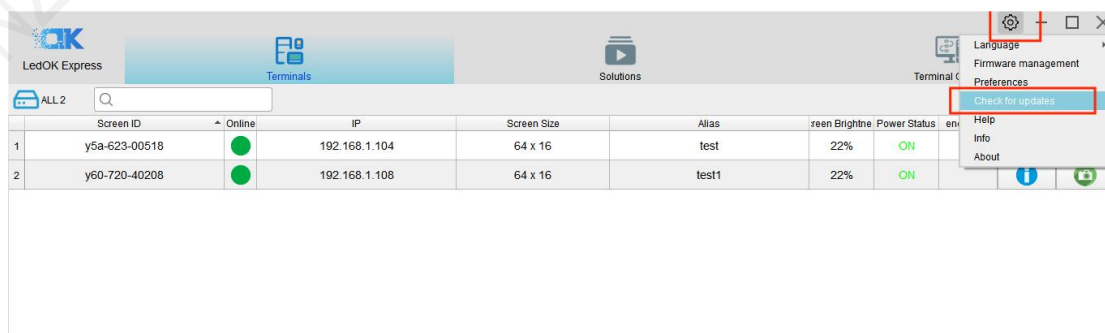
2. Can't go next step to installing?

Answer: please click More options and allow to run, then can continue installing process.

3. When run the LEDOK Express, Windows Firewall remind and stop?

Answer: please go to firewall settings and add the LEDOK Express.exe into the white list.

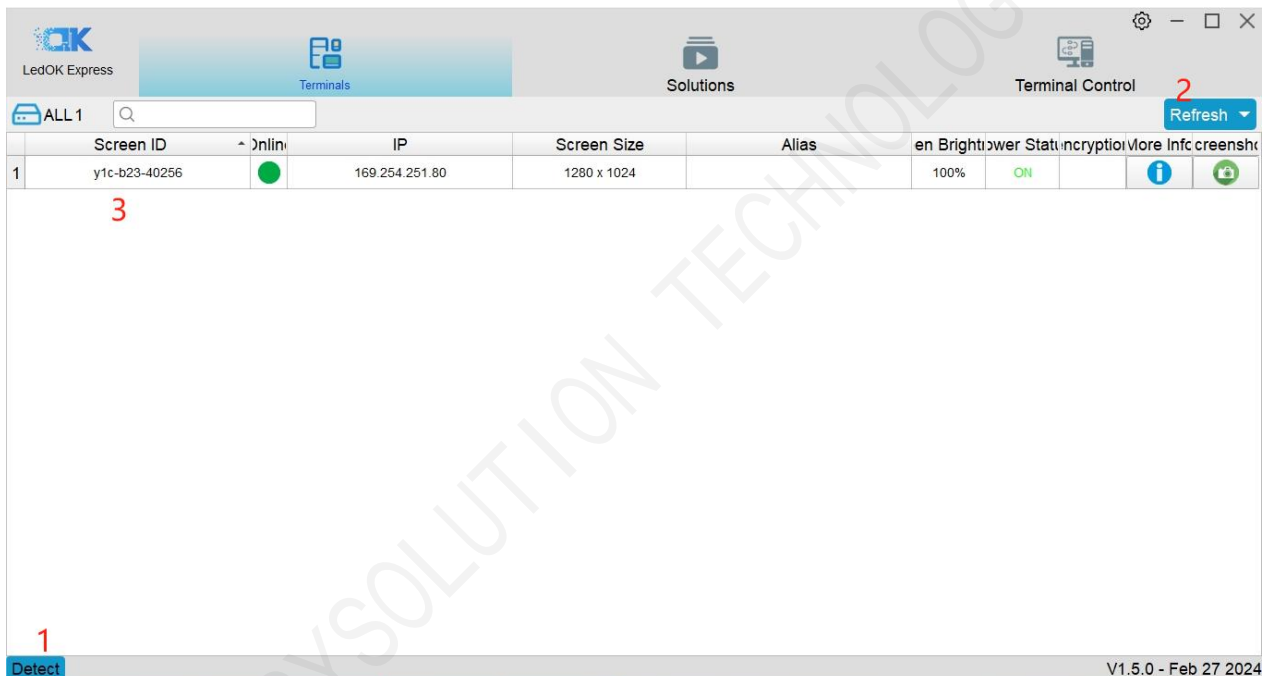
If already have LEDOK Express software, please go and check for update, make sure it is latest version.



Chapter III Communication between LEDOK Express and Led controller

Wire way

Connect the Y12's LAN Ethernet port with laptop through Ethernet cable directly, running LEDOK Express software, click Detect button in the left bottom and click refresh on the right top, then will show Y12 IP address automatically.



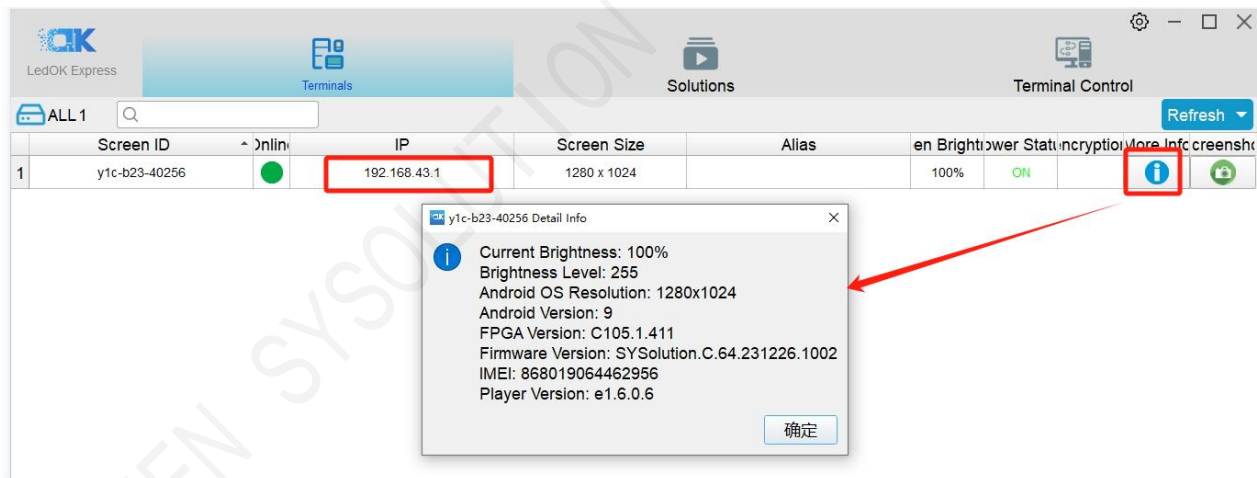
Click "More Information" to get the detailed information of the controller firmware, including android version:



Wireless way

When power on for the Y12 led controller, it will issue a hotspot with the name of the Y1c-xxx-xxx serial ID. So that when the laptop nearby the controller will search this hotspot wifi and connect to it, default password is 12345678



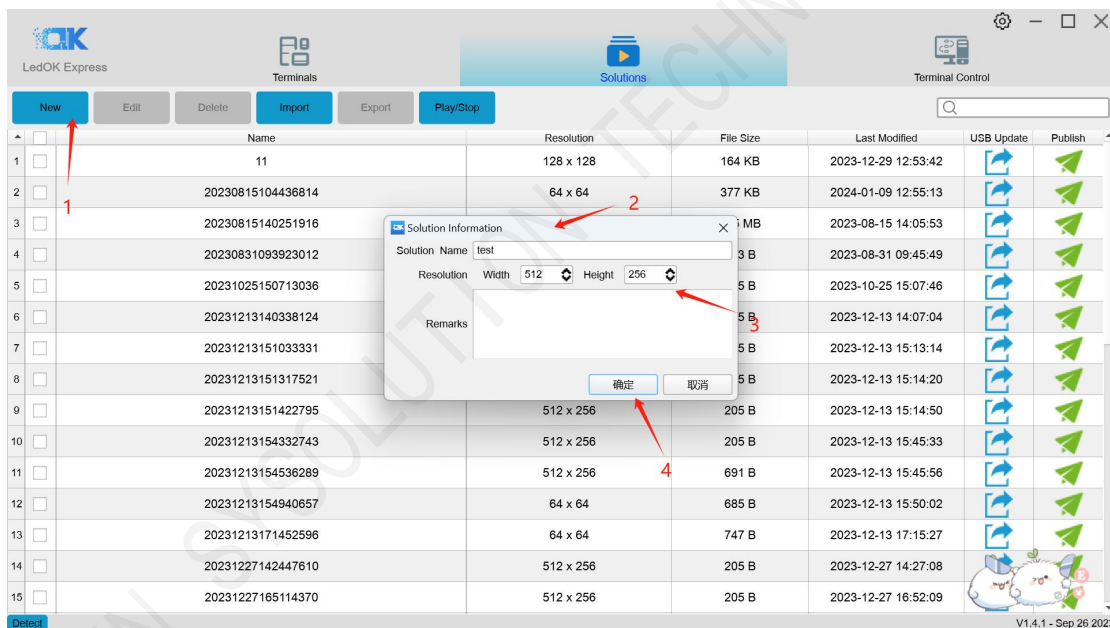


Chapter IV Publish New Content by LEDOK Express Software

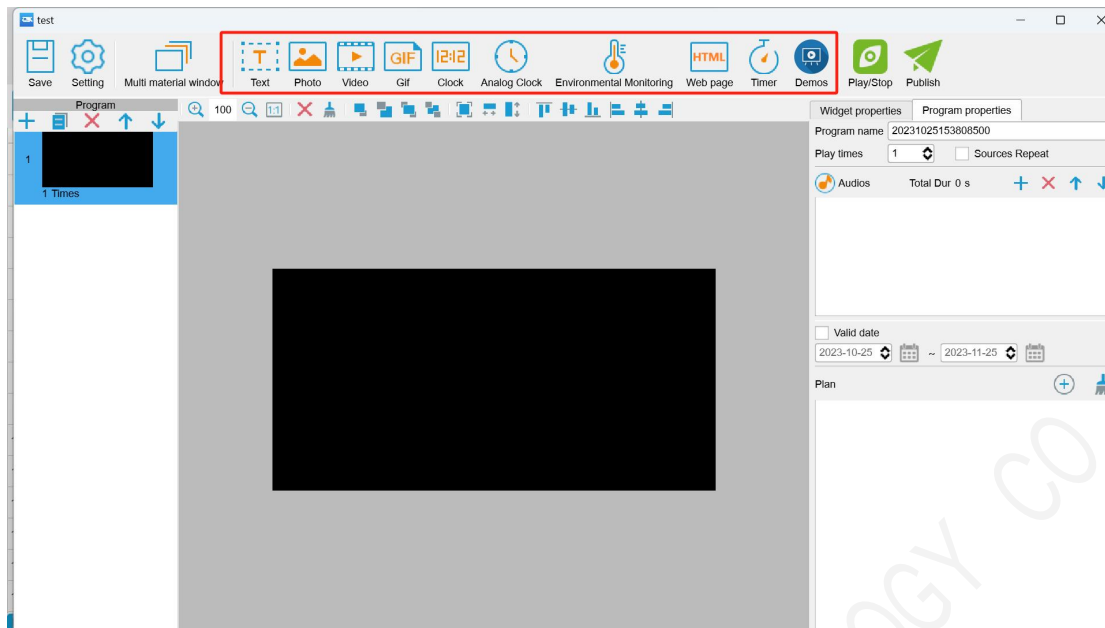
If the LED screen has been setup good in the factory already then client no need to setup again, just need to power up and send the new program content to it.

Send program from LEDOK Express

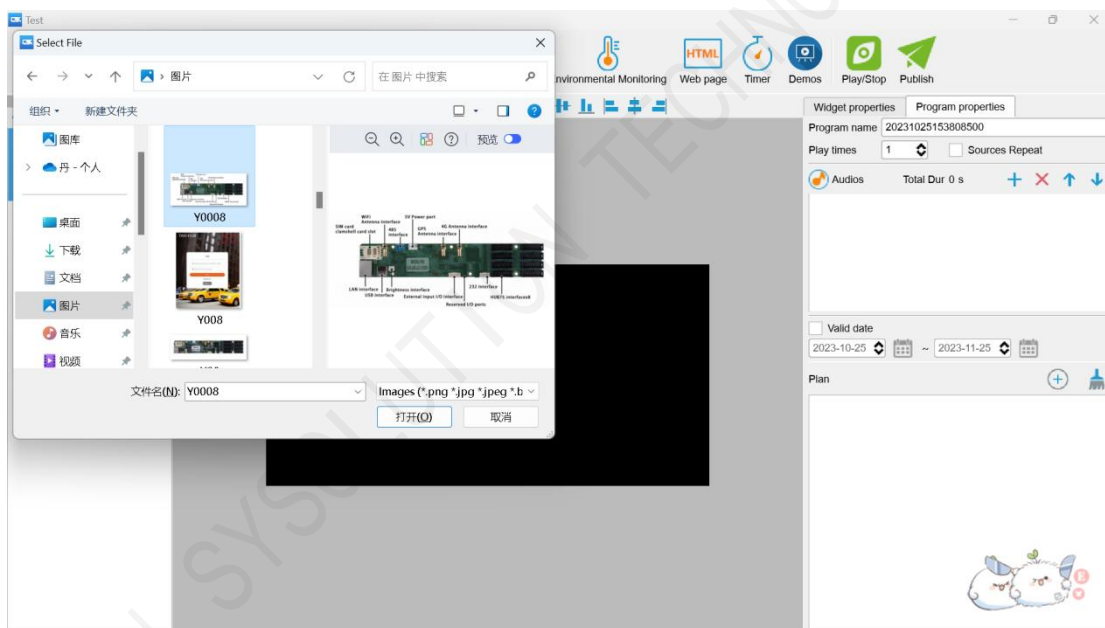
1. Open the program management interface, its name is Solution in software, then click 'New' , input the program name and size information in the dialogue box and enter the editing interface.



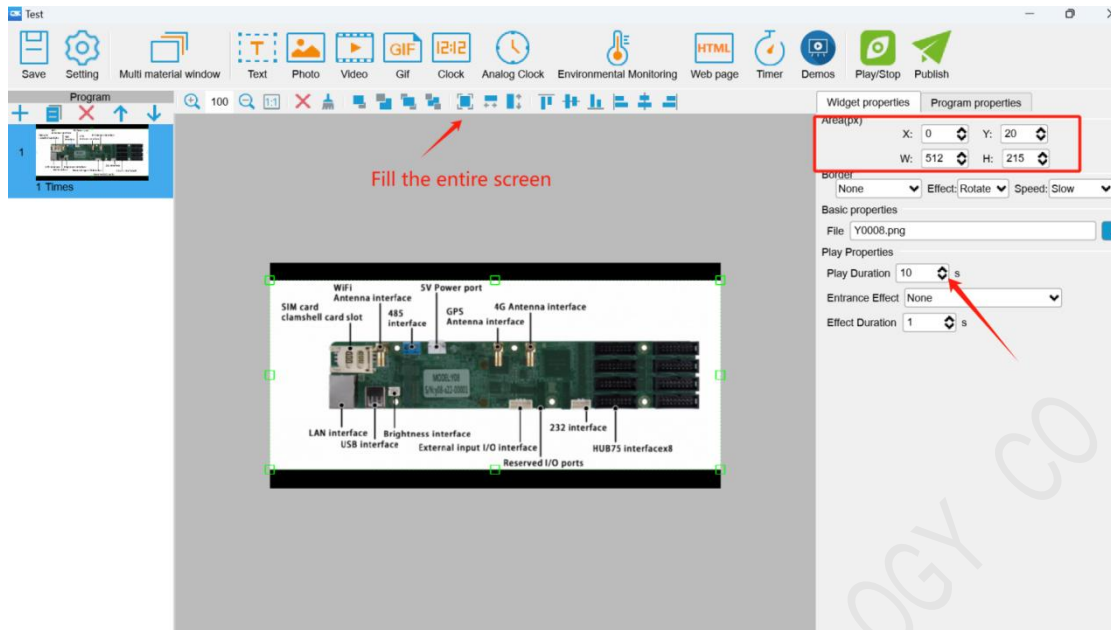
2. As shown in the figure, the top is the type of material that can be added, you can add video, pictures, text, digital clocks, analog clocks, etc., according to the need to choose, this article to pictures and videos as an example.



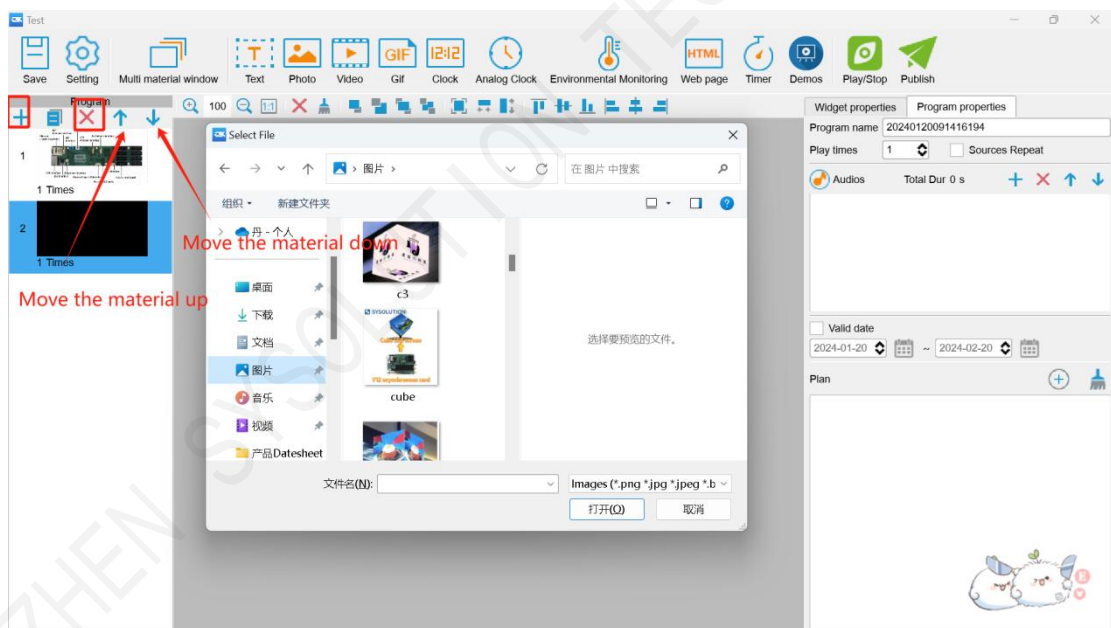
3. Click on the picture and select the picture you want to play.



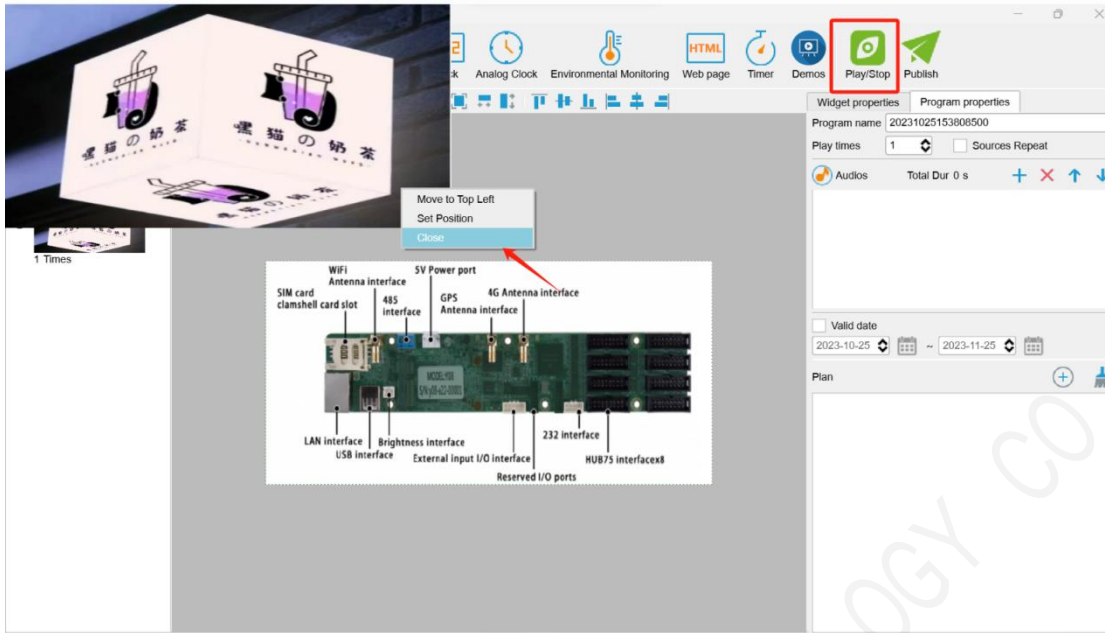
4. After adding the photos, you can click 'full screen' to make the photo spread all over the screen, or you can set the size of the material to make it full screen in the component properties on the right side. The default playback time of the added photo material is 10s, if you need to change the playback time, you can change it in the widget properties.



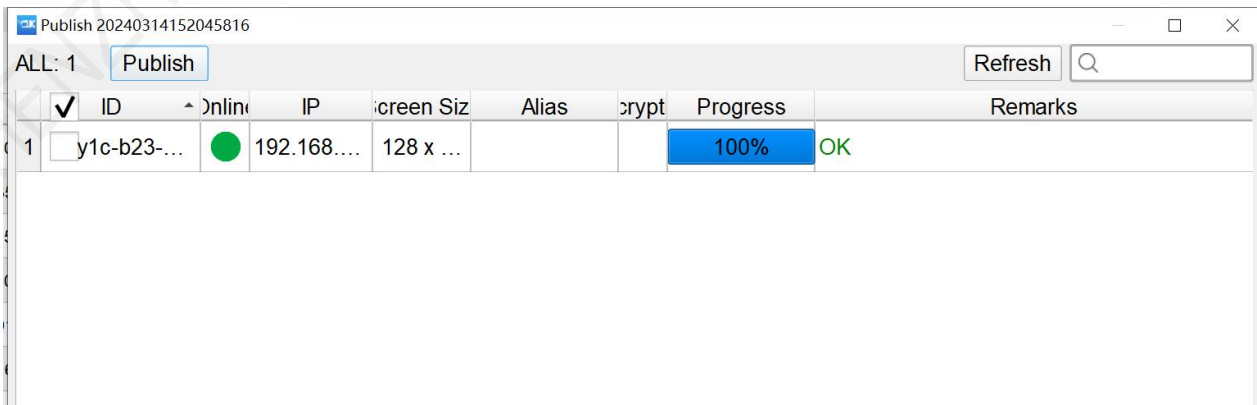
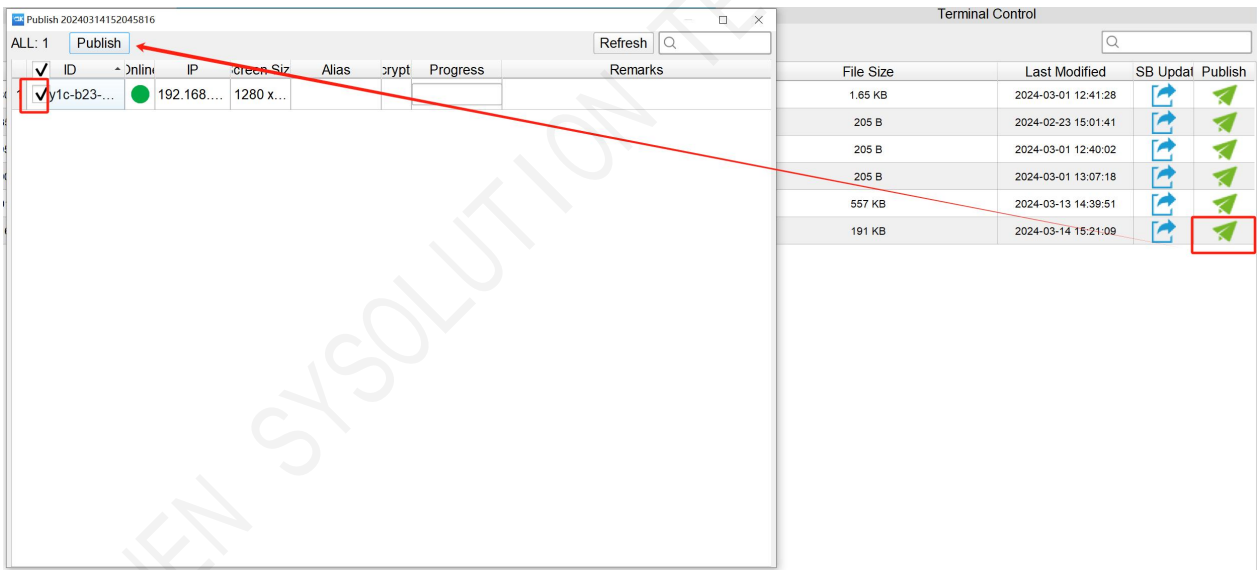
- Click the '+' at the top left to add a second material and the 'X' to delete the material page.



- When the program is finished, you can click 'Play/Stop' on the top to preview the program. You can close the preview by clicking the right mouse button.



7. Click publish button after done all setup, and select the controller id and click send, 100% means send success.

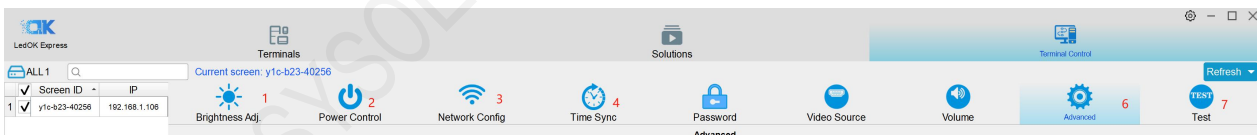


8. The program will show up in the solution list. At this time, you can check the program and click "Edit" to enter the program page again to modify the program and then follow the above steps to send the program.

| | Name | Resolution | File Size | Last Modified | USB Update | Publish |
|----|-------------------|------------|-----------|---------------------|--------------|-----------|
| 13 | 20231213171452596 | 64 x 64 | 747 B | 2023-12-13 17:15:27 | [USB Update] | [Publish] |
| 14 | 20231227142447610 | 512 x 256 | 205 B | 2023-12-27 14:27:08 | [USB Update] | [Publish] |
| 15 | 20231227165114370 | 512 x 256 | 207 B | 2024-01-20 09:26:34 | [USB Update] | [Publish] |
| 16 | 20231227165213163 | 512 x 256 | 205 B | 2023-12-27 16:52:34 | [USB Update] | [Publish] |
| 17 | 20231228154854879 | 512 x 256 | 656 B | 2023-12-28 15:48:00 | [USB Update] | [Publish] |
| 18 | 20231228154826278 | 512 x 256 | 656 B | 2023-12-28 15:48:51 | [USB Update] | [Publish] |
| 19 | 20231228154951664 | 512 x 256 | 656 B | 2023-12-28 15:50:23 | [USB Update] | [Publish] |
| 20 | 20240102174831590 | 64 x 64 | 134 KB | 2024-01-02 17:49:18 | [USB Update] | [Publish] |
| 21 | 20240102174920344 | 64 x 64 | 135 KB | 2024-01-02 17:49:47 | [USB Update] | [Publish] |
| 22 | 22222 | 288 x 96 | 22.9 MB | 2023-12-15 12:18:48 | [USB Update] | [Publish] |
| 23 | green | 64 x 64 | 16 KB | 2024-01-02 18:06:48 | [USB Update] | [Publish] |
| 24 | red | 64 x 64 | 4.58 KB | 2024-01-02 18:07:24 | [USB Update] | [Publish] |
| 25 | Test | 512 x 256 | 194 KB | 2024-01-20 09:25:32 | [USB Update] | [Publish] |
| 26 | Test 2 | 288 x 96 | 22.9 MB | 2024-01-02 17:48:03 | [USB Update] | [Publish] |
| 27 | Test3 | 64 x 64 | 55.7 KB | 2024-01-09 14:25:33 | [USB Update] | [Publish] |

Terminal Control

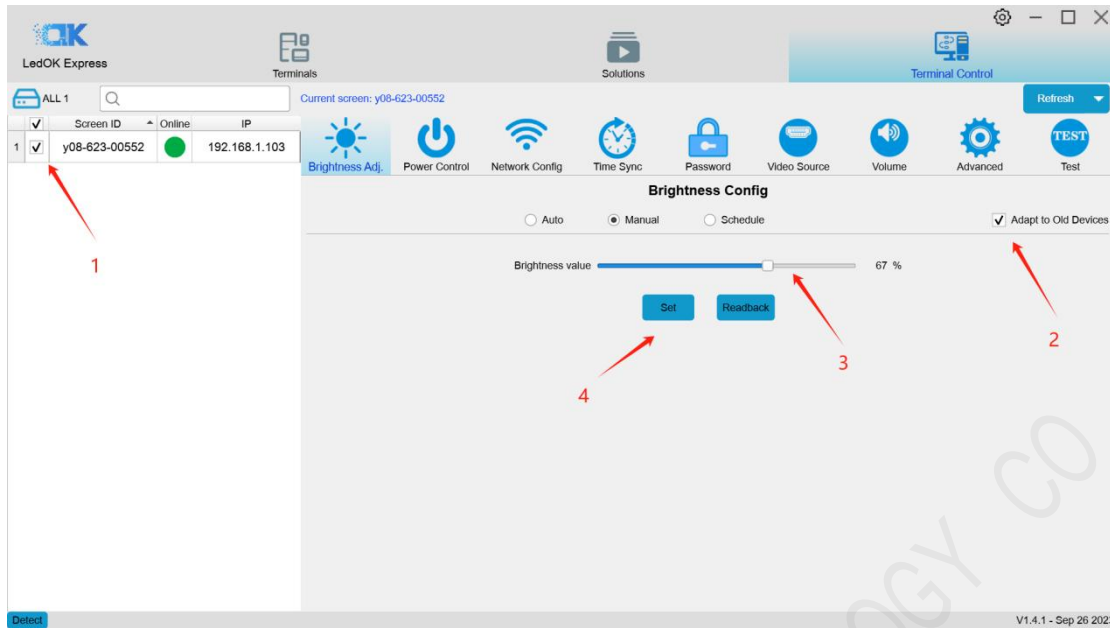
There are totally 9 functions under Terminal Control. Please view the function according to the requests. But for Y12 controller, just need to care about the simple 7 functions.



Brightness Adjust

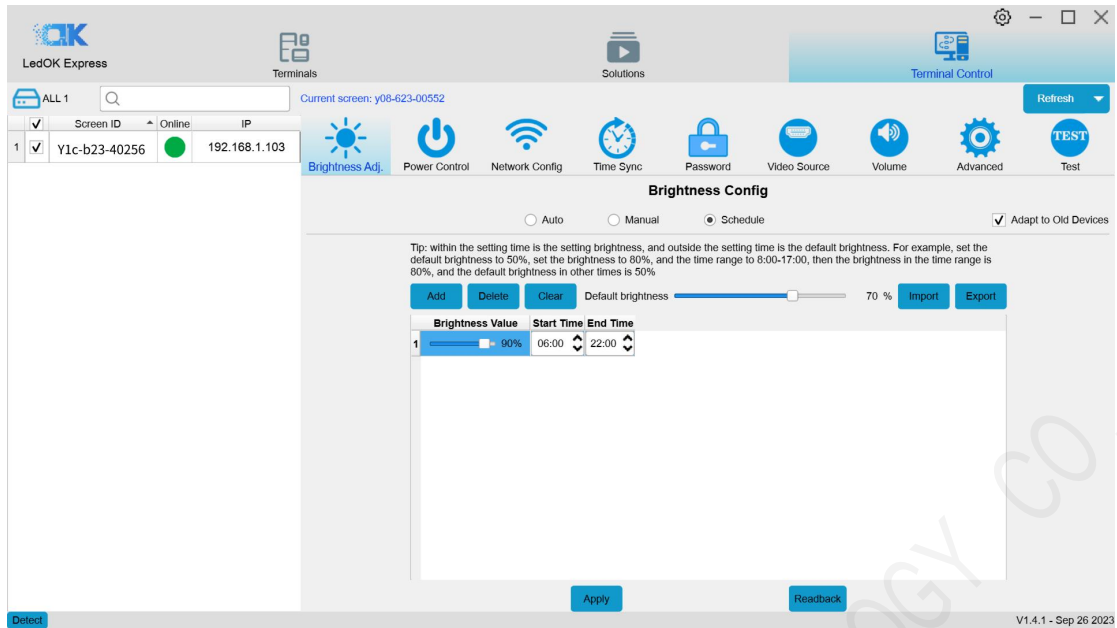
There are three ways to set the brightness of controller:

1. Manual: the range is from 0 to 100%. Check the controller you want to set the brightness on the left side, then check the right side of the adapted old devices, drag the progress bar to set the brightness rate you want, and then click "Set", click the 'Readback' button, you can get the current brightness.



- Schedule: Click "Schedule" to enter the schedule interface, click "Add" to add the schedule brightness task, check 'adapt to the old device', set the brightness and time range as well as the default brightness. The default brightness will only take effect after the timed brightness time is over.

For example, if the default brightness is 70%, the set brightness is 90%, and the time range is 6:00-22:00, then the brightness in the range of 6:00-22:00 will be 90%, and the default brightness will be 70% in other times. Then click "Apply", click "Readback" to view the current timed brightness tasks of the controller.



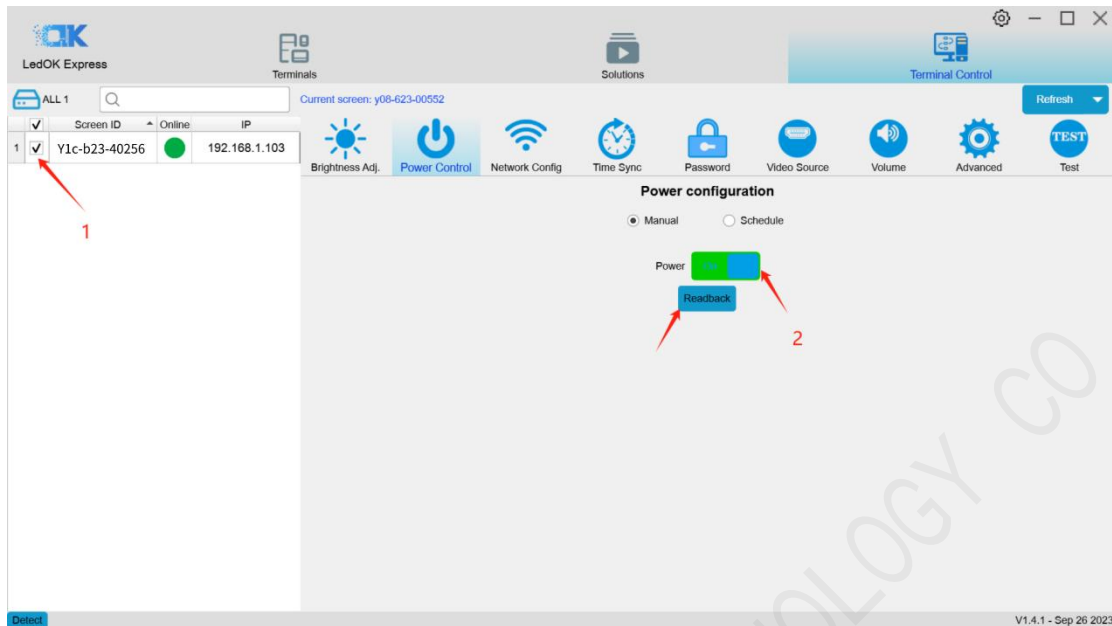
3. Delete schedule task, select the task and click 'Delete', then click 'Apply'. You can also adjust the controller brightness in the 'manual', which will also clear the schedule task of the controller.



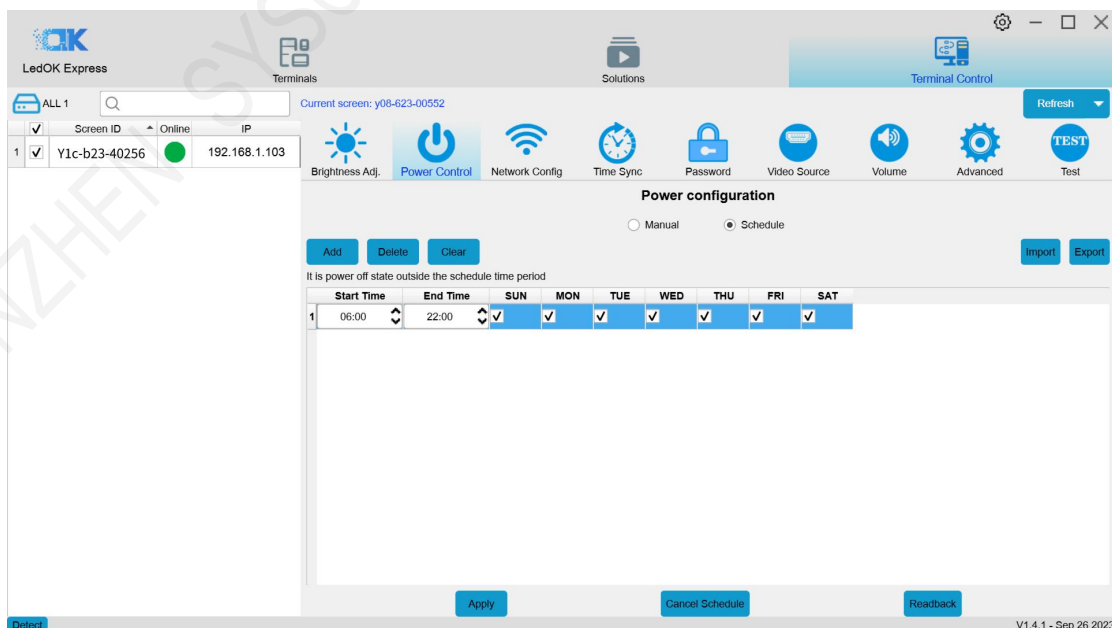
Power Control

There are two ways to set the power switch of the controller: (1) Manual: check the left side of the controller that you want to set the power switch, click on the "Switch" button to set the screen switch, click on the "Readback" button to get the current status of the controller's

on/off screen.



1. Schedule: Click the 'Schedule' button to enter the schedule interface. click 'Add' to set the range of time and week for the controller to switch on and off, and then click to check the controller on the left side of the screen and click "Apply", then you can set up the timer to switch on and off the screen. Click 'Clear' to clear the power on/off schedule set by the controller, and click 'Readback' to check whether the power on/off schedule is set on the controller.

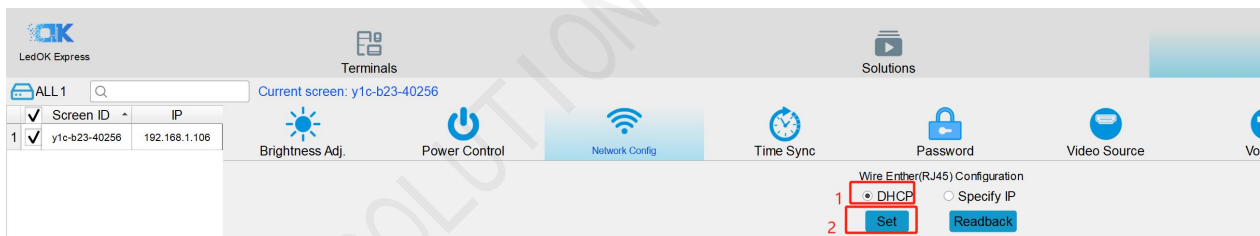
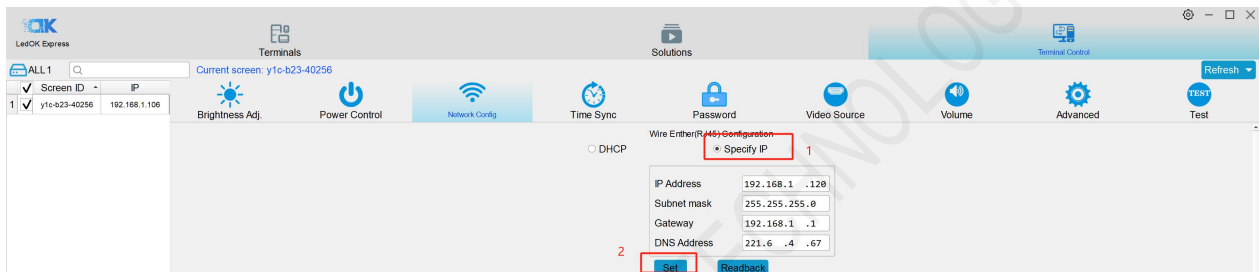


Network Configuration

There are three ways for the controller to access the network, which are Wired Ethernet, WiFi and 4G. Different models of controller according to the application to choose the way to access the network (one of the three options).

Wired Ethernet Configuration

Network configuration, first is Wire, can setup the controller IP address for DHCP or for Specify IP.

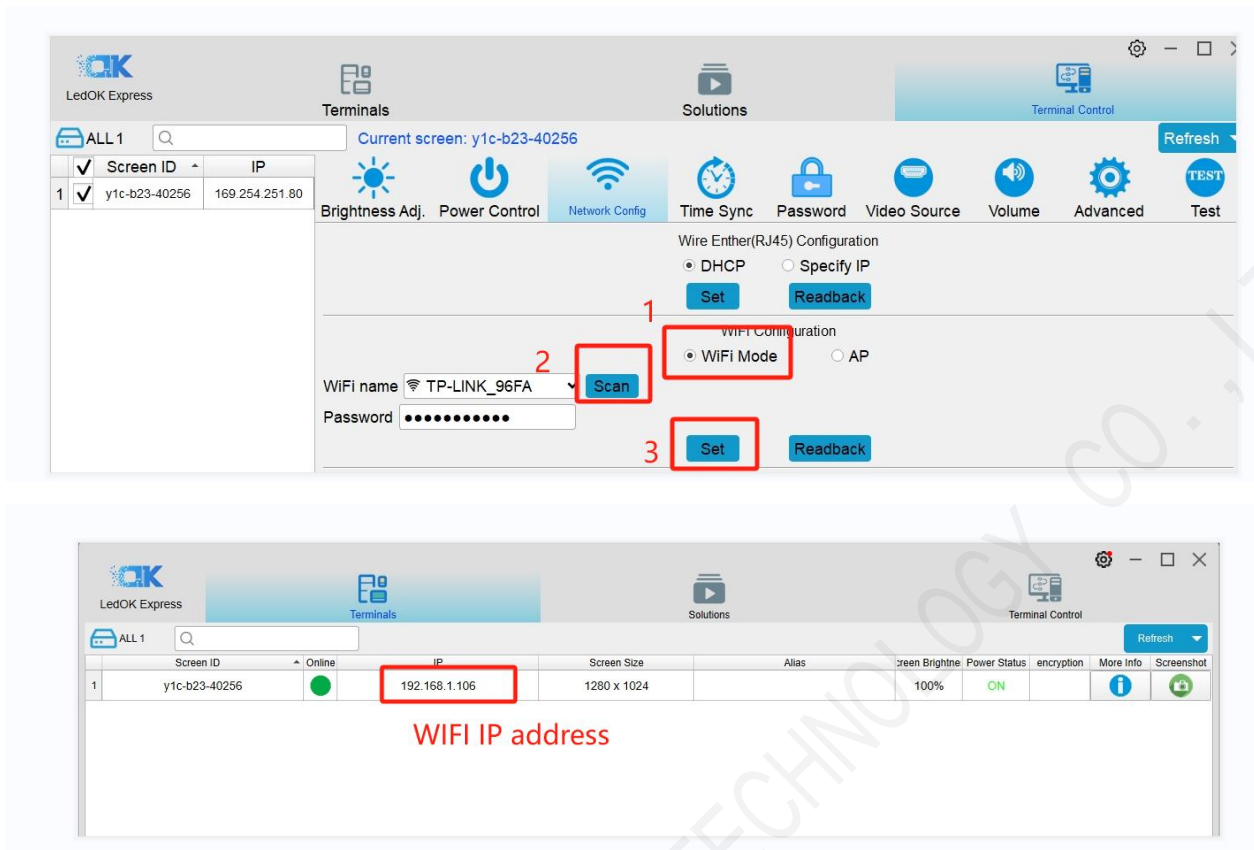


NOTES:

1. Controller will get access to internet by wire as first priority.

WiFi Configuration

When laptop communicates with Y12 via Ethernet cable, enter Network config and choose WiFi config, click "Scan" to scan for available WiFi, Select WiFi and enter the password, then click 'Set'. Then remove the Ethernet cable from Y12, then after 3 mins, the controller will auto accessing to the WiFi success.



When laptop communicates with Y12 via hotspot, enter Network config and choose WIFI config, click "Scan" to scan for available WiFi, Select WiFi and enter the password, then click 'Set' , then power reboot the Y12 then will auto accessing to the WIFI success after run up again.

NOTES:

If there is a network cable connecting the controller at this time, need to unplug the cable.

Q&A for WIFI setup:

1. If could not scanning the WiFi, please try to turn on/turn off Software or WiFi Switch.
2. If controller can't get access to internet through WiFi, please double check the steps below:

- A. WiFi antenna plug correctly.
- B. WiFi password is correct or not.

- C. If the Wireless router being accessed too many terminals?
- D. E series controller switch on WIFI mode?
- E. Try another WIFI hot spot.
- F. Y/M series controller, please make sure the LAN cable removed.

4G Setup

Check 'Enable Cellular Data' and select the country code MMC through the drop-down frame. Select 'carrier name' to get the APN information, and the specific identification of the carrier is shown in Figure 2; if you can't find the carrier, you can manually input the carrier information and APN information.

Click 'Set', after success, wait for about 3 minutes for the controller to automatically unplug the 4G network into the network; observe the 'internet' light of the controller flashing evenly and slowly, that is to say, it has been accessed to the cloud platform.

If the 'internet' light does not flash, check whether the APN is set correctly. If there is no error, you can reboot the controller and wait for it to go online.

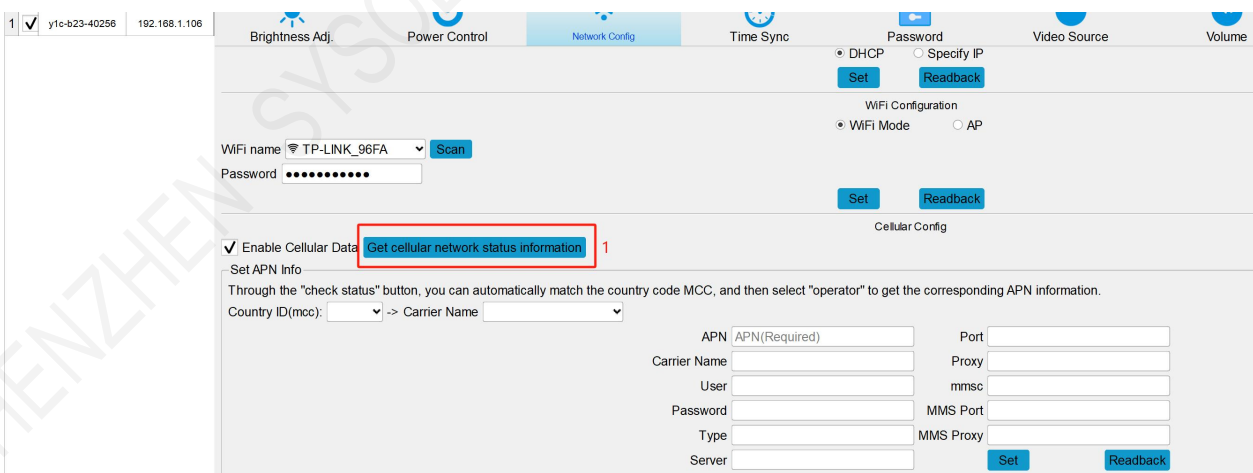


Figure 1

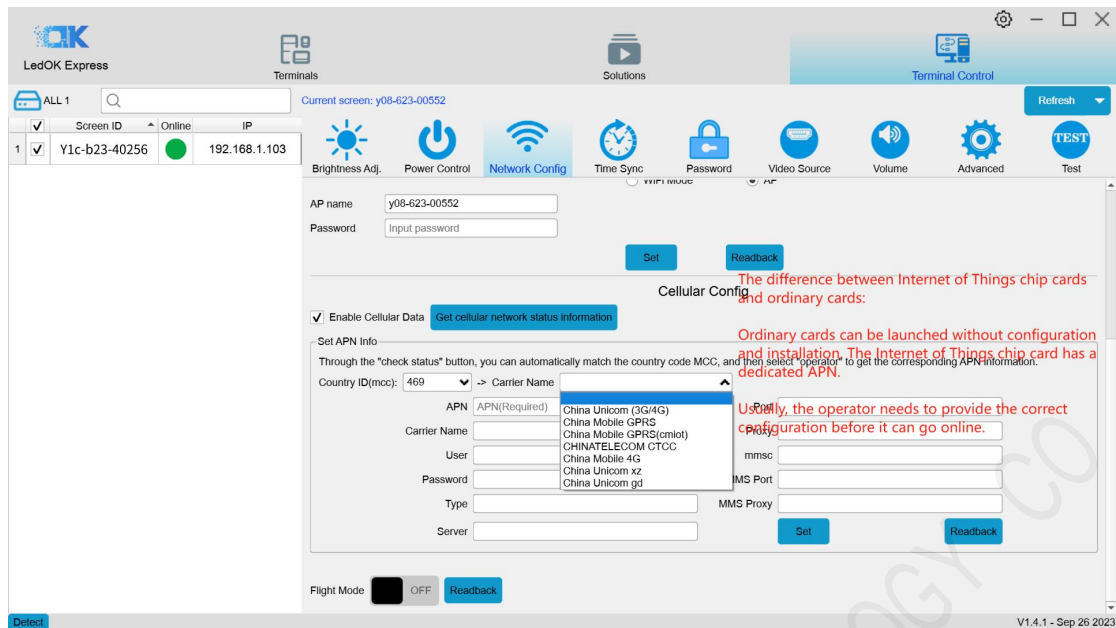


Figure 2

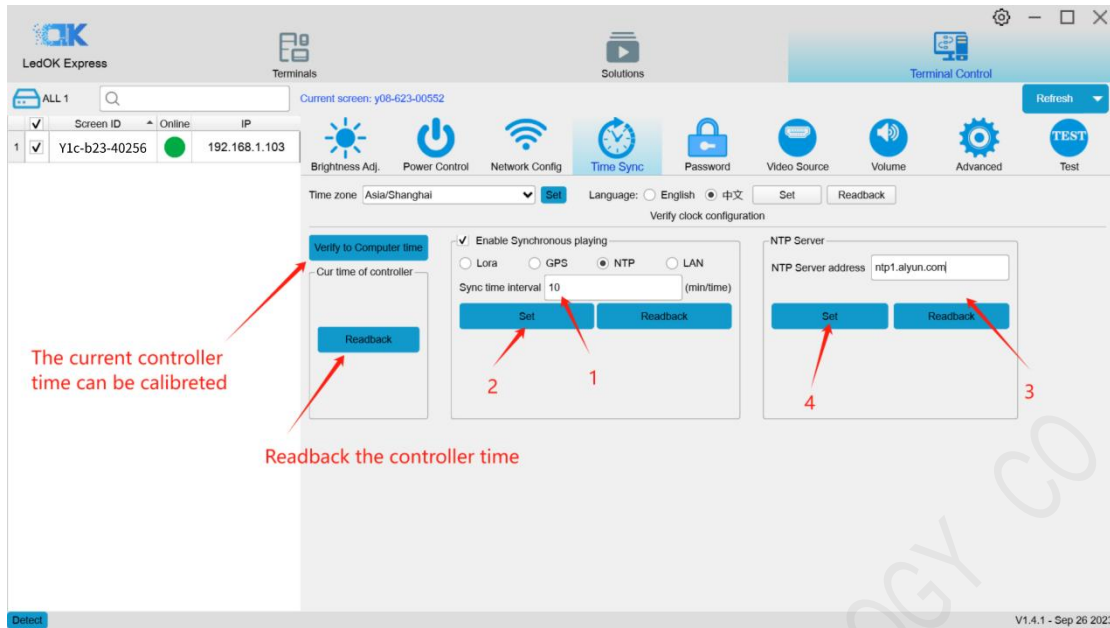
NOTES:

If controller can't get online success, please checking following things:

- 4G antenna has plugged correctly?
- Y/M series controller, make sure the LAN cable removed.
- APN is correct or not? (Consult the 4G SIM operator)
- SIM card has activate? SIM card has enough money and 4Gdata service?

Time Sync

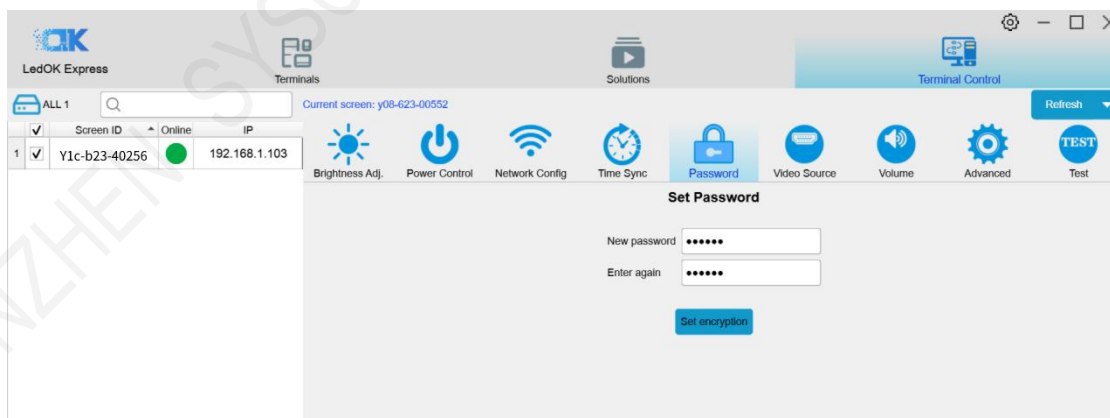
It is used for synchronized playback of the controller, after setting, the controller will automatically calibrate the time to synchronize the playback of the program screen. Click NTP, set the synchronization interval, click 'Set', then set the NTP server, the default server of the controller is: ntp1.aliyun.com, click 'Set'.

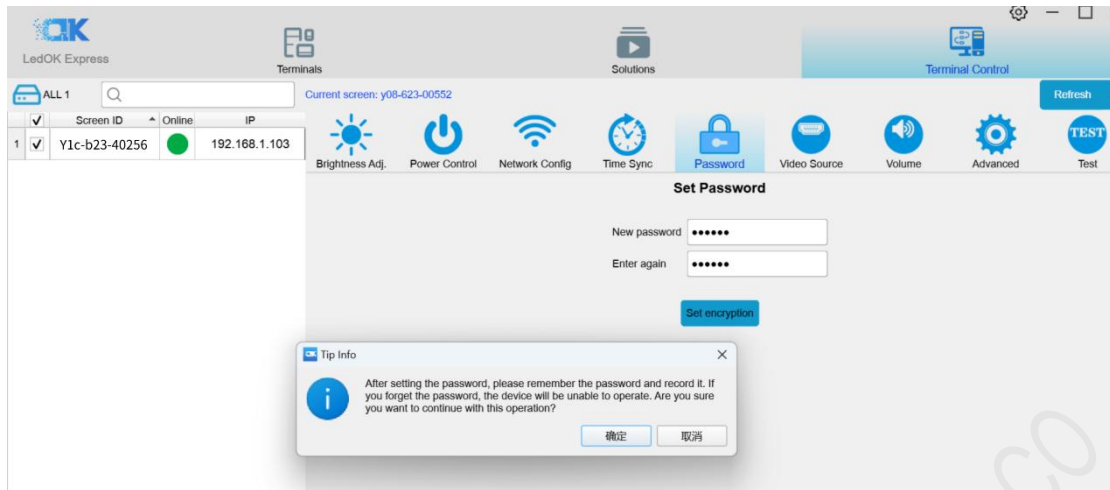


Set Password

Demonstration of the encryption configuration function

Enter a new password for encrypted configuration (free setting, must be memorized!!!) , below enter the password to keep the same with the new password. After entering the encryption password, check the screen you need to control in the left navigation bar, click Encryption, a pop-up message prompt will appear, click OK, encryption is successful, a pop-up message prompts the successful execution of the encryption operation.

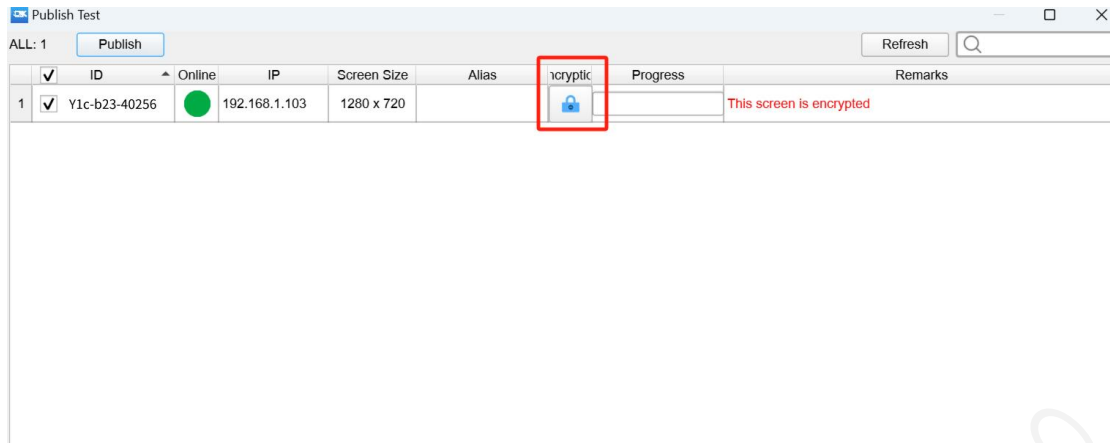




After finishing the above operations, click Solution Management to enter the interface for program publishing: select a program and click Publish.

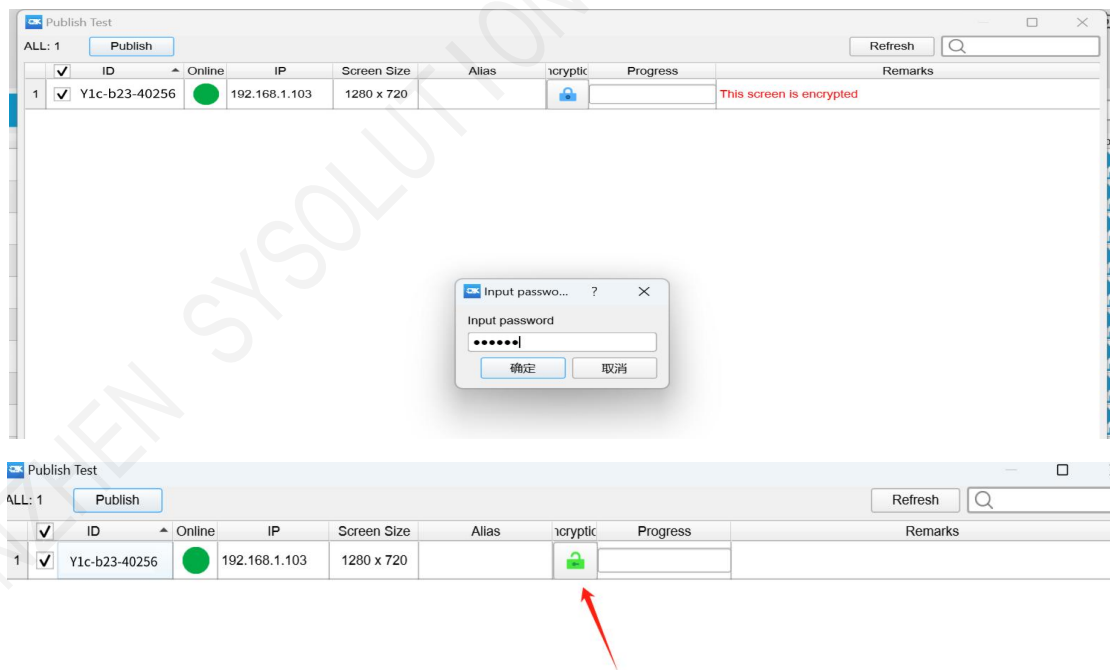
| | Name | Resolution | File Size | Last Modified | USB Update | Publish |
|----|-------------------|------------|-----------|---------------------|------------|---------|
| 13 | 20231213171452596 | 64 x 64 | 747 B | 2023-12-13 17:15:27 | | |
| 14 | 20231227142447610 | 512 x 256 | 205 B | 2023-12-27 14:27:08 | | |
| 15 | 20231227165114370 | 512 x 256 | 207 B | 2024-01-20 09:26:34 | | |
| 16 | 20231227165213163 | 512 x 256 | 205 B | 2023-12-27 16:52:34 | | |
| 17 | 20231228154654879 | 512 x 256 | 656 B | 2023-12-28 15:48:00 | | |
| 18 | 20231228154826278 | 512 x 256 | 656 B | 2023-12-28 15:48:51 | | |
| 19 | 20231228154951664 | 512 x 256 | 656 B | 2023-12-28 15:50:23 | | |
| 20 | 20240102174831590 | 64 x 64 | 134 KB | 2024-01-02 17:49:18 | | |
| 21 | 20240102174920344 | 64 x 64 | 135 KB | 2024-01-02 17:49:47 | | |
| 22 | 22222 | 288 x 96 | 22.9 MB | 2023-12-15 12:18:48 | | |
| 23 | green | 64 x 64 | 16 KB | 2024-01-02 18:06:48 | | |
| 24 | red | 64 x 64 | 4.58 KB | 2024-01-02 18:07:24 | | |
| 25 | Test | 512 x 256 | 194 KB | 2024-01-20 09:25:32 | | |
| 26 | Test 2 | 288 x 96 | 22.9 MB | 2024-01-02 17:48:03 | | |

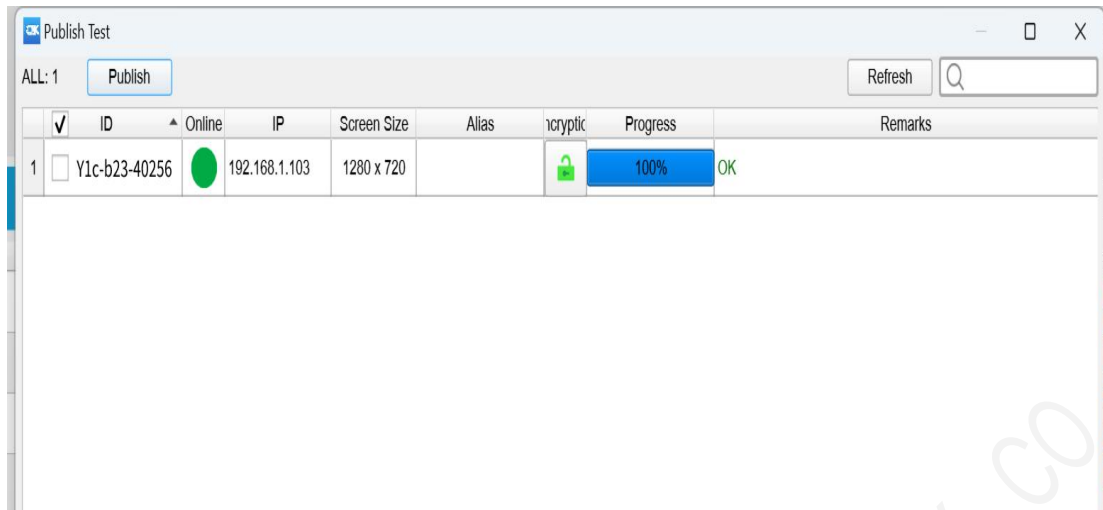
You can see that the interface has a more encrypted logo, then continue to check the screen and then click on the lower right corner of the release button, in the progress column will appear screen has been encrypted this tip, at this time the program can not be published.



Encrypted method of publishing programs on screen

Method 1: Take the above operation, click on the encryption logo (lock icon), a pop-up window prompts for a password, which is the password configured in the previous encryption configuration. Enter the password and click OK, the lock of the encryption logo will be unlocked. At this time, then check the screen and click the lower right corner of the release can be published successfully.

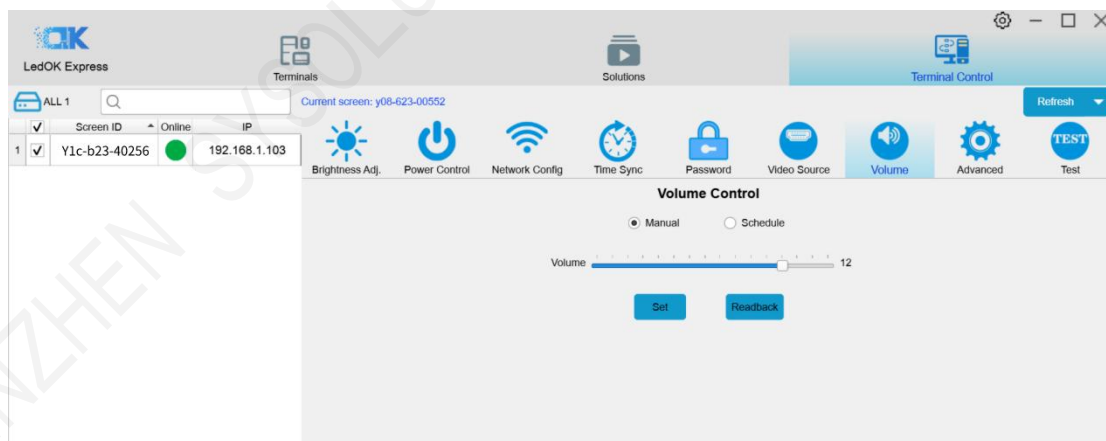




Method 2: Re-enter the terminal control interface to select the encryption configuration function, enter the password of the previous encryption configuration, cancel the encryption, and then you can publish the program normally.

Volume Adjustment

There are two ways to adjust the volume: (1) manually: the range is from 0 to 15. drag to set the desired value, and then click on "Settings", click on the "Readback" button, you can get the current volume value.

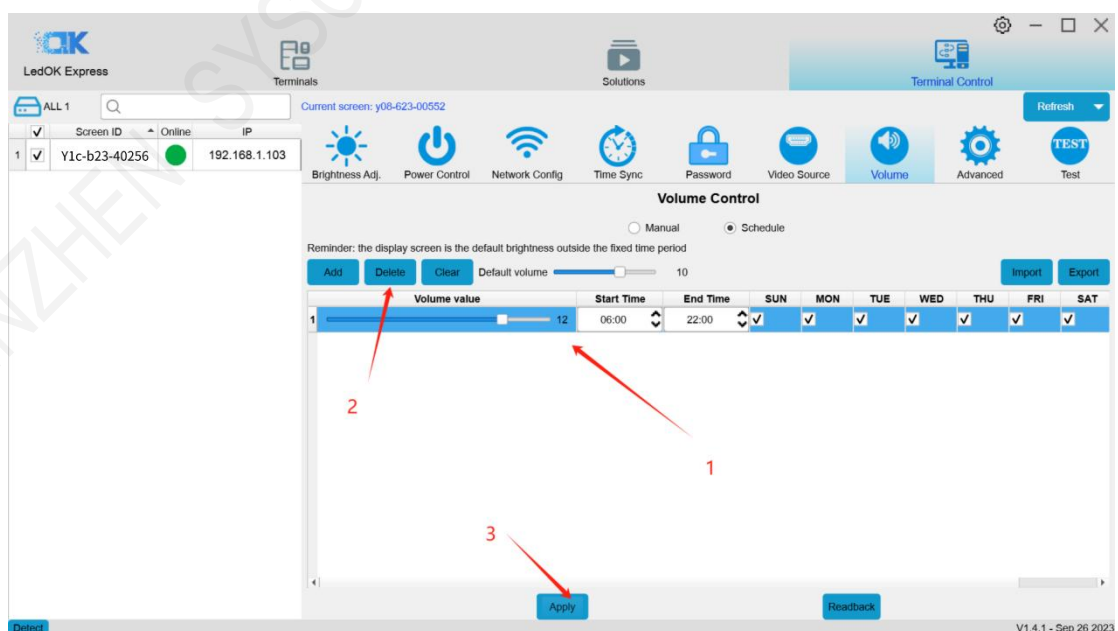


Schedule: Click 'Schedule' to enter the Schedule interface. Click 'Add' to add a timed volume task. Set the volume, time range and default volume. The default volume will only take effect after the timed volume time is over. For example, if the default volume is 10, set the

volume to 12, and the time range is 6:00-22:00, then the volume will be 12 in the range of 6:00-22:00, and the default volume will be 10 in the other time, and then click "Apply", and then click 'Readback' . Click 'Apply' , and then click 'Readback' to view the current timed brightness task of the controller.

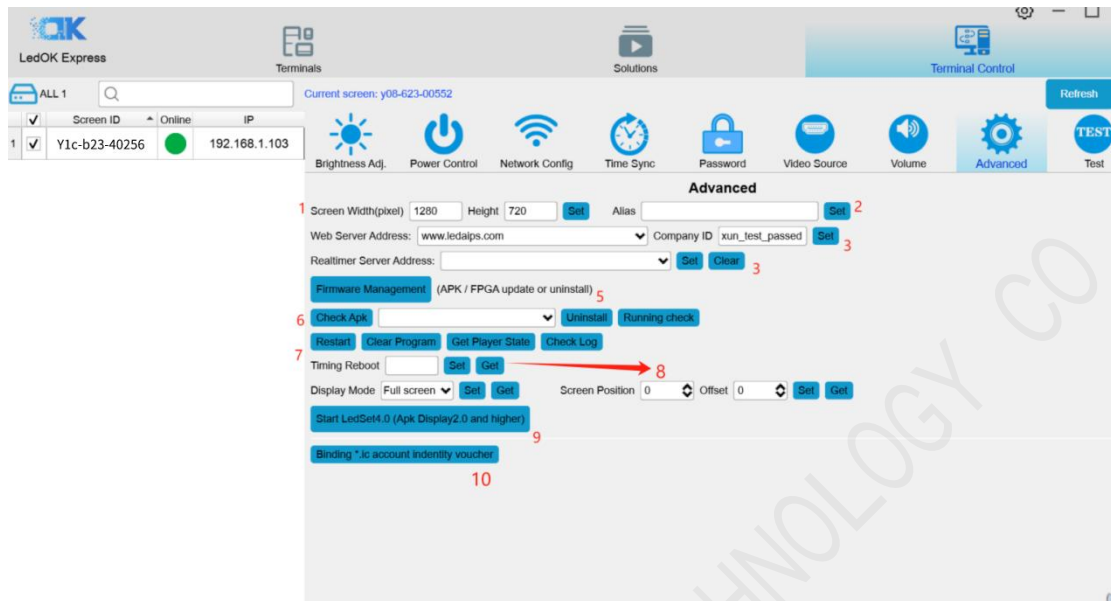


To delete a timed volume task, select the task and click 'Delete' , then click 'Apply' to delete the timed task. You can also adjust the controller volume in the manual interface, which will also clear the timed volume task for the controller.



Advanced

Advanced password: 888



- ① Setup Led Screen Width And Height: Input the LED screen width and height parameters and then click on the setup prompt success can be.
- ② Setting the controller alias
- ③ Set AIPS2.0 cloud platform: drop down to select the AIPS cloud platform address: www.ledaips.com.
- ④ Enter the company ID registered in the platform, click on the setup prompts success can be.
- ⑤ Setting the address of AIPS 4.0 Intelligent IOT platform or the address of the customer's own platform
- ⑥ Can uninstall and upgrade the controller software, please consult our technology to get the corresponding installation package and operating documents, please do not change privately.
- ⑦ Query the software version installed on the controller.

- ⑧ Restart the controller system
- ⑨ clear the program being played
- ⑩ LEDSET4.0 software, used to configuring the LED screen display parameters, please contact our technical cooperation debugging.
- ⑪ binding Vehicle HUB platform

Please visit the Link in below for how to bind led controller to Vehicle HUB Platform:

<https://drive.google.com/file/d/1HynnUH7pnsluK7towG3mTsGzGPm-v59m/view>

Chapter V Publish New Content by Cloud Platform

Please click the link in the below to get the Instructions of Publish New Content by AIPS2.0

Platform:

https://drive.google.com/file/d/1pJPDPQnyJCewq37F_kTXx3iKq_FY4ksH/view

Please click the link in the below to get the Instructions of Publish New Content by Vehicle

HUB Platform

<https://drive.google.com/file/d/1jpC294j6xfuMM7qU6-iUOyKyGu97u2tt/view>

Please click the link in the below to get the Instructions of Publish New Content by LEDOK IOT

4.0 Platform:

https://drive.google.com/file/d/1KN18GxQ_sFFSIBe8cgRdHSZI3n-Uuqbt/view