



Shenzhen Mooncell Electronics Co., Ltd

2IN1 Controller MC75E Specifications

Contents

<i>Product Overview</i>	1
<i>Introduction to MC75E:</i>	1
<i>Product Features</i>	1
<i>Application Scenarios</i>	1
<i>Introduction to its Functions</i>	2
<i>Performances</i>	2
<i>Audio and Video Performance</i>	2
<i>Terminal Management</i>	3
<i>Product Parameters</i>	4
<i>Basic Parameters</i>	4
<i>Hardware Interface</i>	5
<i>Product Specifications</i>	8
<i>Basic Specifications</i>	8

MC75E Control Card

Product Overview

Introduction to MC75E:

MC75E control card adopts high-performance 4-core CPU+GPU chip-set and integrates sending and receiving card as one, it has 8x HUB75E interfaces, it could support the maximum 16 sets of RGB parallel connection data, it supports video, picture, text and other multimedia playback, with high cost performance.

Product Features

- *Support Android7.1 system*
- *PC, Mobile Phones and Tablets are supported to be used to control and manage with the programs and its parameters*
- *it supports cloud cluster control management. You don't have to be on site to configure your screen.*
- *It supports to have multiple displays to work simultaneously (synchronized).*
- *Support Ethernet Interface*
- *Support WIFI/HOTSPOT*
- *Low power consumption, small size, easy installation, stable and reliable performance*

Application Scenarios

It could be widely used at business display area(fields) such as : Fixed Installation LED Display, Intelligent Lamppost Led Display, Over-door Led Display, Vehicle-Mounted Led Display, Chain Stores Cluster Display Management, Led Electronic Whiteboard, Led Mirror(Mirror-like Led Display), Advertise Led Display, and the Led Display that does not need to be used with the PC(Offline Mode).

Add: 1-3 Floor, Building#12, Third Industrial Zone, LuoZu Community, Shiyan Street, Baoan

District, Shenzhen, PRC.

Tel#: 0755-23975634 29095400

Website: www.mooncell.com.cn

Introduction to its Functions

Performances

- ◆ *It supports HD videos, Pictures (Images), TXT, Weather Info, Clock and a variety of programs.*
- ◆ *It supports to have the multiple windows, the size & position of the windows could be set as you wish and the window overlay is supported.*
- ◆ *LAN, WIFI, 4G, etc. are supported.*
- ◆ *Applications for Android and IOS are available.*
- ◆ *PC, Mobile Phones and Pad are supported to be used to control and manage with the programs and its parameters.*
- ◆ *The RS485 Sensor Interface could be supported to monitor the temperature, humidity, lightness and some other environmental situations (parameters).*
- ◆ *The brightness of the led display could be automatically/Manually adjusted.*
- ◆ *Using the Network Time Protocol (NTP) to synchronize the Time (To get the accurate Time).*
- ◆ *It supports to have multiple displays to work simultaneously (synchronized).*
- ◆ *It supports to use the USB Flash disk to update the programs, plug and play.*
- ◆ *It supports to play the programs as in "player list" orders*
- ◆ *It supports remote switch the screen on/off via the relay switch.*
- ◆ *it supports cloud cluster control management*

Audio and Video Performance

<i>Programs Partition</i>	<i>The Programs Windows could be partitioned as you wish, and the same with the superposed windows.</i>
<i>Video Format</i>	<i>AVI, WMV, MPG, RM/RMVB, MOV, DAT, VO B, MP4, FLV, etc.</i>
<i>Audio Format</i>	<i>MPEG-1 Layer III, AAC, etc.</i>
<i>Image Format</i>	<i>BMP, JPG, PNG, etc.</i>
<i>TXT Display</i>	<i>Single-Line TXT, Static TXT, Multi-Line TXT</i>
<i>Image Partition</i>	<i>It supports Video, Image, Scrolling Caption, LOGO, Data and Time; the images could be partitioned as you wish.</i>
<i>OSD Supported</i>	<i>It supports 32bit True Color OSD, it could</i>

Add: 1-3 Floor, Building#12, Third Industrial Zone, LuoZu Community, Shiyan Street, Baoan District, Shenzhen, PRC.

Tel#: 0755-23975634 29095400

Website: www.mooncell.com.cn

	<i>be displayed at any position, it supports the video ,image and TXT to be played together at the same time, the image or TXT could be superposed on the videos, it supports transparent,semi-transparent,opaque effects.</i>
<i>RTC(Real Time Clock)</i>	<i>Real Time Clock Display and Management</i>

Terminal Management

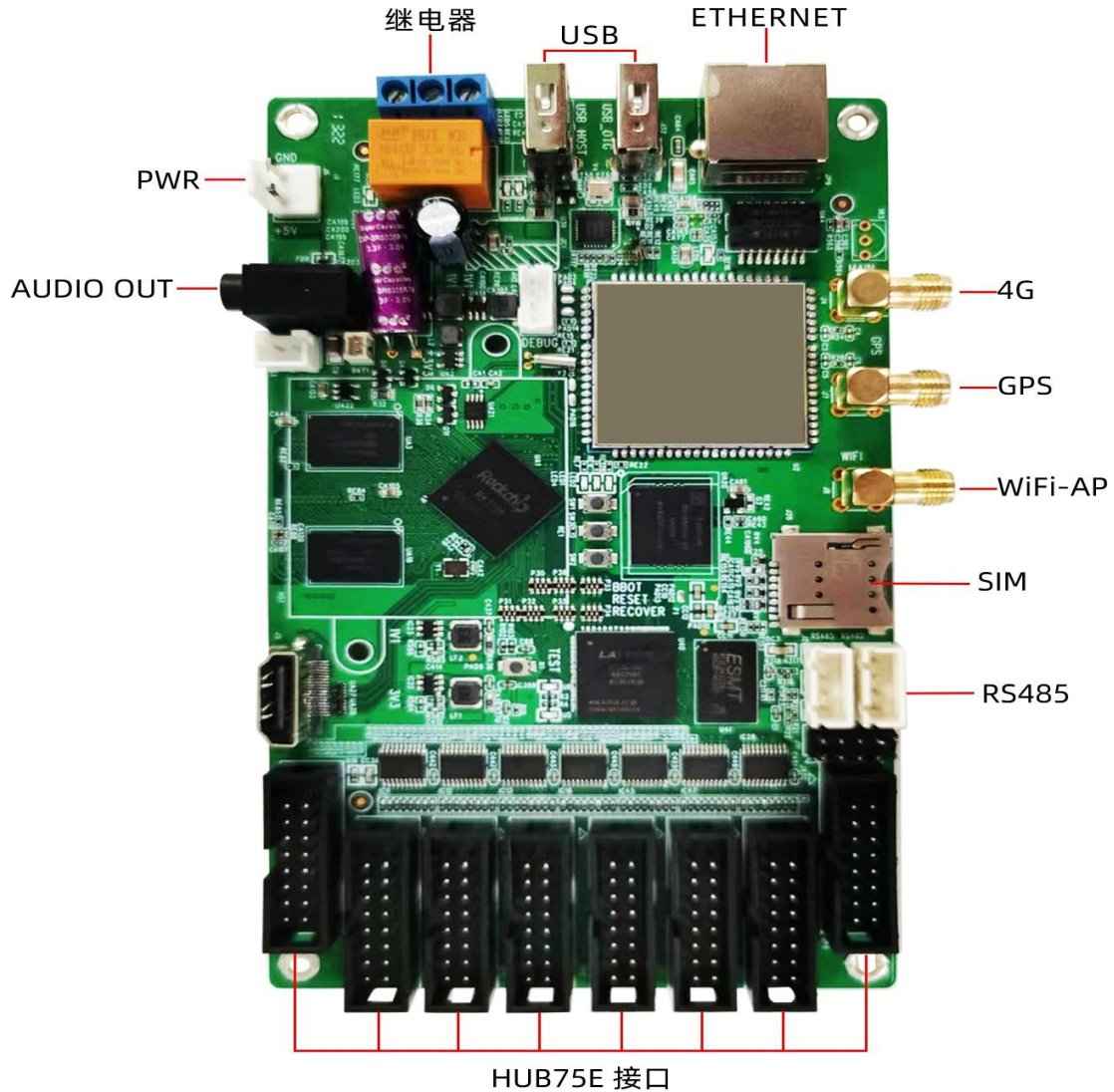
<i>Network Communication</i>	<i>LAN/WIFI/4G</i>
<i>Programs Update</i>	<i>USB Flash Disk Plug and Play,Terminal Ethernet Management</i>
<i>Device Management</i>	<i>PC,Android,IOS and some other Smart Terminal Devices</i>
<i>Wireless Control</i>	<i>Brightness Real Time Adjustment,On/Off Display,System Parameters Settings,Programs Play Management,Wireless Sending the Programs</i>
<i>Brightness Automatically Adjustment</i>	<i>The brightness could be automatically adjusted based on the real time environmental situations or the set schedules.</i>
<i>Fixed(Set) Time Playing/Timing Playing</i>	<i>To play the programs as in “player list”orders.</i>
<i>Timing Switch On/Off</i>	<i>Through the Management System to get the centralized setting.</i>
<i>Management Software</i>	<i>The Application is supported to be used on any Android or IOS devices.</i>

Product Parameters

Basic Parameters

<i>Performances</i>	<i>Processor : 4-Core CPU + GPU</i> <i>Memory : 1G DDR3</i> <i>Flash Memory : 8G EMMC</i> <i>Medias Supported: support video, picture, text playback</i>
<i>Network access method</i>	<i>LAN, WIFI AP, 4G Module</i>
<i>Processing Ability</i>	<i>The maximum loading capacity: 190 thousand pixels</i> <i>Widest: 1920 pixels , Highest: 1080 pixels</i>

Hardware Interface



Interface Illustration

<i>Name</i>	<i>Illustration</i>
<i>PWR</i>	<i>5V power interface, 4P-2.54MM socket</i>
<i>AUDIO OUT</i>	<i>Audio output interface, 1/8" (3.5mm) TRS plug</i>
<i>ETHERNET</i>	<i>Ethernet interface</i>
<i>USB</i>	<i>USB2.0*2, can be connected to external U disk storage or other devices</i>
<i>WiFi-AP</i>	<i>WiFi AP Antenna Interface</i>
<i>GPS antenna</i>	<i>GPS antenna interface, optional</i>
<i>4G antenna</i>	<i>4G antenna interface, optional</i>

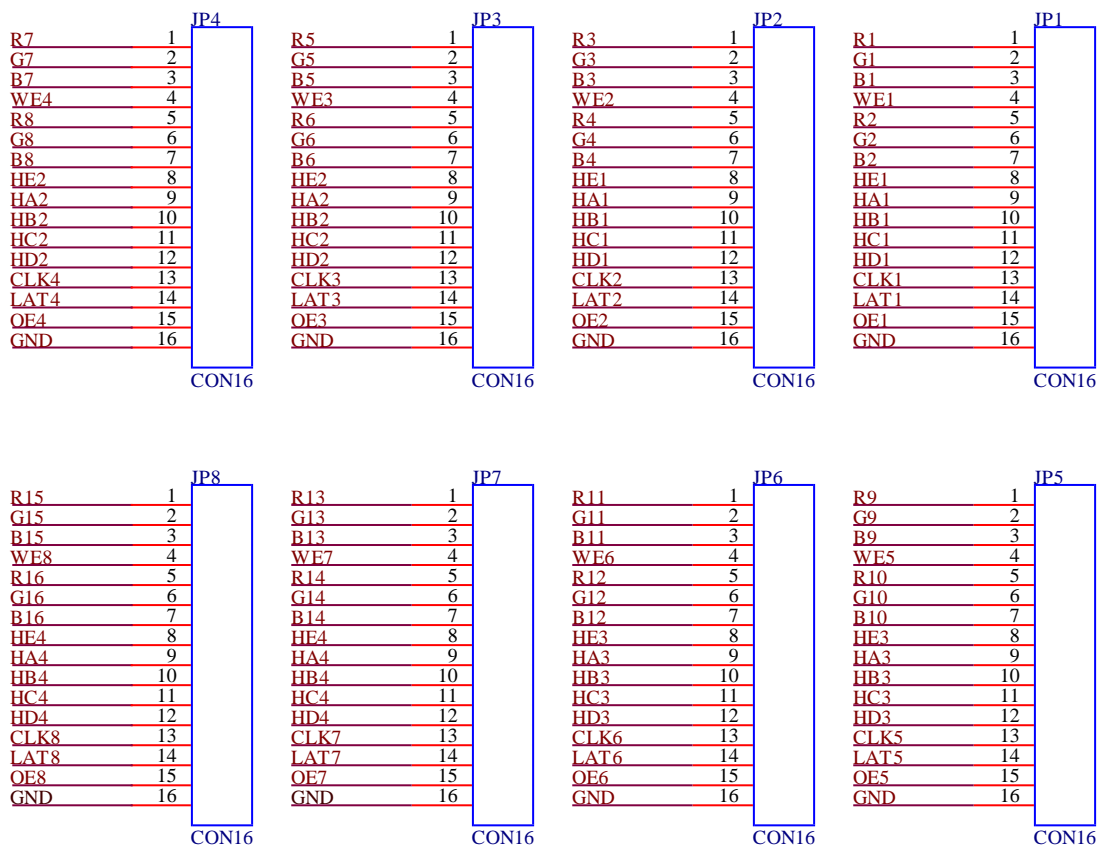
Add:1-3 Floor,Building#12,Third Industrial Zone,Luozu Community,Shiyan Street,Baoan District,Shenzhen,PRC.

Tel#: 0755-23975634 29095400

Website: www.mooncell.com.cn

<i>SIM card slot</i>	<i>Support 4G Micro sim card, select 4G module according to the actual network.</i>
<i>RS485</i>	<i>4P-2.54MM connector, can be connected to external brightness sensor</i>
<i>HUB75E Interface</i>	<i>8x HUB75E interfaces , to be connected to the led screen</i>
<i>3PIN relay switch</i>	<i>Control DC switch, maximum voltage 30V, maximum current 3A</i>

16 Sets of Parallel Connection Data PIN Definition



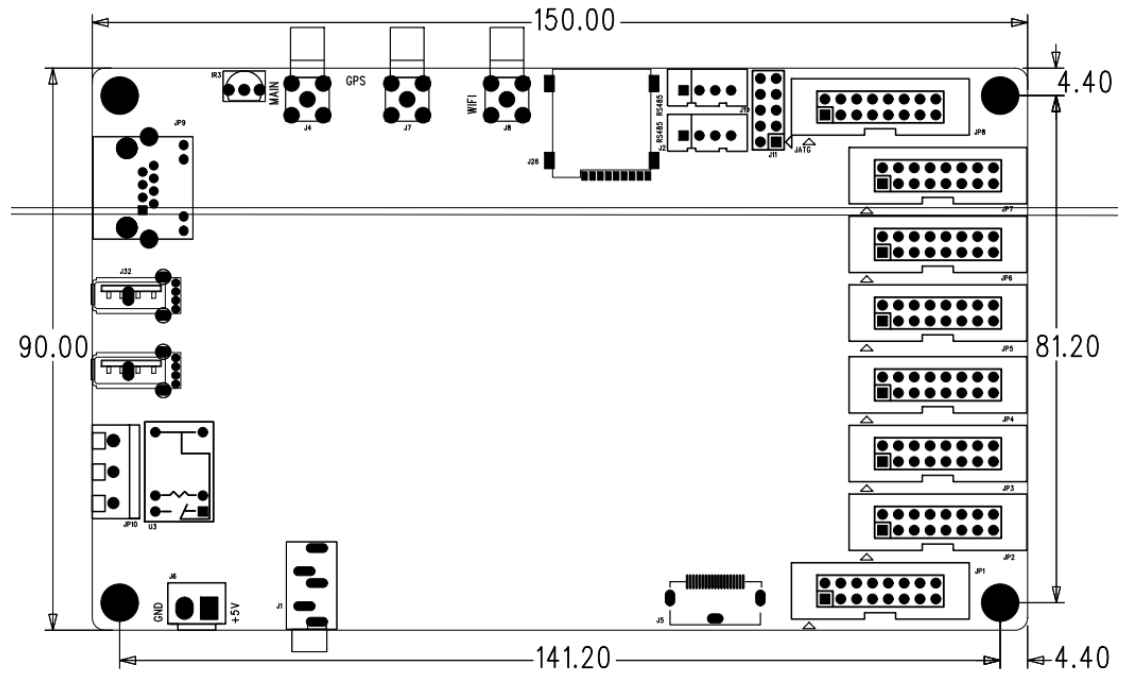
JP1—JP8 Definition

<i>PIN#</i>	<i>1</i>	<i>3</i>	<i>5</i>	<i>7</i>	<i>9</i>	<i>11</i>	<i>13</i>	<i>15</i>
<i>Definition</i>	<i>R0</i>	<i>B0</i>	<i>R1</i>	<i>B1</i>	<i>A</i>	<i>C</i>	<i>CLK</i>	<i>OE</i>
<i>PIN#</i>	<i>2</i>	<i>4</i>	<i>6</i>	<i>8</i>	<i>10</i>	<i>12</i>	<i>14</i>	<i>16</i>
<i>Definition</i>	<i>G0</i>	<i>GND</i>	<i>G1</i>	<i>E</i>	<i>B</i>	<i>D</i>	<i>LAT</i>	<i>GND</i>

Add: 1-3 Floor, Building#12, Third Industrial Zone, LuoZu Community, Shiyan Street, Baoan District, Shenzhen, PRC.

Tel#: 0755-23975634 29095400 **Website:** www.mooncell.com.cn

Product Dimensions(Unit: mm)



Product Specifications

<i>Basic Specifications</i>		
<i>Electronic Parameters</i>	<i>Input voltage</i>	5V
	<i>Rated power consumption</i>	15W
<i>Working Environment</i>	<i>Operating temperature</i>	-20 °C~70 °C
	<i>Operating humidity</i>	0RH-85%RH, no condensation
<i>Packaging Information</i>	<i>Carton + bubble bag</i>	
<i>Power</i>	<i>Input voltage: DC 5V/3A</i>	
<i>Product Dimensions</i>	<i>150mm X 100mm X 20mm</i>	
<i>Product Weight</i>	<i>120g</i>	
<i>Accessories List</i>	<i>1xMB75E , 1xWIFI antenna</i>	