

# Mini910

V1.1  
Oct2018

## 1.Features

Mini910 is a high-end and full-featured ultra-small size mini-receiver card. Compared with traditional receiver, Mini910 uses high-density BTB connector. It is more flexible and it adapts to a variety of electronic circuit structure, achieving a card suitable for all applications, which will considerably reduce the types of purchasing receiver card.

The system, specific circuits and program design of Mini910, can effectively help products easily pass through the EMC test. Specific features are as follows:

1. Supports 32 sets of parallel RGB data output;
2. Supports 64 sets of serial data output;
3. Supports saving calibrating data on receiver;
4. Realizes high refresh and high gray level effect;
5. Supports general driver IC and PWM IC;

Official website: [www.linsn.com](http://www.linsn.com)

Add: Floor 15&16, Jiajiahao Business Building, No. 10168, Shennan Blvd,  
Nanshan District, Shenzhen

Tel: +86-0755-86183590/ 4008836968

6. Supports any type of scan within 32 scan, and supports 595 and other serial decoding scan;

7. Supports brightness and color pixel-by-pixel calibration;

8. Maximum supports 512X512 pixels;

9. Supports 12-bit HDMI colors input (requires the 9<sup>th</sup> generation sending card) ;

10. Use 18-bit signal processor, maximum supporting 18-bit (260,000) greyscale (each of red, green and blue) ;

11. Supports single-card color space conversion;

12. Supports configuration file read back;

13. Support network cable BER test;

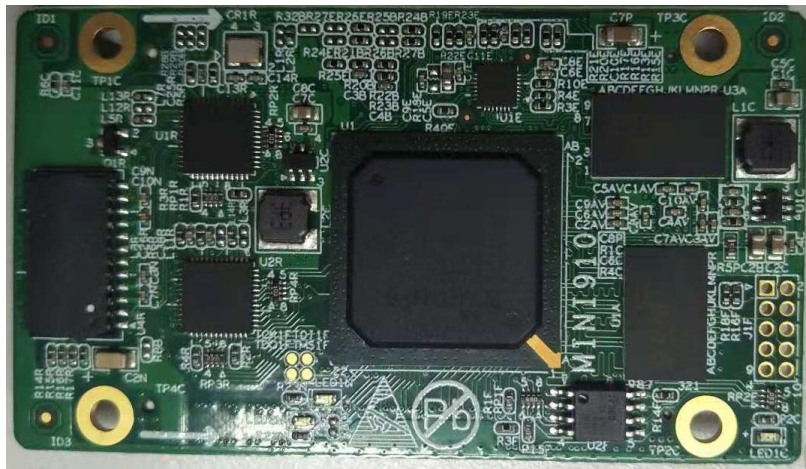
14. Supports hot backup with dual receiver cards, dual power supply, etc.;

15. Supports saving calibration data to Flash on module;

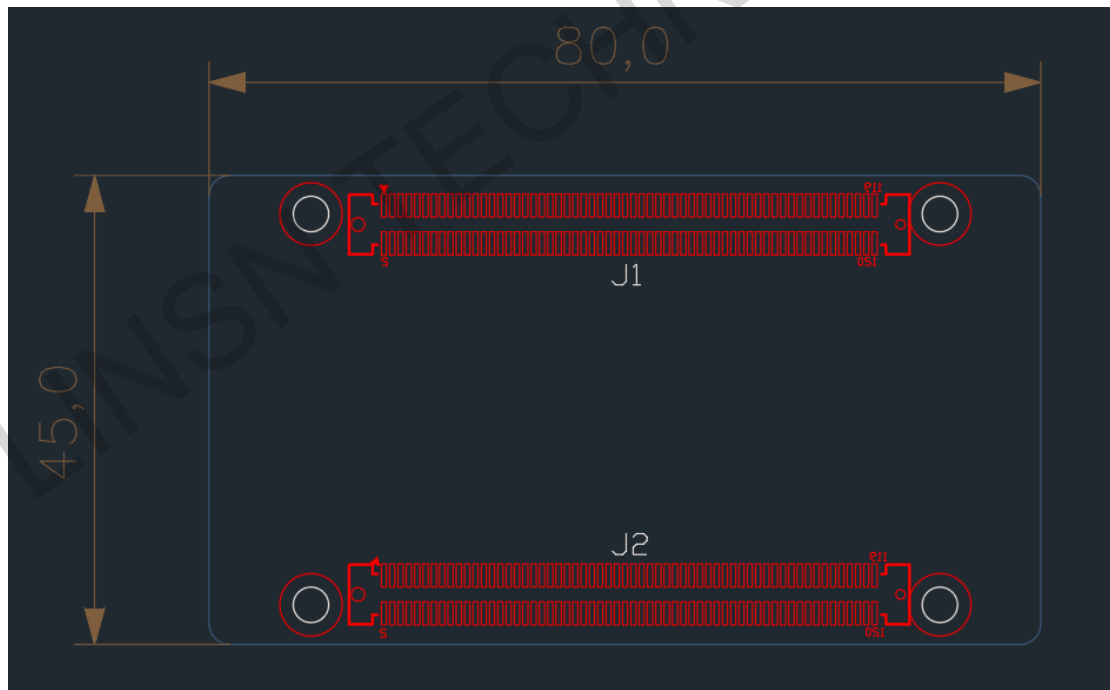
16. RoHS compliant;

17. CE-EMC compliant.

## 2.Appearance



## 3. Dimensions

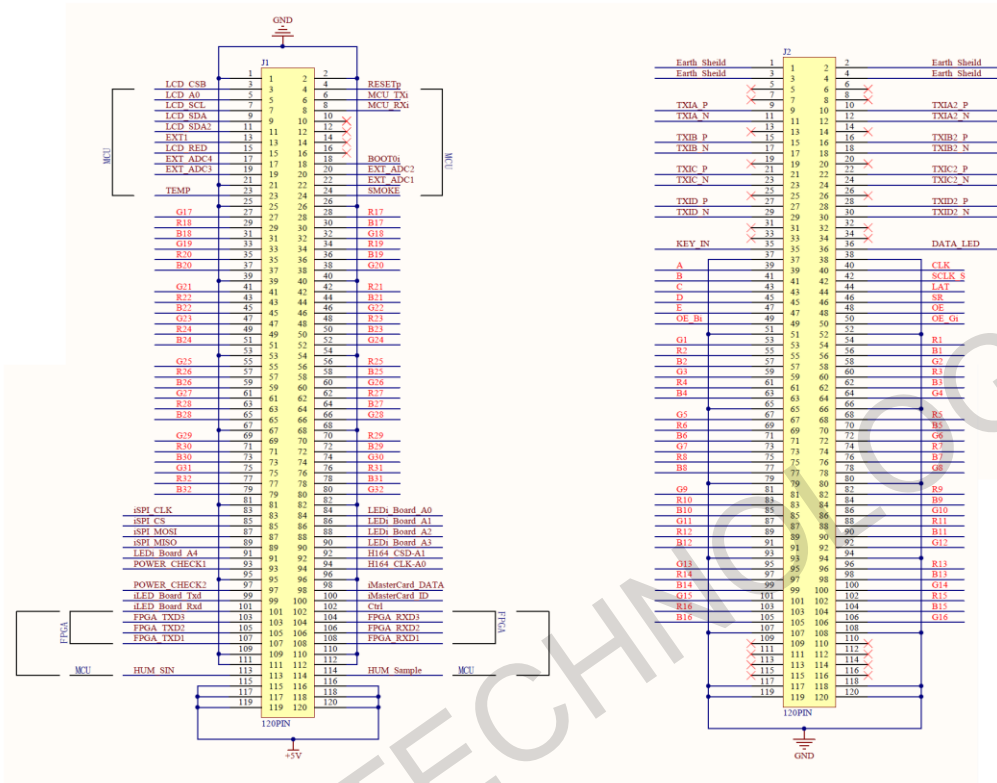


Official website: [www.linsn.com](http://www.linsn.com)

Add: Floor 15&16, Jiajahao Business Building, No. 10168, Shennan Blvd,  
Nanshan District, Shenzhen

Tel: +86-0755-86183590/ 4008836968

## 4. Pinout



Definition for 32 sets of parallel data outputs

Official website: [www.linsn.com](http://www.linsn.com)

Add: Floor 15&16, Jiayahao Business Building, No. 10168, Shennan Blvd,  
Nanshan District, Shenzhen

Tel: +86-0755-86183590/ 4008836968

**Definition for connector1:**

	GND	1	2	GND	
<b>LCD Module</b>	LCD_CSB	3	4	RESETp	
	LCD_A0	5	6	MCU_TXi	
	LCD_SCL	7	8	MCU_RXi	
	LCD_SDA	9	10	NC	
	LCD_SDA2	11	12	NC	
	EXT1	13	14	NC	
	LCD_RED	15	16	NC	
	EXT_ADC4	17	18	BOOT0i	
	EXT_ADC3	19	20	EXT_ADC2	
	GND	21	22	EXT_ADC1	
	TEMP	23	24	SMOKE	
	GND	25	26	GND	
	G17	27	28	R17	
	R18	29	30	B17	
	B18	31	32	G18	
	G19	33	34	R19	
	R20	35	36	B19	
	B20	37	38	G20	
	GND	39	40	GND	
	G21	41	42	R21	
	R22	43	44	B21	
	B22	45	46	G22	
	G23	47	48	R23	
	R24	49	50	B23	
	B24	51	52	G24	
	GND	53	54	GND	
	G25	55	56	R25	
	R26	57	58	B25	
	B26	59	60	G26	
	G27	61	62	R27	
	R28	63	64	B27	
	B28	65	66	G28	
	GND	67	68	GND	

Official website: [www.linsn.com](http://www.linsn.com)

Add: Floor 15&16, Jiajiahao Business Building, No. 10168, Shennan Blvd,  
Nanshan District, Shenzhen

Tel: +86-0755-86183590/ 4008836968

	G29	69	70	R29	
	R30	71	72	B29	
	B30	73	74	G30	
	G31	75	76	R31	
	R32	77	78	B31	
	B32	79	80	G32	
	GND	81	82	GND	
Smart Module	SPI_CLK	83	84	LED_Board_A0	Smart Module
	SPI_CS	85	86	LED_Board_A1	
	SPI_MOSI	87	88	LED_Board_A2	
	SPI_MISO	89	90	LED_Board_A3	
	LED_Board_A4	91	92	H164_CSD_A1	
	POWER_CHECK1	93	94	H164_CLK_A0	
	GND	95	96	GND	
	POWER_CHECK2	97	98	MasterCard_DATA	
	LED_Board_Txd	99	100	MasterCard_ID	
	LED_Board_Rxd	101	102	Ctrl	
	FPGA_TXD3	103	104	FPGA_RXD3	
	FPGA_TXD2	105	106	FPGA_RXD2	
	FPGA_TXD1	107	108	FPGA_RXD1	
	GND	109	110	GND	
	GND	111	112	GND	
	HUM_SIN	113	114	HUM_Sample	
	GND	115	116	GND	
	GND	117	118	GND	
	GND	119	120	GND	

### Definition for connector2:

	Earth_Sheild	1	2	Earth_Sheild	
	Earth_Sheild	3	4	Earth_Sheild	
	NC	5	6	NC	
	NC	7	8	NC	
Gigabit	TXIA_P ( Orange )	9	10	TXIA2_P ( Orange )	Gigabit
	TXIA_N ( White Orange )	11	12	TXIA2_N ( White Orange )	

Official website: [www.linsn.com](http://www.linsn.com)

Add: Floor 15&16, Jiajiahao Business Building, No. 10168, Shennan Blvd,  
Nanshan District, Shenzhen

Tel: +86-0755-86183590/ 4008836968

Network	NC	13	14	NC	Network
	TXIB_P (Green)	15	16	TXIB2_P (Green)	
	TXIB_N ( White Green)	17	18	TXIB2_N ( White Green)	
	NC	19	20	NC	
	TXIC_P (Blue)	21	22	TXIC2_P (Blue)	
	TXIC_N ( White Blue)	23	24	TXIC2_N ( White Blue)	
	NC	25	26	NC	
	TXID_P (Brown)	27	28	TXID2_P (Brown)	
	TXID_N ( White Brown)	29	30	TXID2_N ( White Brown)	
	NC	31	32	NC	
	NC	33	34	NC	
	KEY_IN	35	36	DATA_LED	
	GND	37	38	GND	
	A	39	40	CLK	
	B	41	42	SCLK_S	
	C	43	44	LAT	
	D	45	46	SR	
	E	47	48	OE	
	OE_B	49	50	OE_G	
	GND	51	52	GND	
	G1	53	54	R1	
	R2	55	56	B1	
	B2	57	58	G2	
	G3	59	60	R3	
	R4	61	62	B3	
	B4	63	64	G4	
	GND	65	66	GND	
	G5	67	68	R5	
	R6	69	70	B5	
	B6	71	72	G6	
	G7	73	74	R7	
	R8	75	76	B7	
	B8	77	78	G8	
	GND	79	80	GND	
	G9	81	82	R9	

Official website: [www.linsn.com](http://www.linsn.com)

Add: Floor 15&16, Jiajiahao Business Building, No. 10168, Shennan Blvd,  
Nanshan District, Shenzhen

Tel: +86-0755-86183590/ 4008836968

	R10	83	84	B9	
	B10	85	86	G10	
	G11	87	88	R11	
	R12	89	90	B11	
	B12	91	92	G12	
	GND	93	94	GND	
	G13	95	96	R13	
	R14	97	98	B13	
	B14	99	100	G14	
	G15	101	102	R15	
	R16	103	104	B15	
	B16	105	106	G16	
	GND	107	108	GND	
	NC	109	110	NC	
	NC	111	112	NC	
	NC	113	114	NC	
	NC	115	116	NC	
	GND	117	118	GND	
	GND	119	120	GND	

## 5. Working Condition

	Typical	Mini	Max	Unit
Rated consumption	4	3.3	4.8	W
Working voltage	5	4.5	5.5	V
Working current	0.8	0.73	0.87	A
Working temperature		-20	70	Degree
Working humidity		0	95	%

**END**

Official website: [www.linsn.com](http://www.linsn.com)

Add: Floor 15&16, Jiajiahao Business Building, No. 10168, Shennan Blvd,  
Nanshan District, Shenzhen

Tel: +86-0755-86183590/ 4008836968