

## Product Specifications

Single color control card HD-U62

V2.0 20170901

## Overview

---

For signage, store, outdoor advertising and other information display, HUIDU technology launched our U-disk series control card, for updates the display programs by the USB port.

U62 is U-disk series control card, through the USB port to update the program. Cost-effective, simple software to operate, better and rich display effect, supported for a variety of monochrome display.

Application software: HD2016

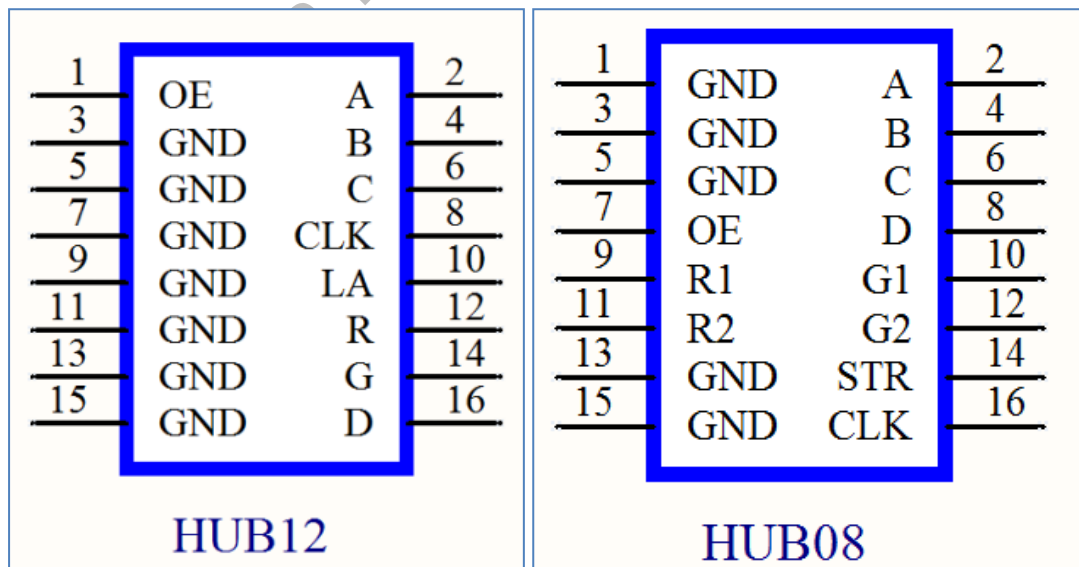
## Features

---

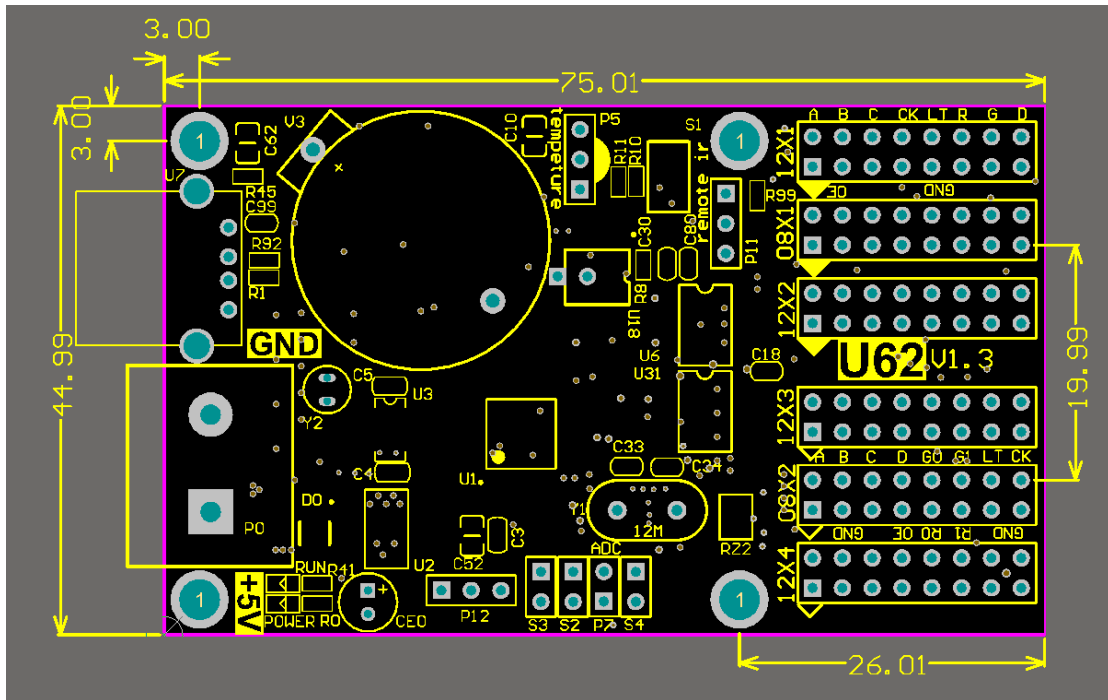
Content	Parameters
Support module	Single color/ dual color/ Tri color
Control range Resolution	Single color:768W*64H Dual color:384W*64H Tri color: 512W*32H
FLASH Capacity	4M Byte
Communication Port	U-Disk
HUB signal	4 HUB12,2 HUB08
Program Quantity	1000pcs Programs. also can change program by button or remote if weld sensor (Remoter can select1-999 Programs)
Area Quantity	20 areas with separate zone, and separated special effects and border
Display Showing	Used indoor outdoor, semi-outdoor, Led Pharmacy Cross signs Showing text, animation, time, clock etc
Display effects	1.Support all languages(Software :HD2016) 2.Support 7 color effects and 64 colors Gray level (HD-U62/U63/U64) 3. Border functions of Program border, area border and Custom design border.

display effect	<p>4.Add Countdown /Count up, Button Countdown / Count up</p> <p>5.Add Text Rotation of 90° 、 180° 、 270° for display</p> <p>Text function of Hollow、 Stroke etc</p> <p>6.Add payment collection function</p> <p>7.Updated program by U-disk</p> <p>8. More than 200 types showing effects</p>
Clock function	<p>1. Support Digital Clock/ Dial Clock / Lunar Time/</p> <p>2. Countdown /Count up, Button Countdown / Count up</p> <p>3. The font、 size、 color and position can be set freely</p> <p>4. Support multiple time zones</p>
Extended Equipment	Remote function、 temperature、 humidity、 brightness etc. (If weld sensor) .Remoter can select1-999 Programs
Automatic switch screen	Support switch on/off display by time automatically
Brightness adjustment	Brightness setting by Custom、 Automatic(weld sensor) 、 by time period regulation

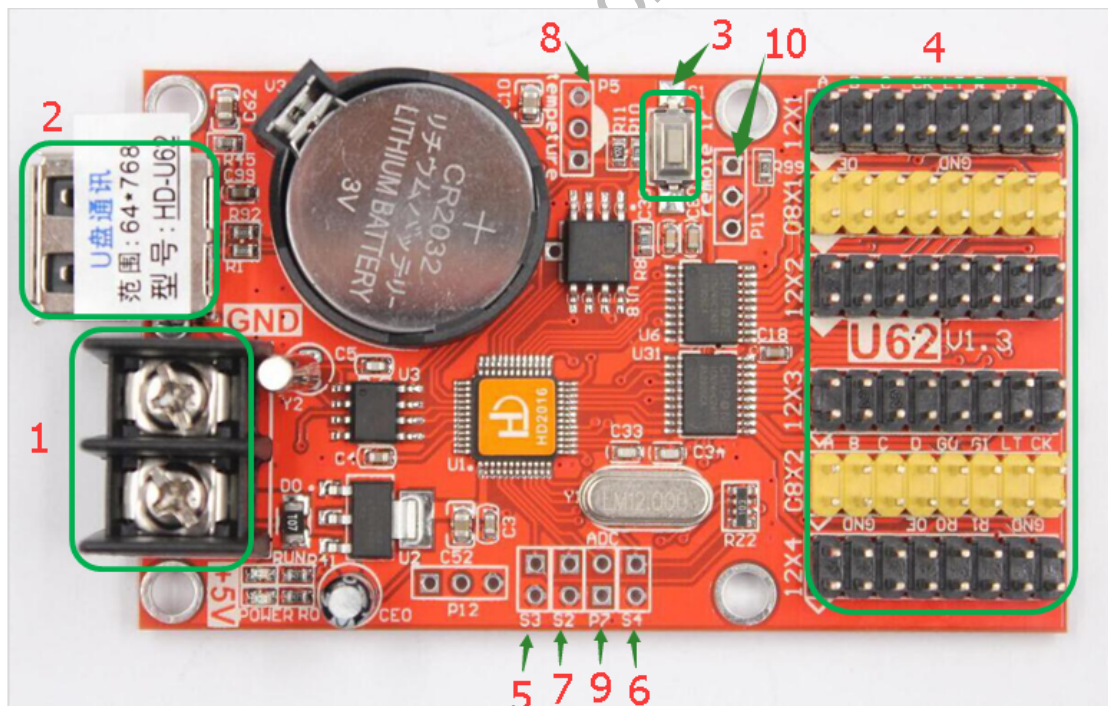
## Port Definition



## Setup Diagram



HD-U62 Photo



- ①: Power connector, connect 5V power supply;
- ②: USB ports, Updated program by U-disk;
- ③: Test button, click to switch screen test status;

- ④： 4HUB12, 2 HUB08, connect the display;
- ⑤： S3, connect the point switch, switch the previous program, timer reset, count down;
- ⑥： S4, connect the point switch, program control, time-out, count reset;
- ⑦： S2, connect the point switch, switch the next program, the timer starts, count plus;
- ⑧： P5, connect temperature / humidity sensor;
- ⑨： P7, connect the brightness sensor;
- ⑩： P11, connected to the infrared receiver, with the remote control

## Technical Parameters

---

	Minimum	Typical value	Maximum
Rated voltage (V)	4.2	5.0	5.5
Storage temperature(°C)	-40	25	105
Work environment temperature (°C)	-40	25	80
Work environment humidity (%)	0.0	30	95

## Precautions

---

- 1) To ensure that the control card is stored during normal operation, make sure the battery on the control card is not loose;
- 2) In order to ensure the long-term stable operation of the system, please try to use the standard 5V power supply voltage.