

Catalog

Chapter 1 Install and Uninstall.....	1
1. Software Install.....	1
2. Software Uninstall	3
Chapter 2 Network setting	4
Chapter 3 Hardware Setting(Debug Screen).....	1
1.Send card parameters.....	1
2.Connection settings	1
3.Receive card parameters.....	2
4.Smart setting.....	5
Chapter 4 Edit the Program	8
1.Software Interface	8
2. Program Structure	9
3. New Screen.....	10
4. Adding programs	11
5. Add Custom Area	13
6. Add video, pictures, animation, forms and other source files.....	14
4) Add multiple lines Text.....	17
5) Add Single Line Text	18
6) Add Clock.....	18
8) Sensor.....	1
7. Program Preview & Save	5

Chapter 5 Program Update.....	1
1. Network Cluster sending.....	1
2. Update program by U-Disk	1
3. U-Disk expand memory Limitless	2
5.Brightness setting	4
Chapter 6 System Setting	1
Chapter 7 System Control	2
1.play mode setting.....	2
2. Brightness setting.....	1
3. Time Correction	3
4. Screen Testing	5
5. Firmware Update.....	6
6.Switch machine settings.....	7
7.Update device name.....	8
8.Direct search by manual.....	9
9.Start-up screen	10
10.Device Reboot	10
11.Wi-Fi settings	11
12.Trial authorization.....	13
13.Relay setting.....	14
14.Network settings.....	15

Chapter 1 Install and Uninstall

1. Software Install

- 1) Open the CD, double click the icon HDPlayer.X.X.X.X.exe(Like: HDPlayer 3.2.97.0.exe). Select the installer Language, click “ok”.



Fig. 1-1 Installer Language

- 2) Installation Interface, Click “next”.



Fig. 1-2 Installation Guide

- 3) Confirm the Installation type, Click “Next”.

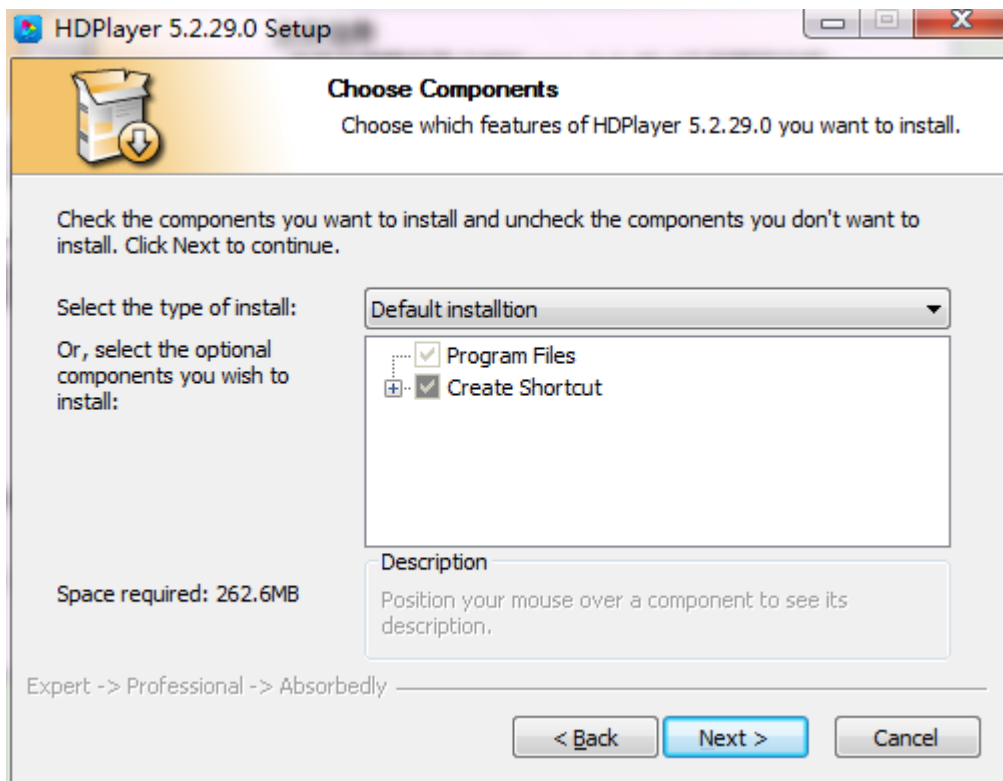


Fig.1-3 Installation type

4) Choose Installation Path, Click “Install”.

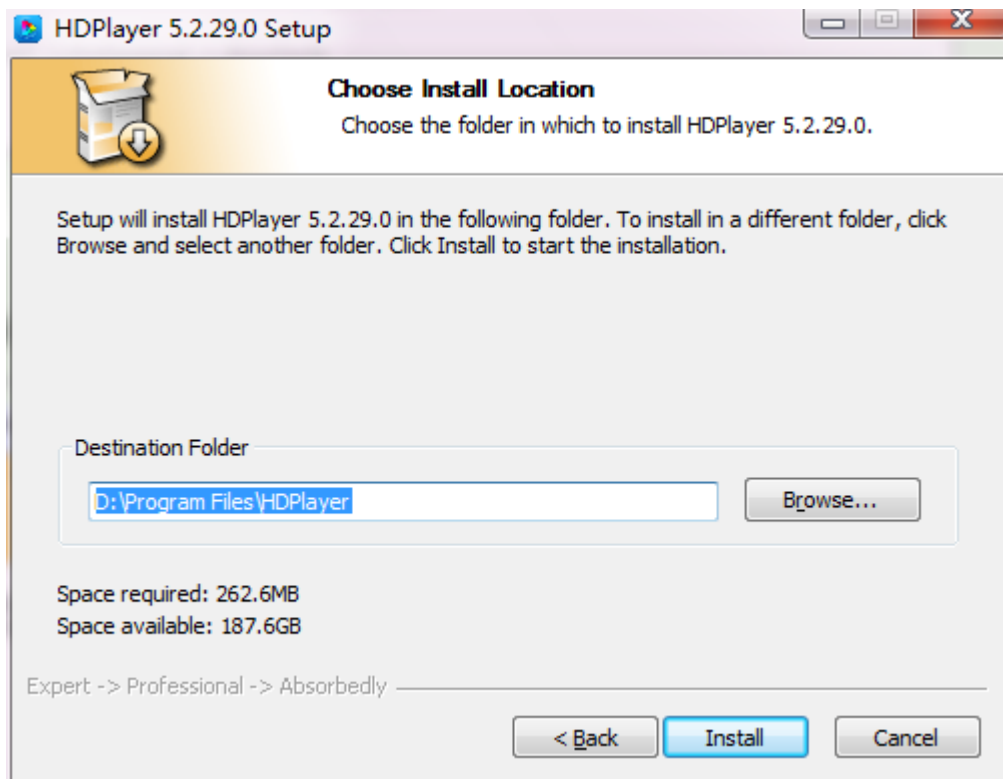


Fig. 1-4 Installation Path

5) Click “Finish”.

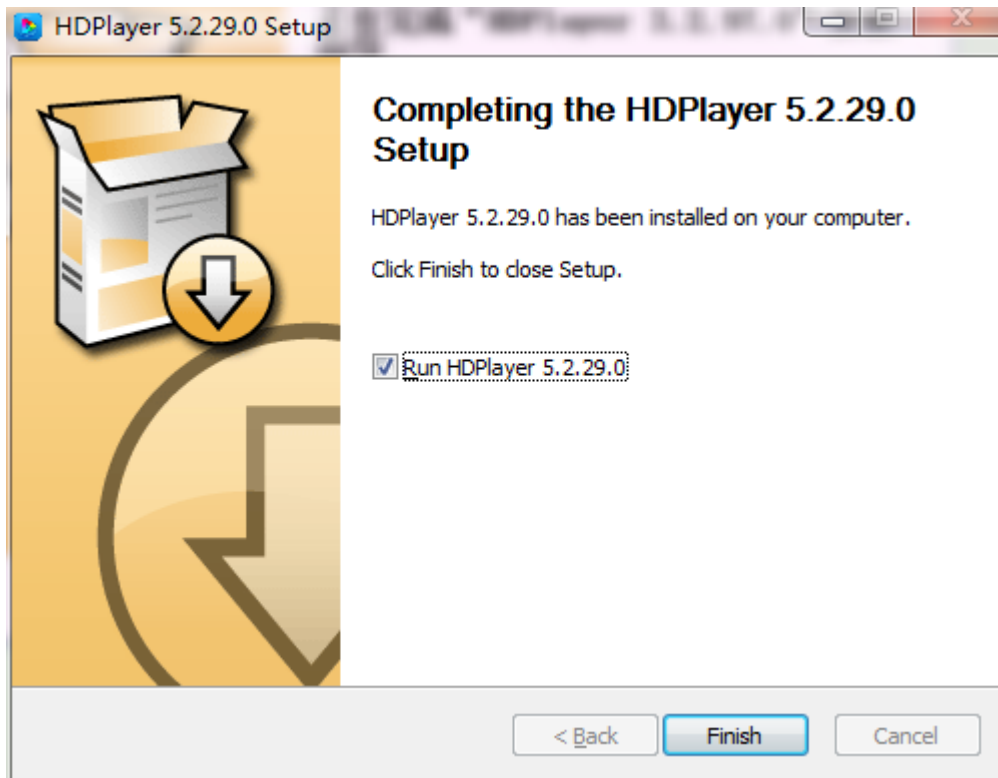


Fig. 1-5 Finish Installation

2. Software Uninstall

“Start”→ “All Programs”→“HDPlayer”→“Uninstall HDPlayer”

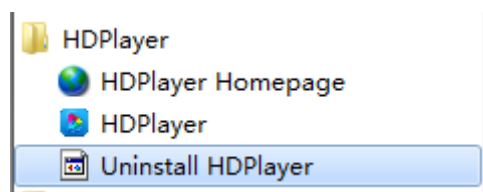


Fig.1-6 Software Uninstall

Chapter 2 Network setting

The controller can connect to the computer directly. It can also connect to the computer via the Router. No need to do network setting.

When connected with computer, the network port (The Green light always flicker, the orange light bright), then wait for few seconds (Windows XP need more than 50Seconds, Window7 only need 40Seconds).When the right corner of computer show Network normal (see below), it means it have been connected of network, -----then open the software HDPlayer, it will find the controller ID automatically.



Fig. 2-1 Network normal connected



Fig. 2-2 Network abnormal connected

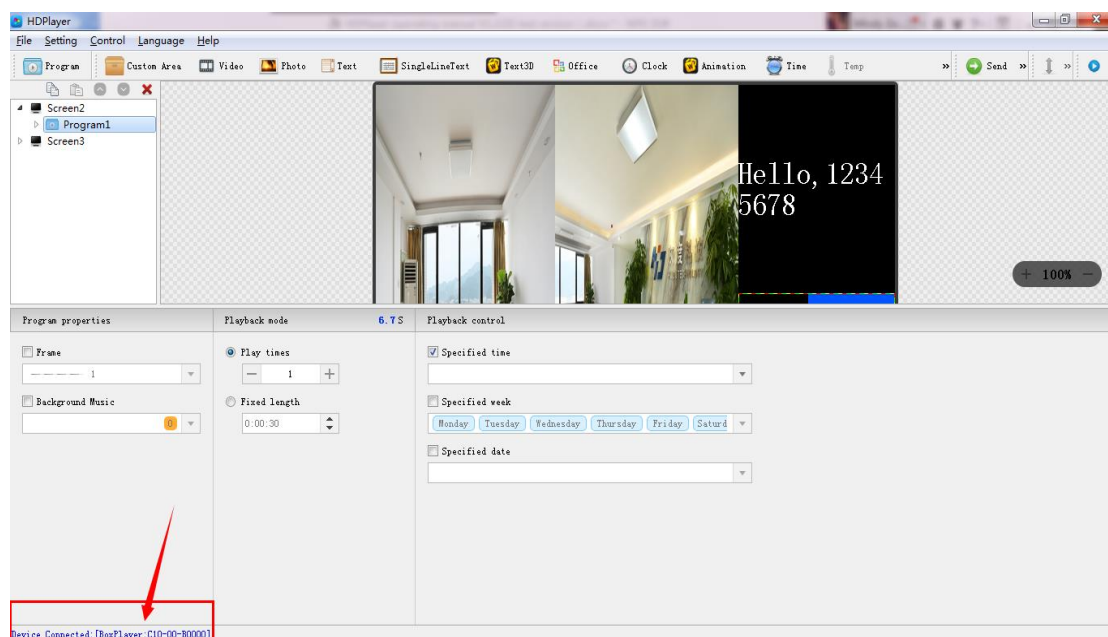


Fig. 2-3 Device Found

If the cards connect to the computer via the Router, then the computer can control all the cards at the same time.

Control card network setting:

Obtain IP automatically: tick 'Set' then tick 'Use' then select 'Set' in the Bottom right corner.

Get IP manually: tick the "Set" option, and then remove the "Use" option to set the IP and other network information of the control card. After setting, you need to select the "Set" button to take effect.

(Note: Use this function with caution! The IP must be in the same network segment as the computer's local connection).

When the control card is controlled across network segments in the local area network, it is necessary to set a static IP address for the control card, Click 'Control' - 'Other setting' - 'Device Network Information', Enter the IP of the network segment where the control card is located, and it can not conflict with other IPs

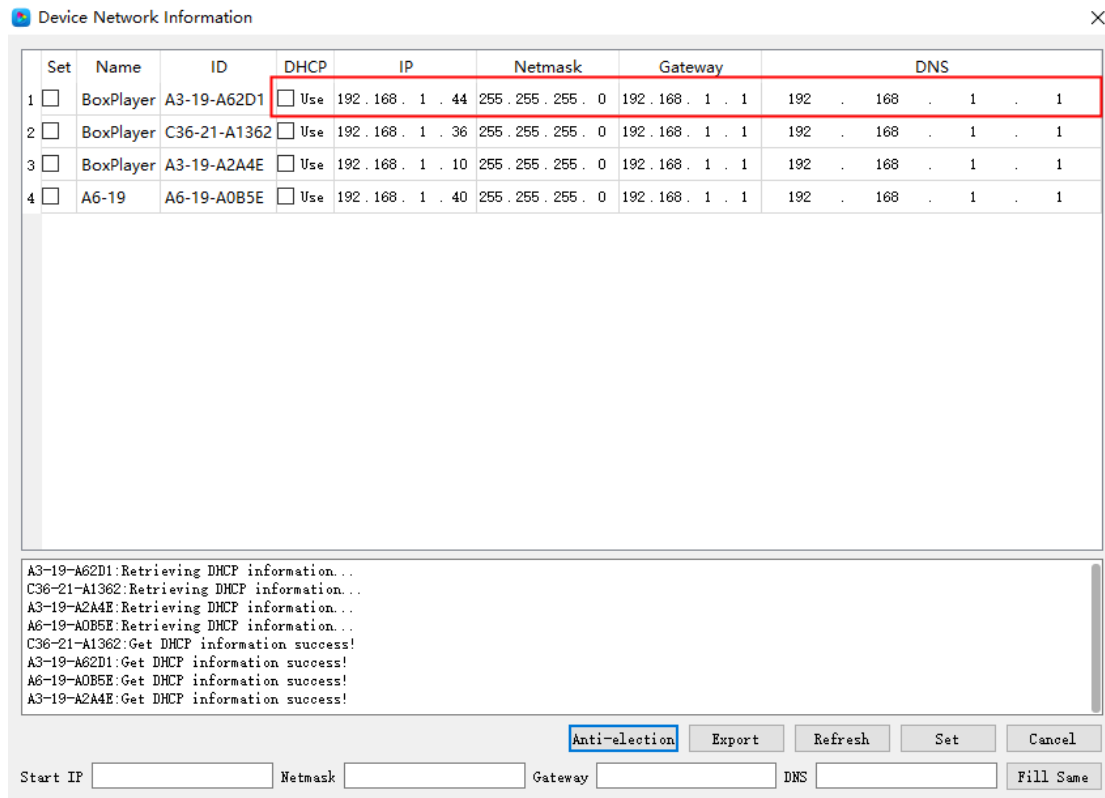


Fig.2-4 set a static IP address for the control card

Chapter 3 Hardware Setting(Debug Screen)

Click "Settings" → "Hardware Settings", password 168 to enter the hardware settings.

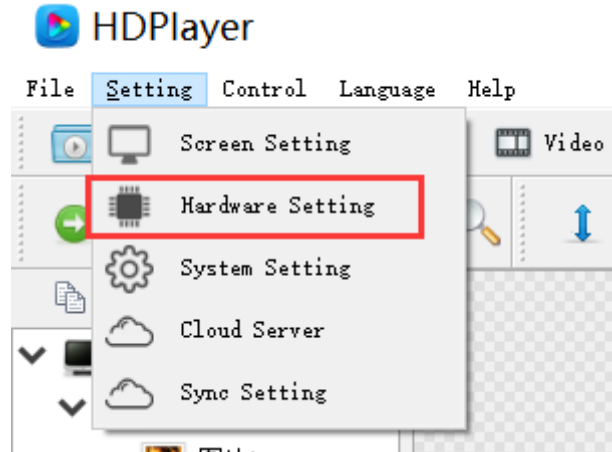


Fig. 3-1 enter hardware setting

HDSet is a debugging software shared by the full-color synchronous and asynchronous series, The settings window is divided into Screen Configuration, Firmware upgrade, Screen test, MultiFunction Card, and Other.

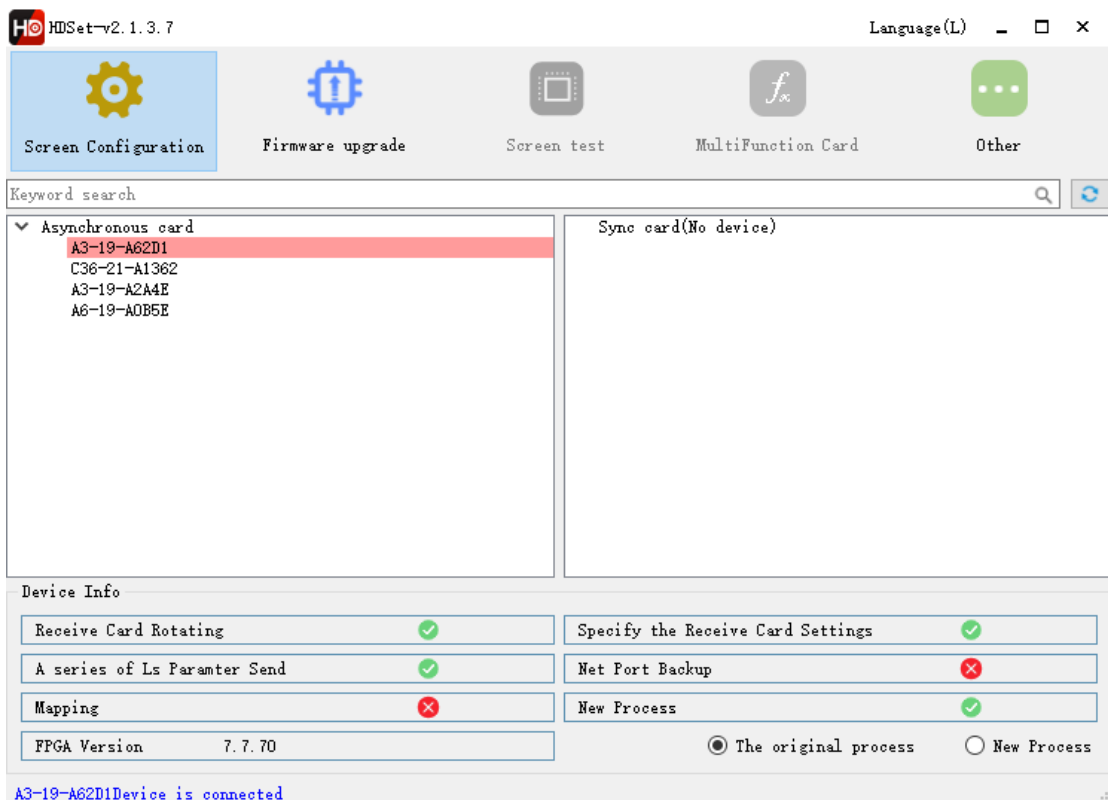


Fig. 3-2 hardware setting

Screen Configuration: Used when debugging the screen, including three sections of sending card parameters, receiving card parameters and connection settings;

Firmware upgrade: Support the upgrade of receiving card, synchronous sending card and video processor; (asynchronous sending card is not upgraded here)

Screen test: Open on the computer desktop, screen test window; (used for synchronized system)

MultiFunction Card: Synchronize the settings of multifunction card Y1

Other: Video processor setting and calibration, etc.;

Next, we introduce the use of sending card parameters, receiving card parameters and connection settings in the display configuration. Other functions are not introduced here. For details, please refer to 《HDSset Instructions》

1. Send card parameters

In the sending card parameters, Other parameter information such as the version of the receiving card can be detected

Note: In the interface of "Send card parameters", click "send", only send the send card parameters, if you want to send "connection setting" or "receive card parameters", need enter to the interface of "Connection Settings" and "Receive Card Parameters".

2. Connection settings

Click "Connection Settings" to enter the interface of connection settings.

This page can quickly and easily set the connection of the receiving card. From the front of the screen, the card 1 is the card connect to the sending card , next is card 2...and so on.

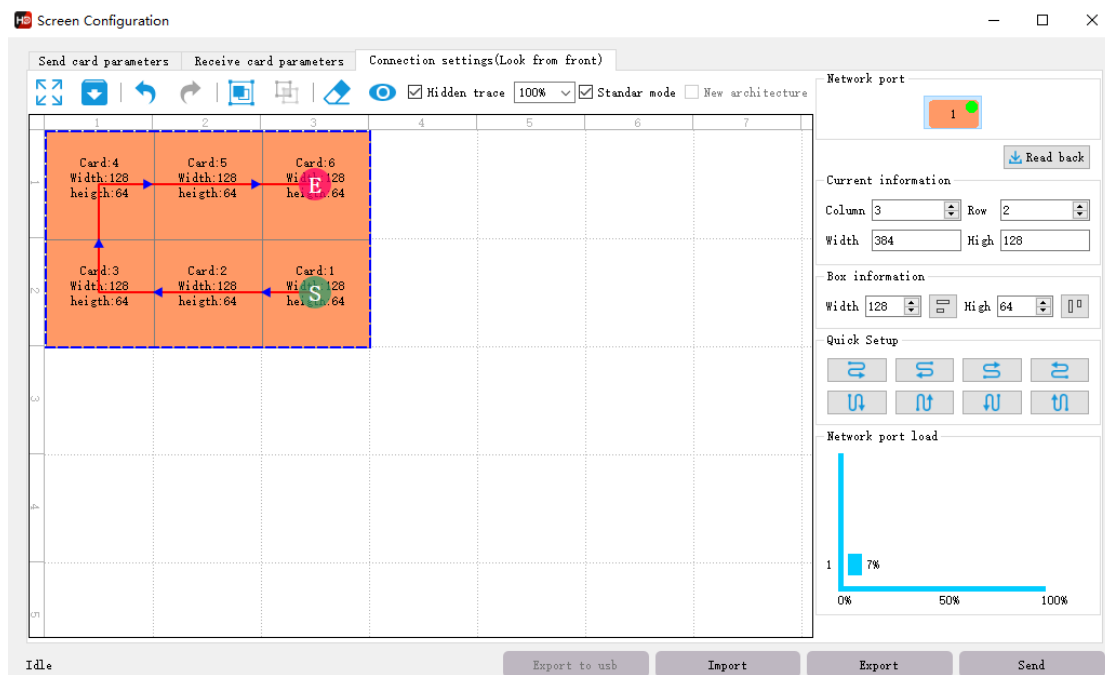


Fig. 3-3 standard connection setting

3.Receive card parameters

Click ‘receive card parameters’, this interface is for the gray level, refresh rate, PWM register parameter settings, the parameters of this interface directly affect the effect of LED display screen .

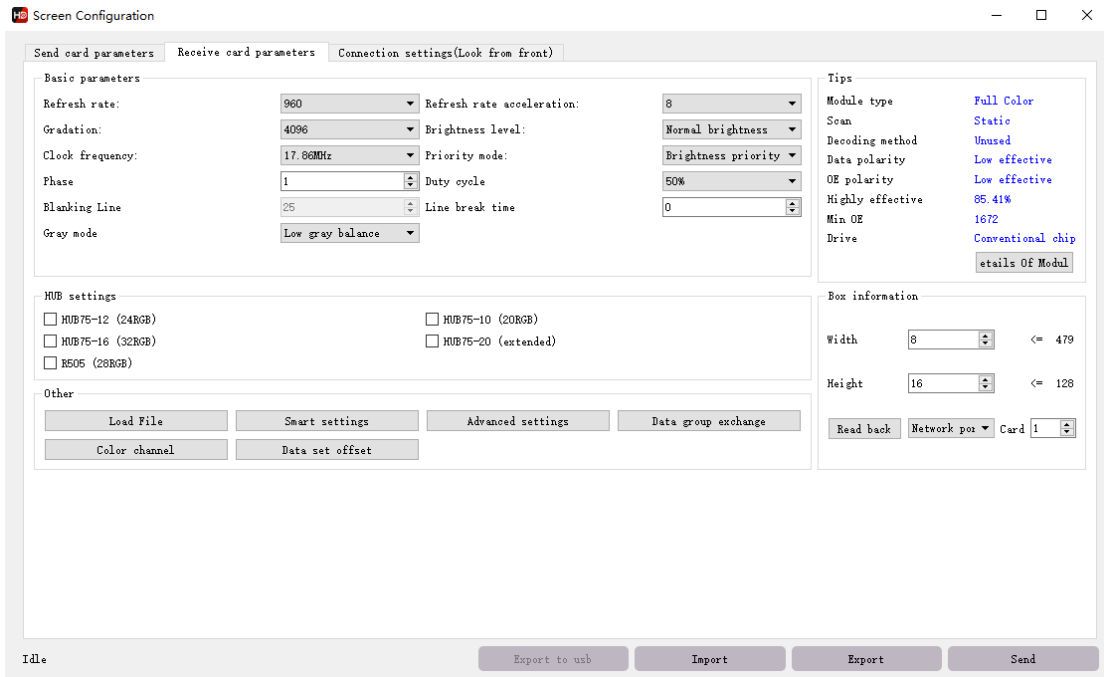


Fig. 3-4 receive card parameters

- 1) Load File, When the computer is connected to the Internet, you can download the configuration files of each manufacturer, and then connect the device, select the corresponding file, and click “OK”
(If you can't find the corresponding parameter file, refer to point 4, do smart setting.)

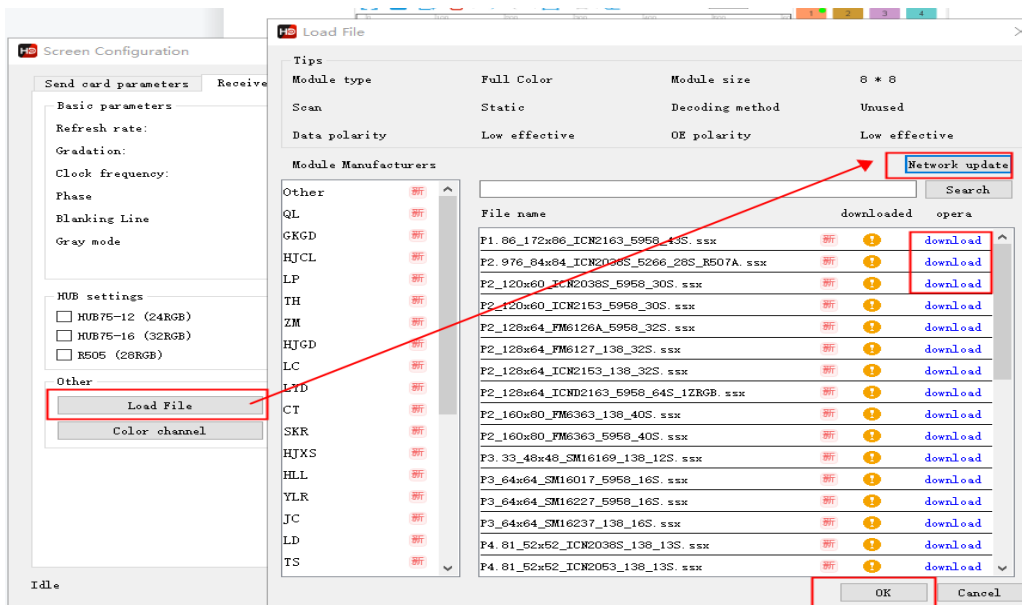


Fig. 3-5 Universal module

- 2) Smart setting, for the all module, if there is no corresponding configuration file in ‘Universal module’, the module parameters can be set by ‘Smart setting’.——For details, see section 4.
- 3) Advanced setting , In this interface, you can adjust gamma, color correction and other parameters to further adjust the effect of the LED screen display.

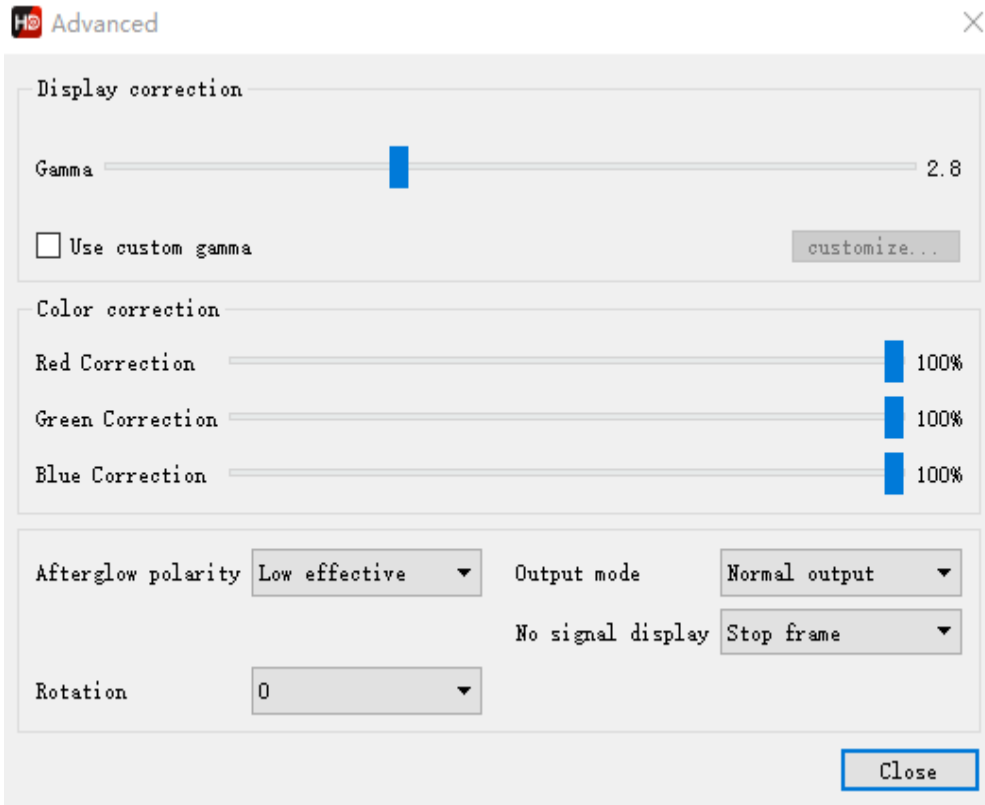


Fig. 3-6 advance setting

- 4) Data group exchange, use for exchange output data from one ports to another ports.

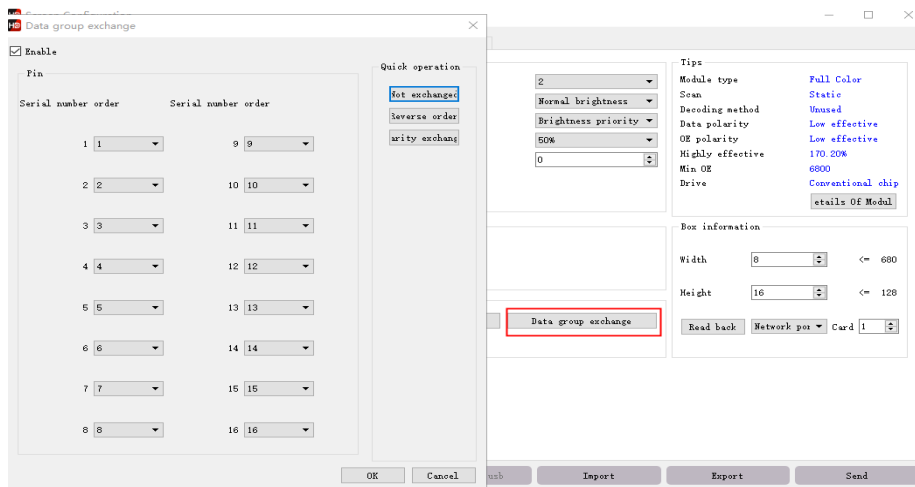


Fig. 3-7 data group exchange

5) Extended attribute, use for some special IC, such as high refresh rate IC. Register configuration is required to set up with this function.

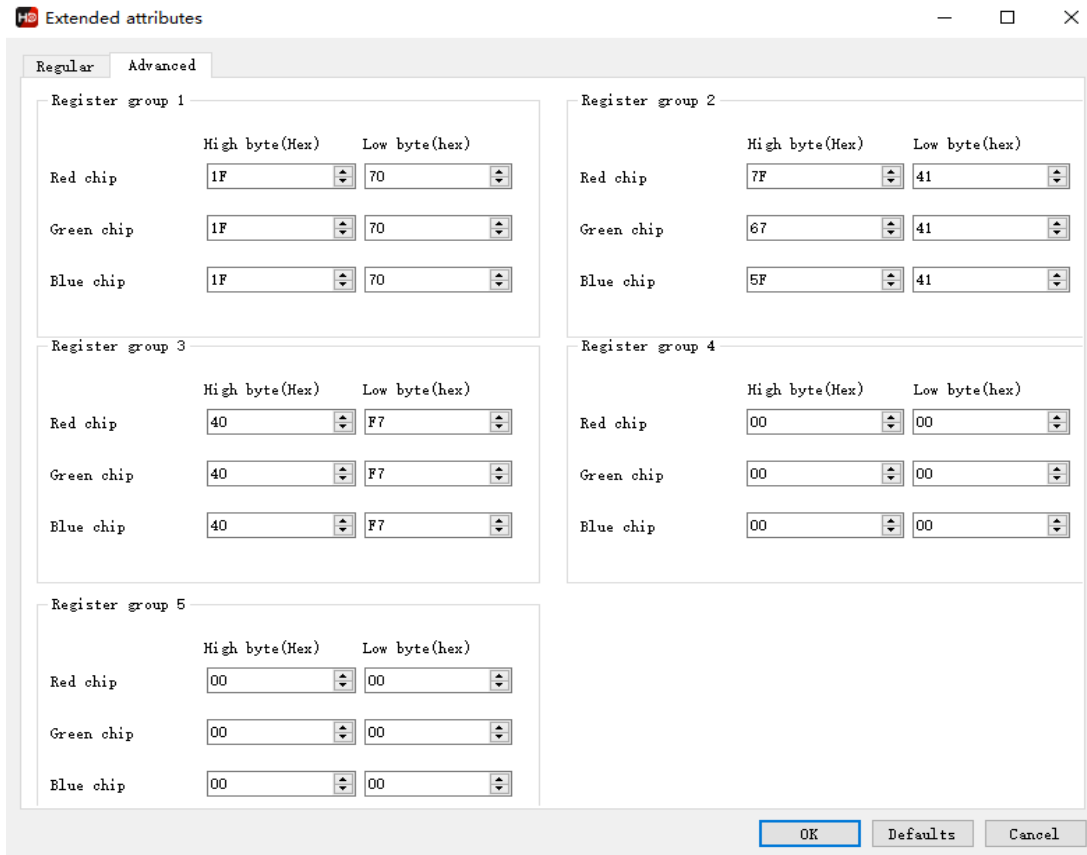


Fig. 3-8extended attribute

6) Data set offset ,use for some non-rectangular screens, such as cross screens, we can choose the data set offset to make it display ok.

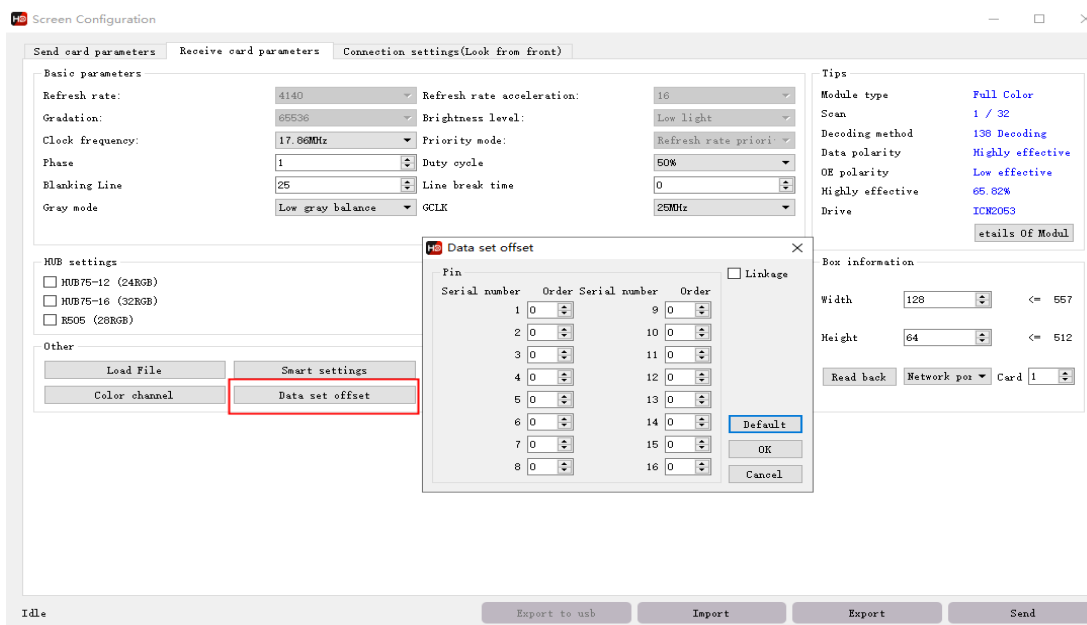


Fig. 3-9 data set offset

4.Smart setting

1) The first step for Smart setting, need to set the screen color type, single module width(in pixel), module chip type, and decoding mode (drop-down options are: 138 decode, non decoding, 595 decode, 5958 decode, etc.). If the module is larger than 16 scan, please check 'More than 16'.

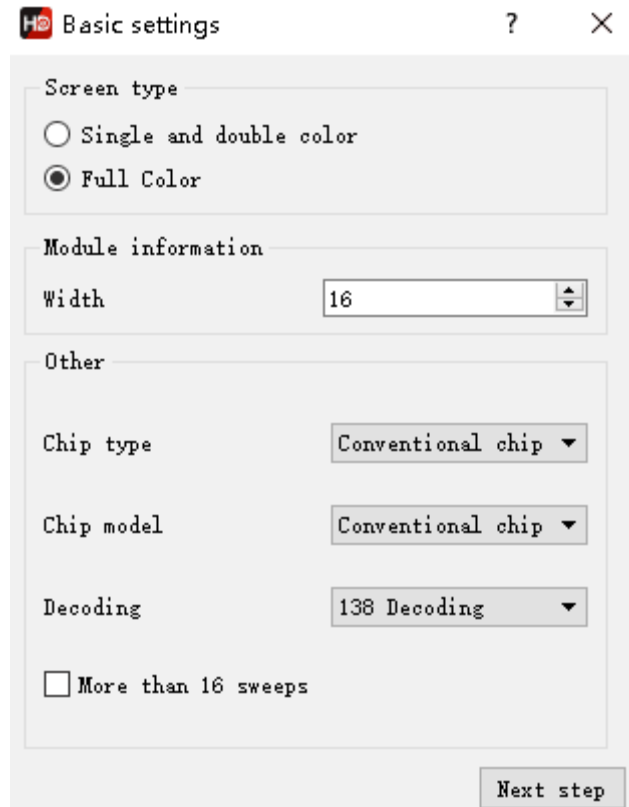


Fig. 3-10 basic setting

2) Data polarity setting, In this step, please try to select A B to see if the module is fully lit. Select the corresponding option in the display state according to the module performance.

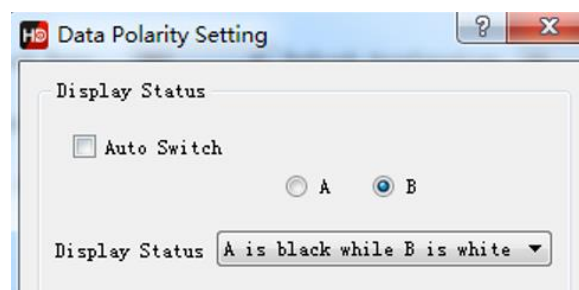


Fig. 3-11 data polarity setting

3) OE polarity setting, At this step, please try to select A B to observe the brightness of the module. According to the performance of the module, select the corresponding option in the display state.

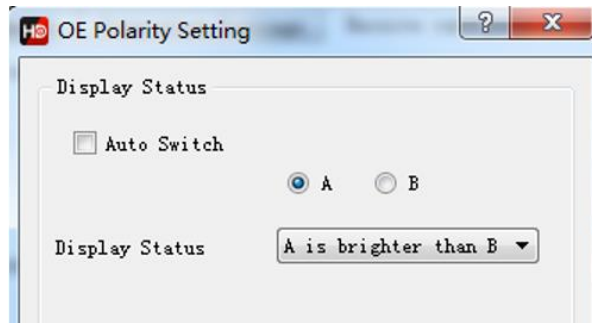


Fig. 3-12 OE polarity setting

4) Color channel setting, At this step, please try to select the status A ,B,C,D to observe the color display of the module. According to the module performance, select the corresponding option in the display status. If A is selected, the screen displays red, then choose red; if A is selected, the screen displays blue, then you need to change red to blue.

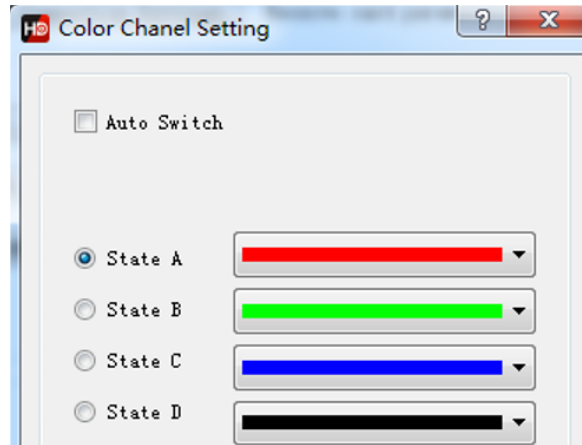


Fig. 3-13 color channel setting

5) lines controlled by one RGB data, Please observe the performance of the module and fill in the corresponding values. This step is to test the height of a set of RGB controls

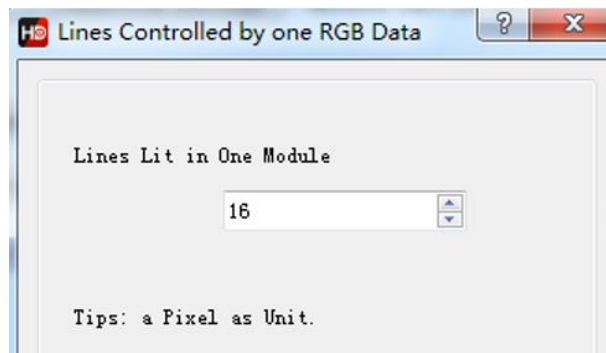


Fig. 3-14 lines controlled by one RGB data

6) Determine the scan module, Please observe the performance of the module and fill in the corresponding values. This step is to test the scan type.

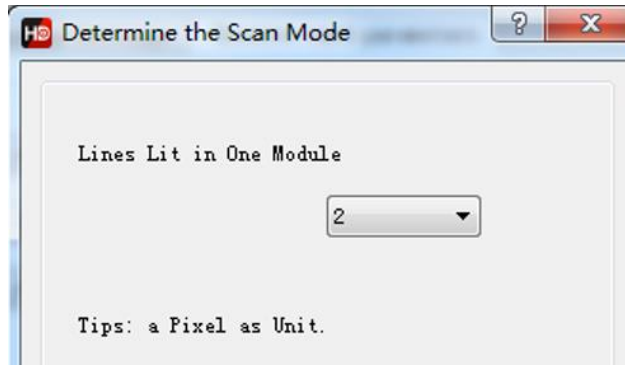


Fig. 3-15 determine the scan module

- 7) Alignment description, Please observe the module performance and click the corresponding cell according to the location of the flashing point .

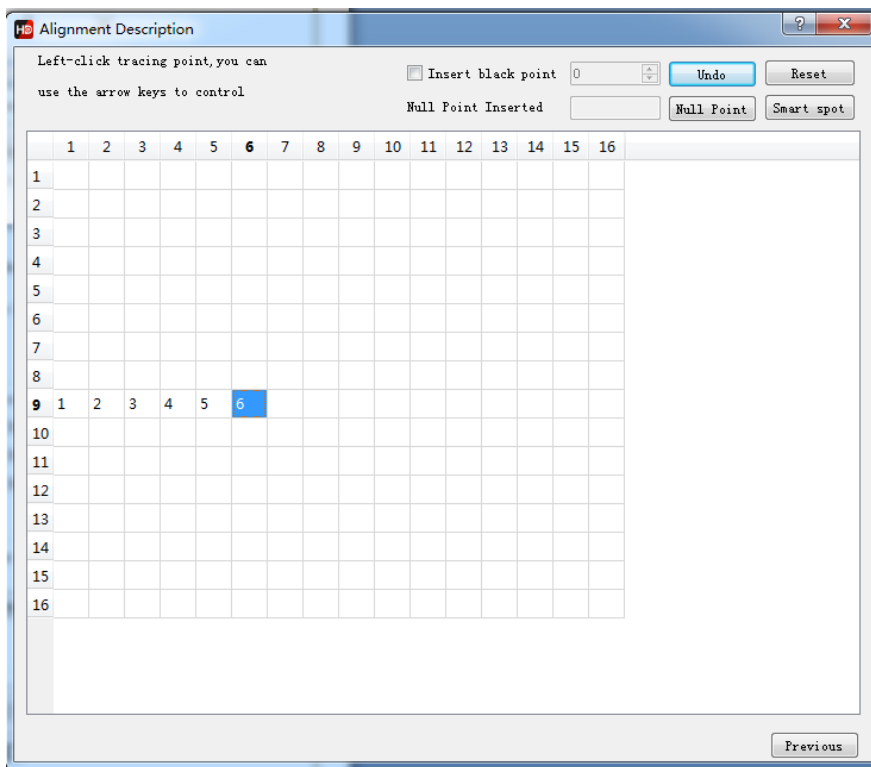


Fig. 3-16 alignment description

There is one point in the module which is in the upper left corner of the screen is flashing ,and which point is flashing, click on the corresponding point in the table. For example, the 9th line, the 1st point is flashing, then click the point (9th, 1st) in the table. Then the point (9th , 2th) is flashing, then click it, following the flash point until all table is clicked.

After you finish, click Save to complete the smart settings.

Chapter 4 Edit the Program

1. Software Interface

There is two parts in the software: play window and edit window.

Play window (what will show on the display) : Use for showing the videos, photos and texts etc.

Edit window: Include the menu bar, tool bar, tree area, attribute area and status bar.

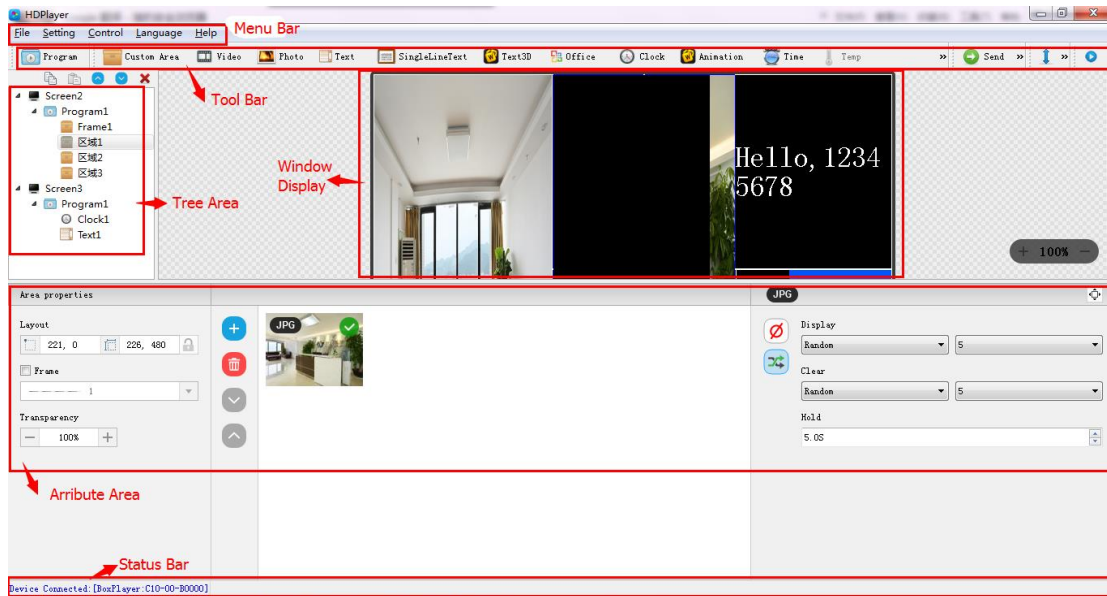


Fig.4-1 Software Interface

Menu Bar: Include files, setting, control, language and help.

Tool Bar: Include program, area, source file, text, document, clock and timer etc.

Attribute Area: Showing each section's information; Set the frame, the playing effect and playing time.

Tree Area: Showing all the contents of this program.

Status bar: Detecting the card information.

2. Program Structure

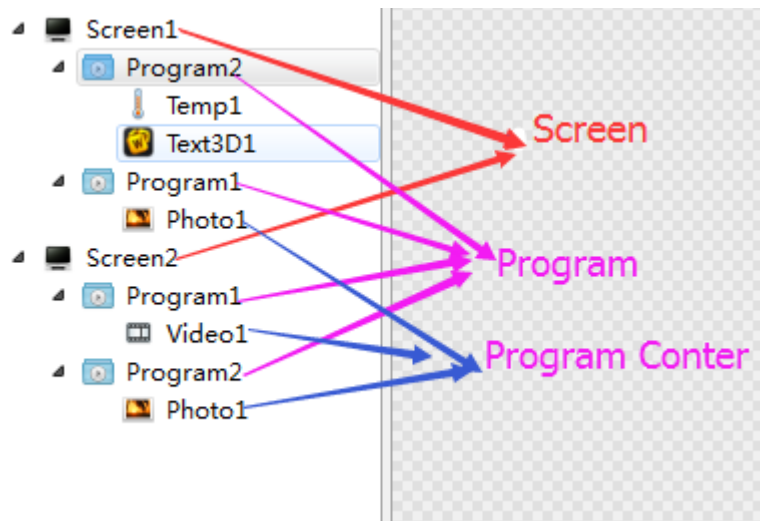


Fig.4-2 Program Structure

Screen: The LED large screen used by the user, the display content on the large screen is determined by it. Each "LED screen" has a parallel relationship, and multiple program pages can be added to the LED screen.

Program: The program page refers to a set of program windows and program content set by the user. Each "program page" has a parallel and sequential play relationship.

Program center: The specific content displayed on the LED screen. Including videos, pictures, texts, documents, clocks, timings, etc. The "play content" under the same program exists at the same time and is played at the same time. The content added first is at the bottom layer, and the content added later can cover the content added first, as shown in Figure 4-2, Program 2, 3D text of display screen 2, Will be overlaid on the picture.

3. New Screen

Select the menu bar **【File】** → **【New】** option or press Ctrl + N key to create a new display, and can add multiple display at the tree area. To delete the display, select the display, and then press Delete or right-click to select the Delete option to delete the display.

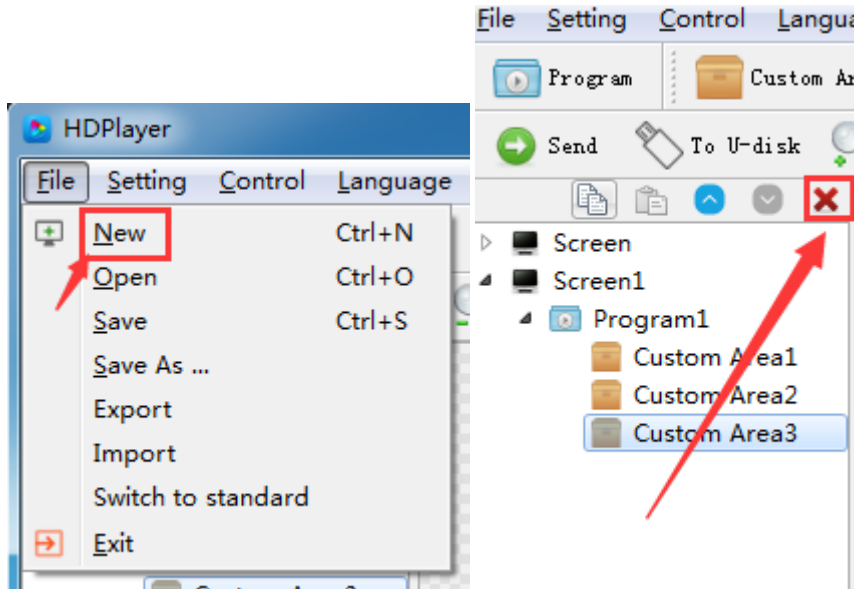


Fig.4-3Add or delete display

1) Setting the play window

Click **【Setting】** → **【Screen Parameter Setting】**, into the parameter setting interface:
(The width and Height it is led display size)

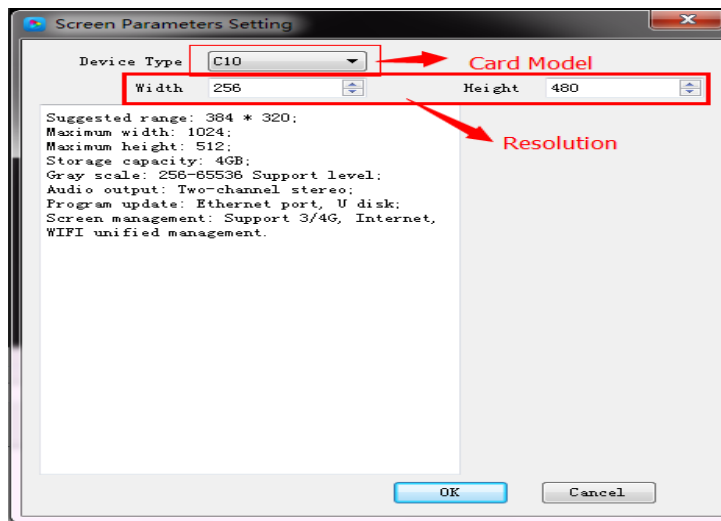


Fig. 4-4 Screen Parameter Setting

The default is use "hardware settings" read back the parameters of the control card;
 When you not select the "hardware settings", you can set the device model, module type, width and height;

If the control card is connected to the computer, the system will show the control card ID in the "Select Device" option and select the device automatically.

The Software supports "display" rename, delete, create, adding programs, send, close and other operations.

2) Display properties

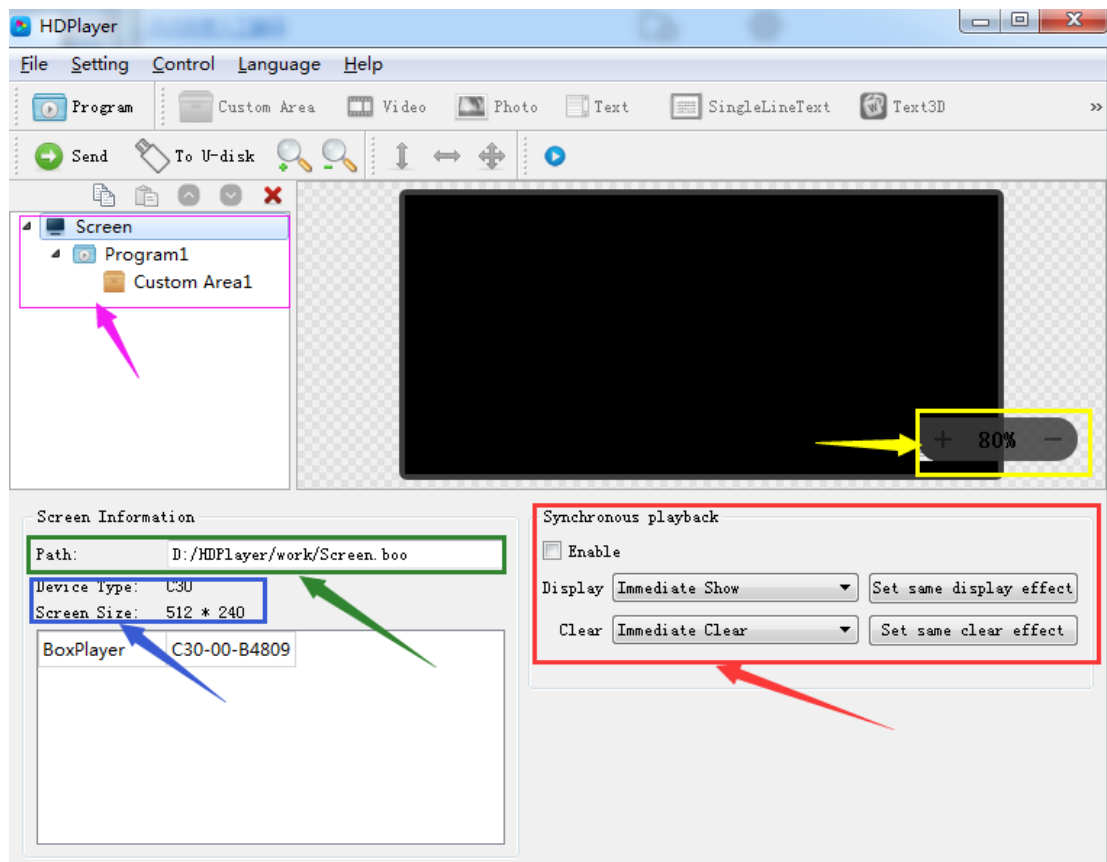


Fig. 4-5 Display properties

4. Adding programs

Click the "program" icon on the toolbar to create a new program; you need to add a display before you add a program. One display can add multiple programs, click the shortcut bar "delete" button can delete the "program".

Users can right-click to rename, delete, add, copy, and move the "program".

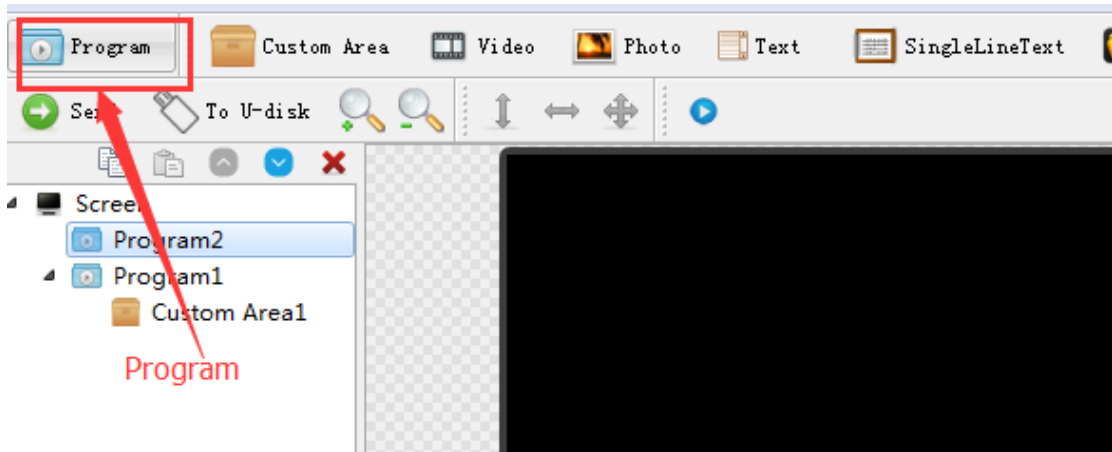


Fig. 4-6 adding new programs

1) Program attribute

In the program attribute, we can set the play time, duration, what time to play and play background music and borders; also can choose a number of background music, the setting has to be sent to the control card so it can take effect.

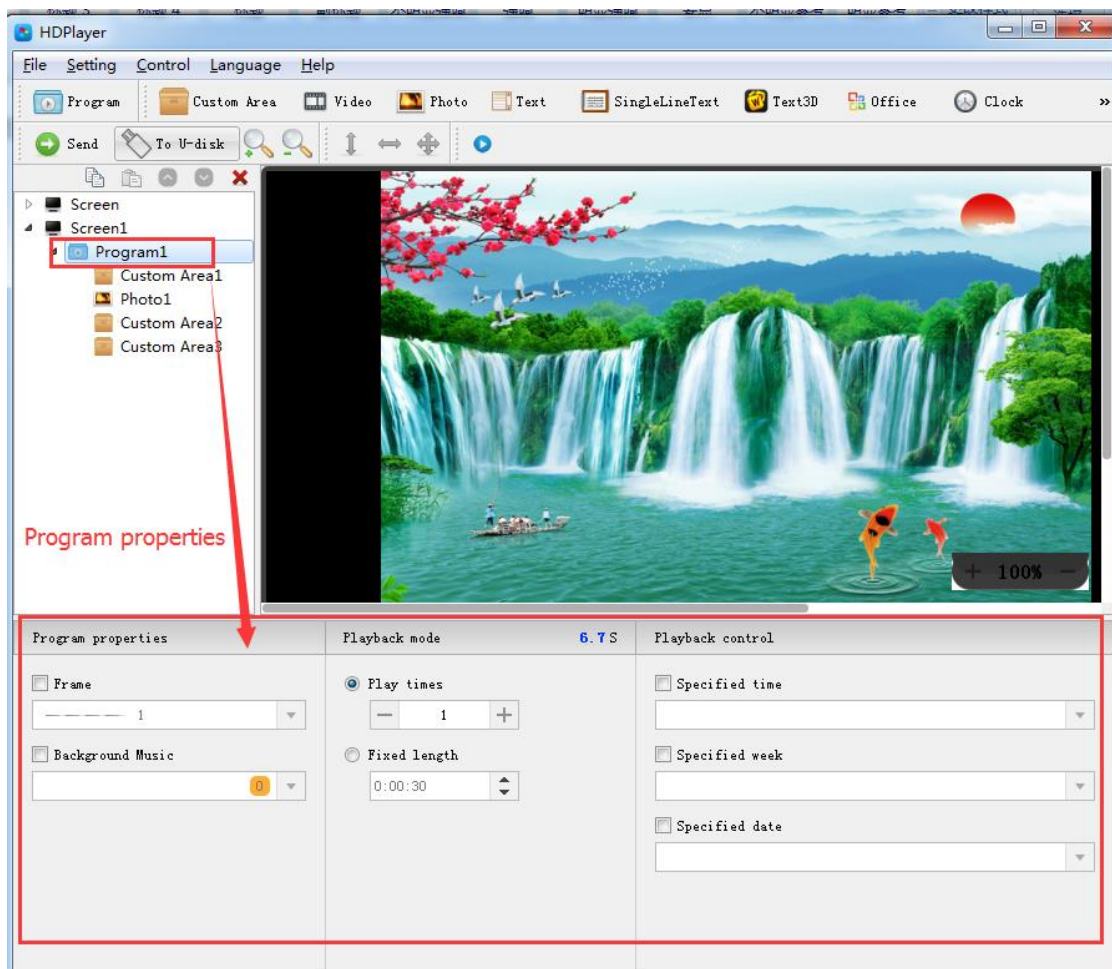


Fig. 4-7Program attributes

"Specified time" is the program playing time, "playing time" means play at a certain time or time period.

5. Add Custom Area

Click the "Custom Area" icon on the toolbar to create a new area (a blue border area appears on the analog display). It needs to add a program before you add a zone. You can add multiple areas under a program.

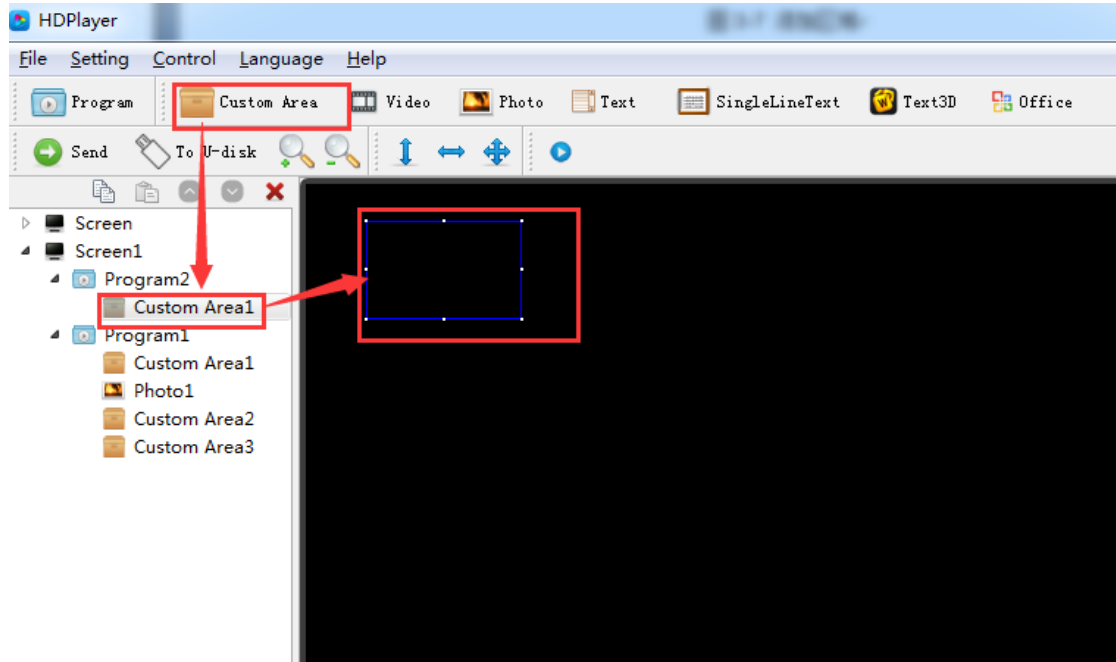


Fig. 4-8 Add Custom Area

Right-click the "area" can rename, delete, and add, copy, move and other operations.

1) Area attribute

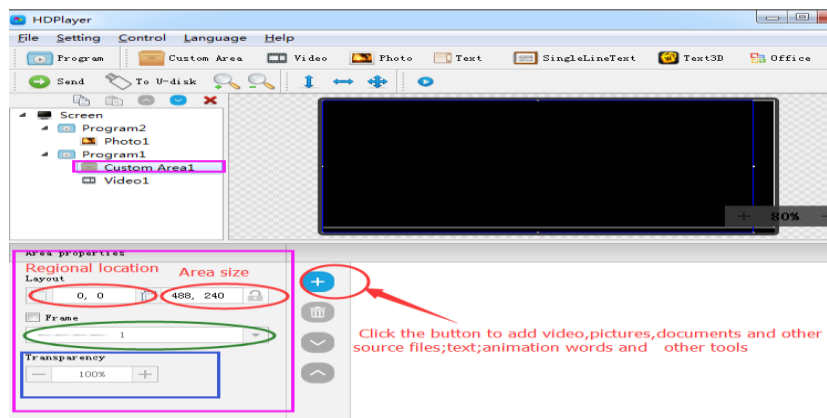



Fig. 4-9 Area attributes

Change the location and size of the area:

- Set the X / Y coordinate, the width and height
- Drag the area or stretch in the playback window
- Choose this  option

You can also set the area border and the transparency.

6. Add video, pictures, animation, forms and other source files

Click the corresponding icon in the toolbar to add video, picture, animation, excel, Word, PPT and other source files, to delete the "source file", click the shortcut bar "delete" button.

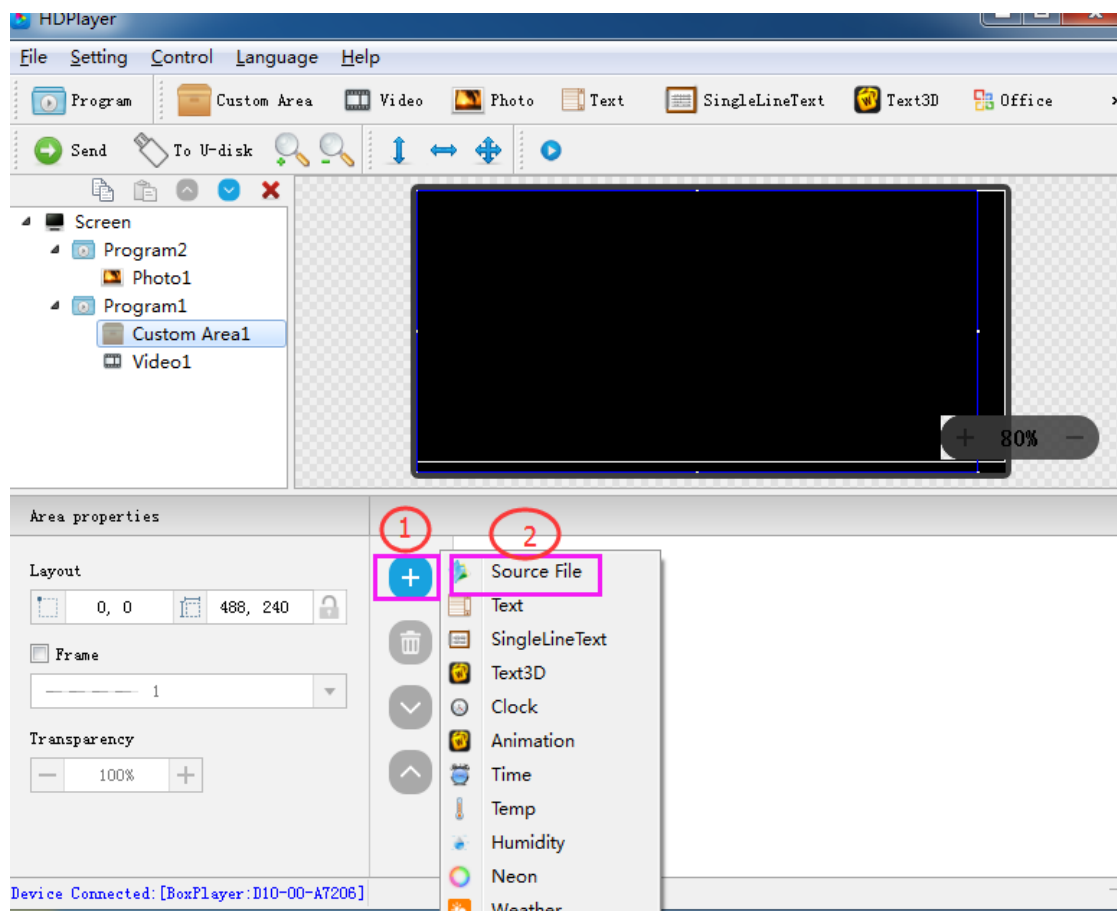


Fig. 4-10 Add source files

1) video attributes

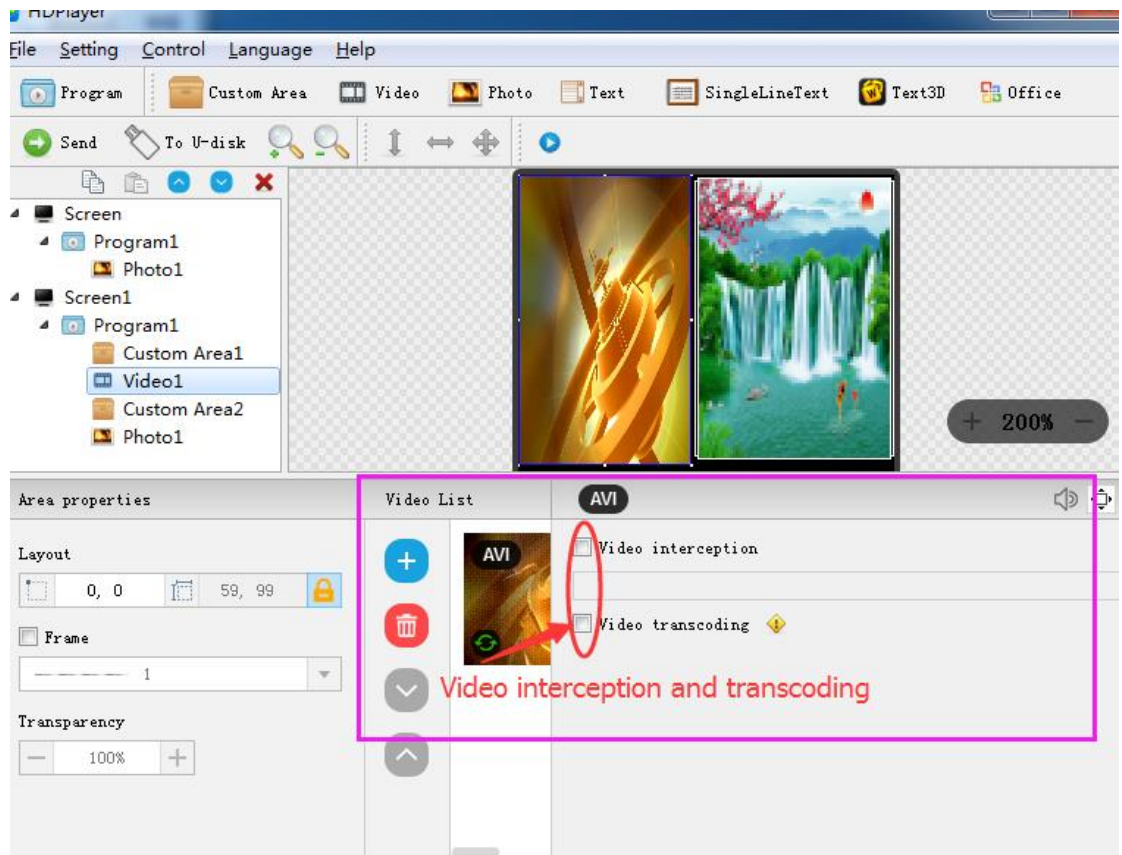


Fig. 4-111video attributes

Note: For unconventional encoded videos, you need to check "Video Transcoding" and wait for the transcoding to complete before sending, otherwise the video may not be played.

2) Photo properties

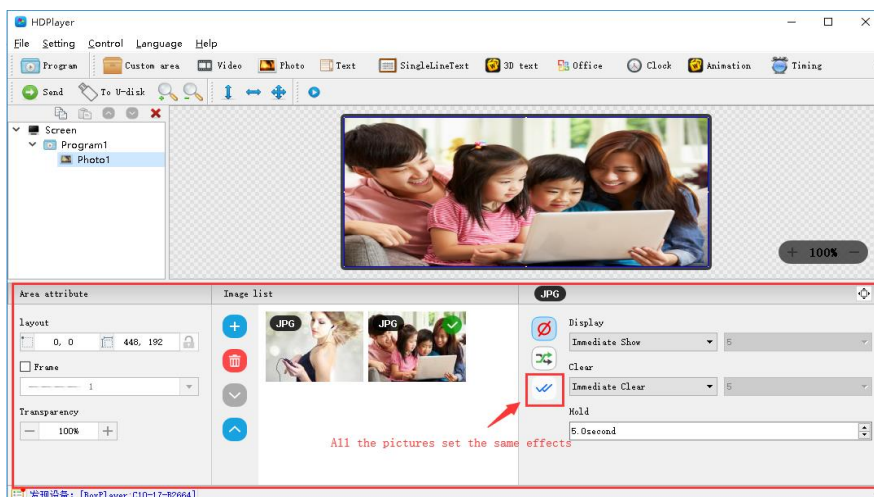


Fig. 4-12 Photo properties

We can set the picture display effects, display speed and the time of the displays and clear.

3) Gif animation properties

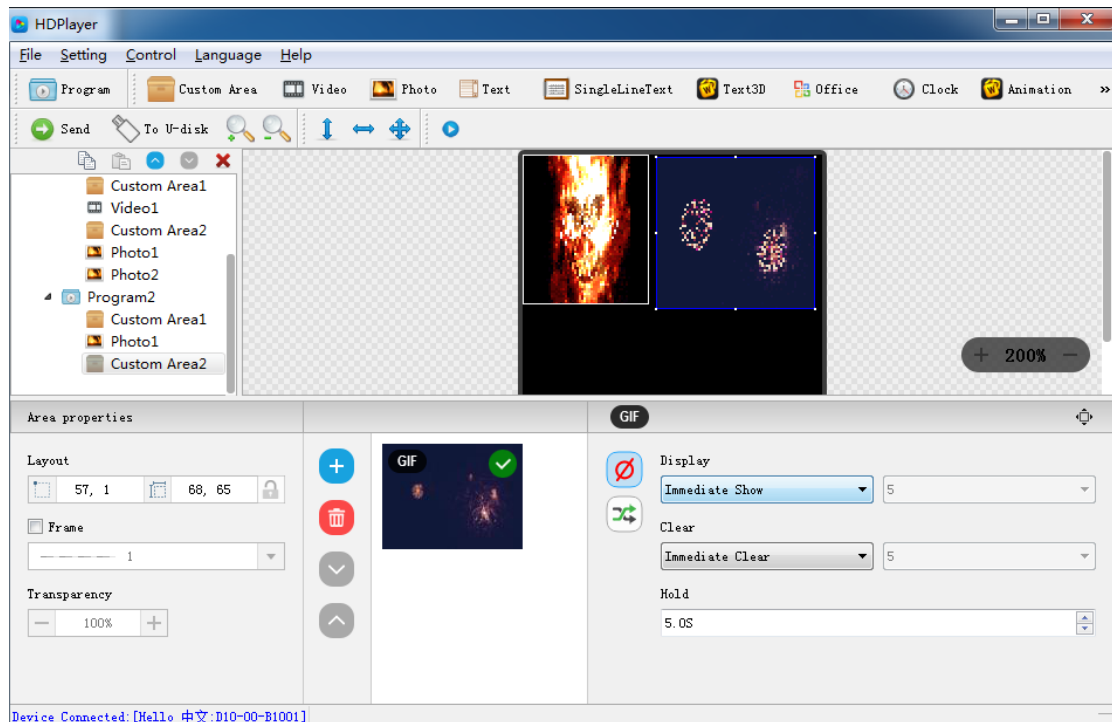


Fig. 4-13 Gif animation properties

We can set the picture display effects, display speed and the time of the displays and clear.

4) Add multiple lines Text

Click the "text" to add multiple lines text, to delete the "multi-line text", click the shortcut bar "delete" button.

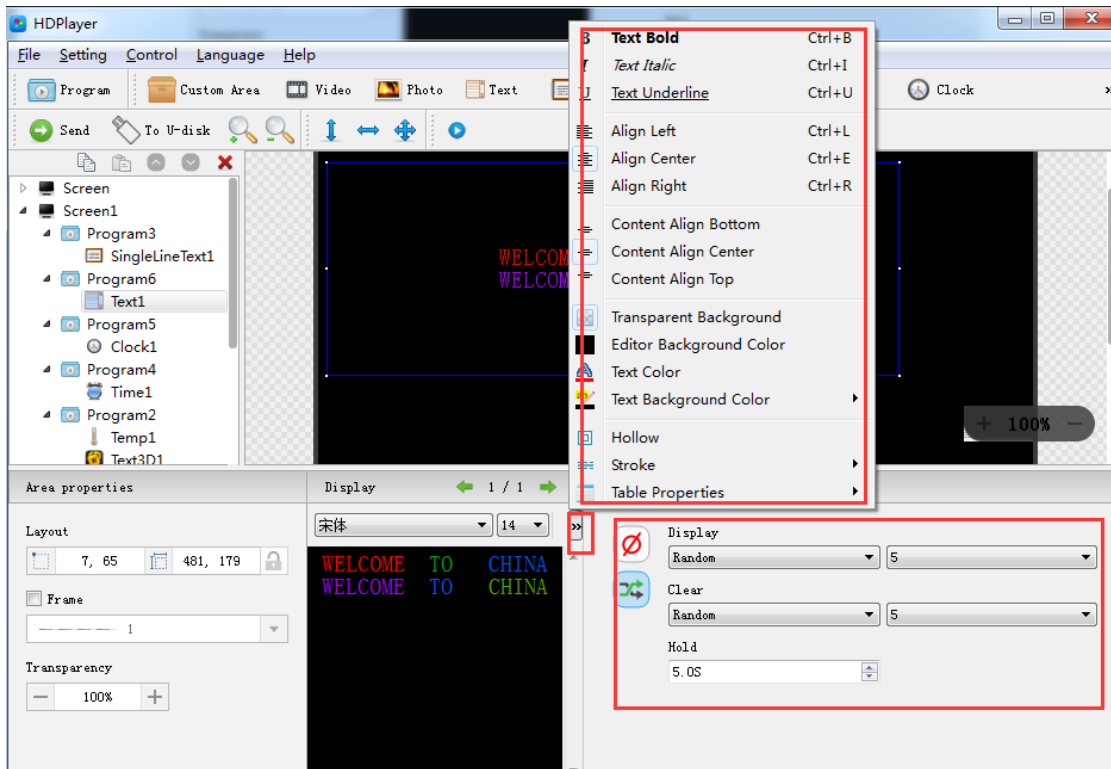


Fig. 4-14 Text attributes

It can set the text display effects (40 kinds of display and clear screen effects), display speed, the time of display and clear screen and text editing, it can also import Word, TXT, RTF and other formats of text;

5) Add Single Line Text

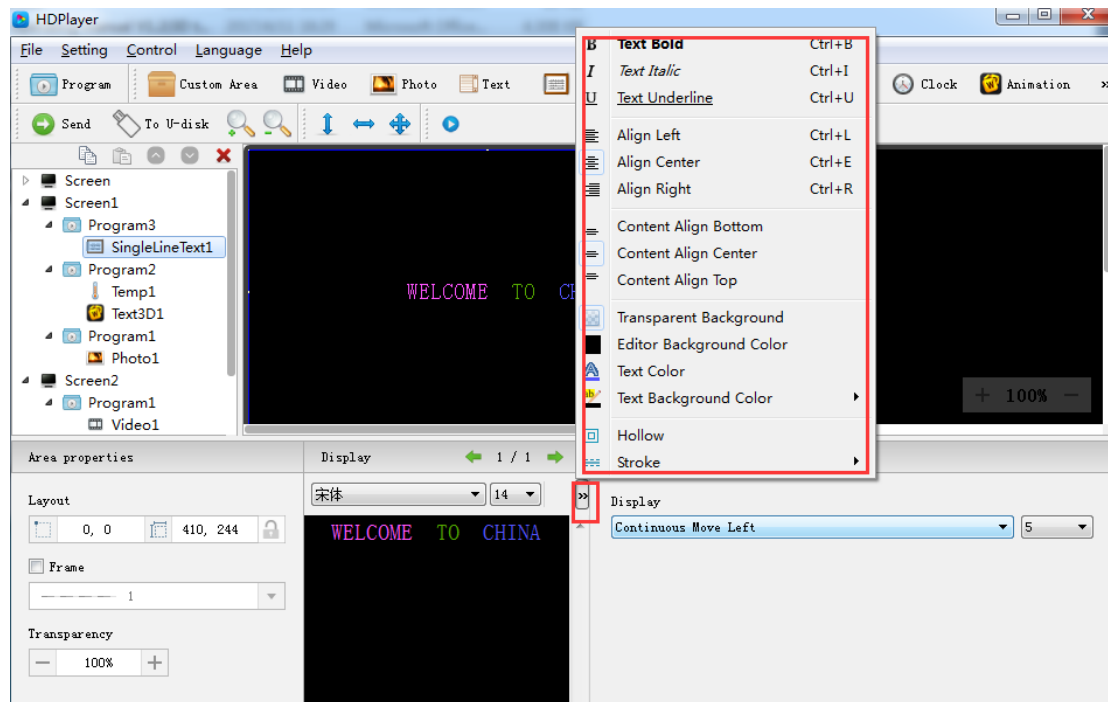


Fig. 4-15 Single Line Text attributes

Support "ordinary effects" and "continuous movement" two special effects, "ordinary effects" can set a single line text display effects (40 kinds of display and clear screen effects), display speed, the time between display and clear screen and the text edit; "continuous movement" can set continuous left or continuous right shift, whether the first connected, playback speed, playback time, playback times, etc.,

6) Add Clock

Support "analog clock" "digital clock" "picture clock" three clock types. It can set different time zones; the time can be corrected if there is a deviation. We can set description text, spacing, font type, and font size, etc.

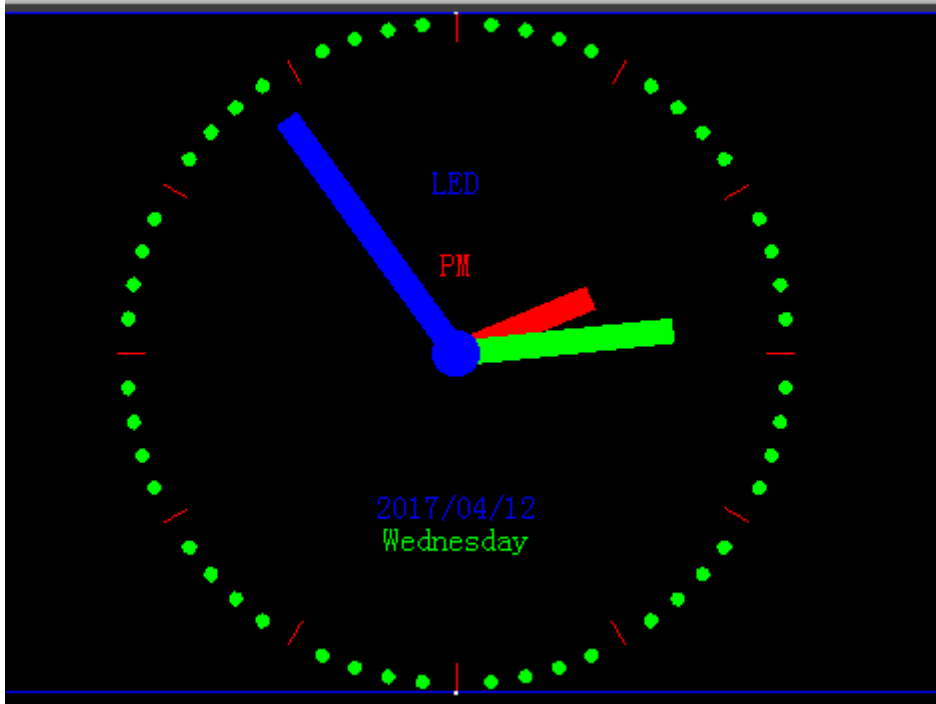


Fig. 4-16 Analog clock display

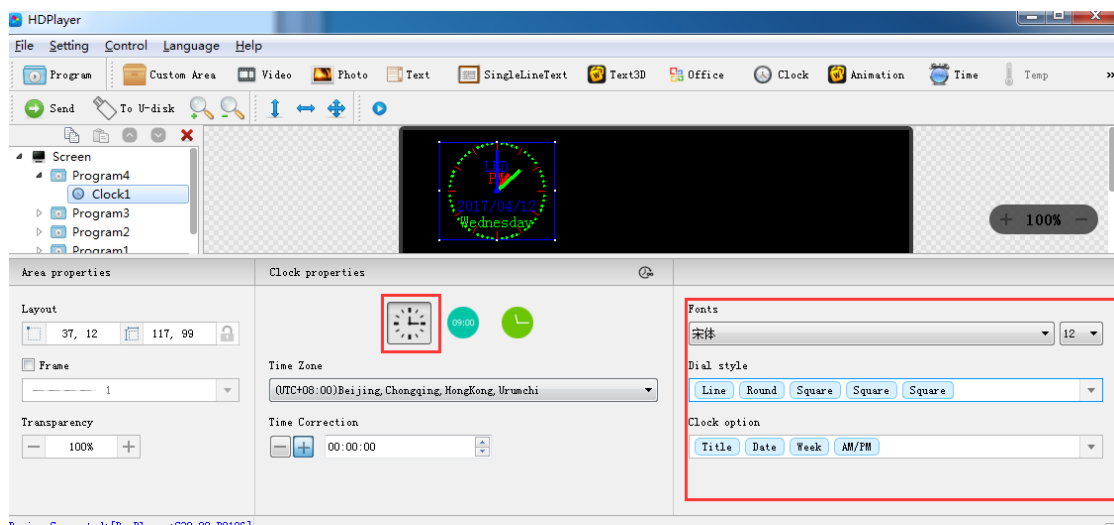


Fig. 4-17 Analog clock attribute

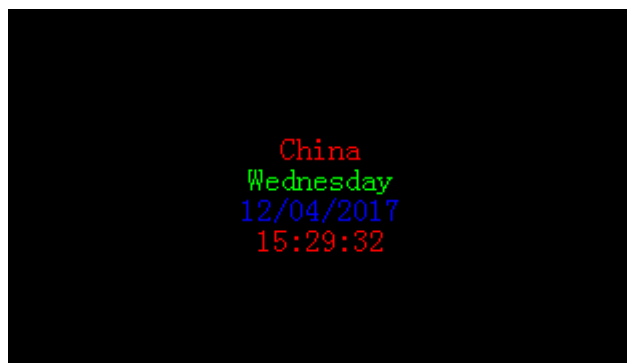


Fig. 4-18 DIGITAL CLOCK DISPLAY

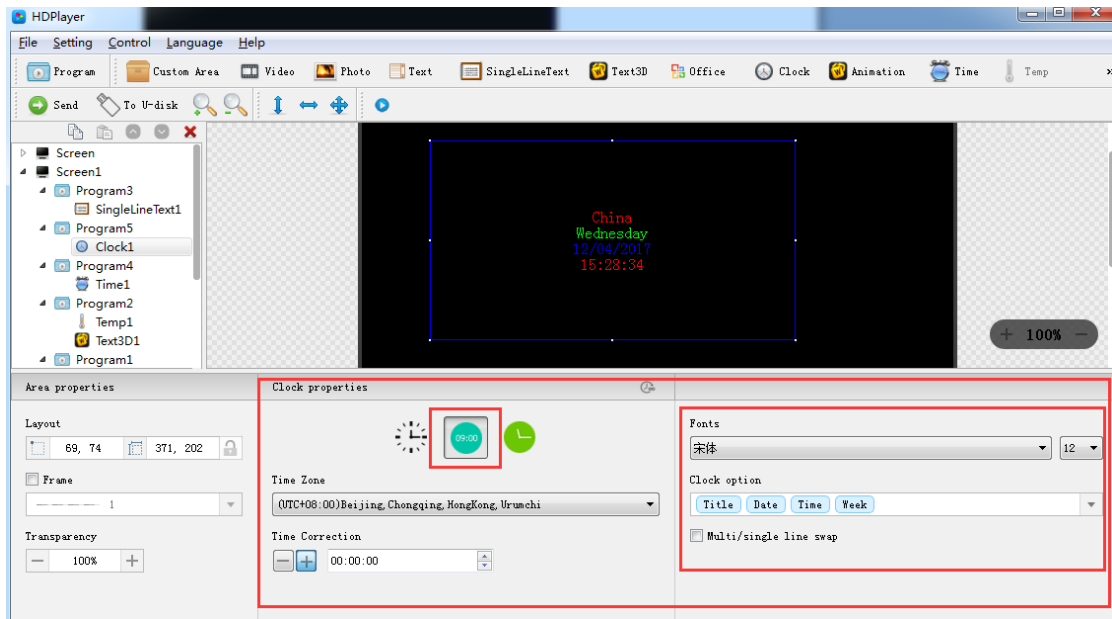


Fig. 4-19 DIGITAL CLOCK ATTRIBUTES



Fig. 4-20 PICTURE CLOCK DISPLAY

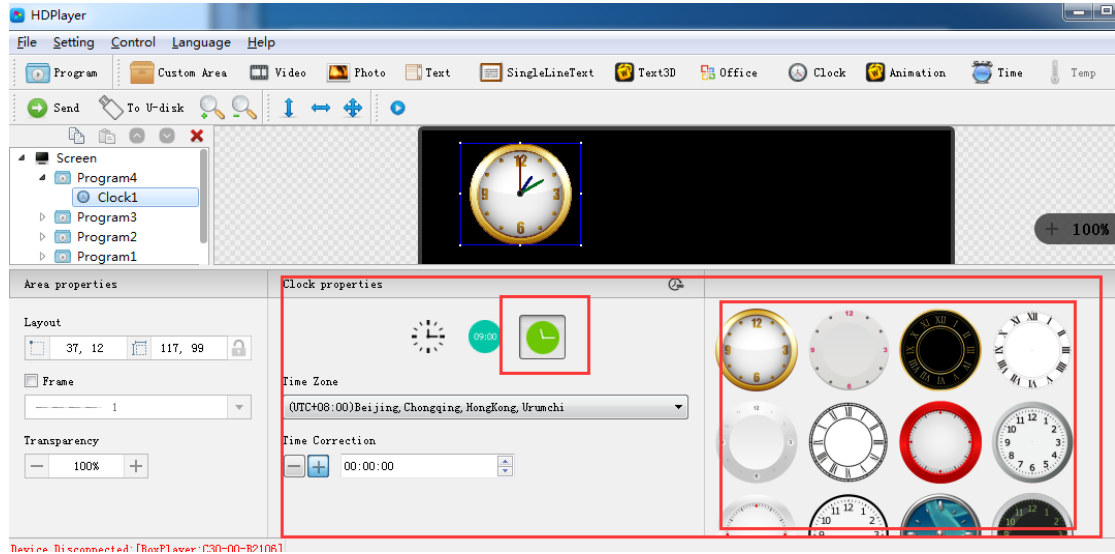


Fig. 4-21 PICTURE CLOCK ATTRIBUTES

7) Add Timing

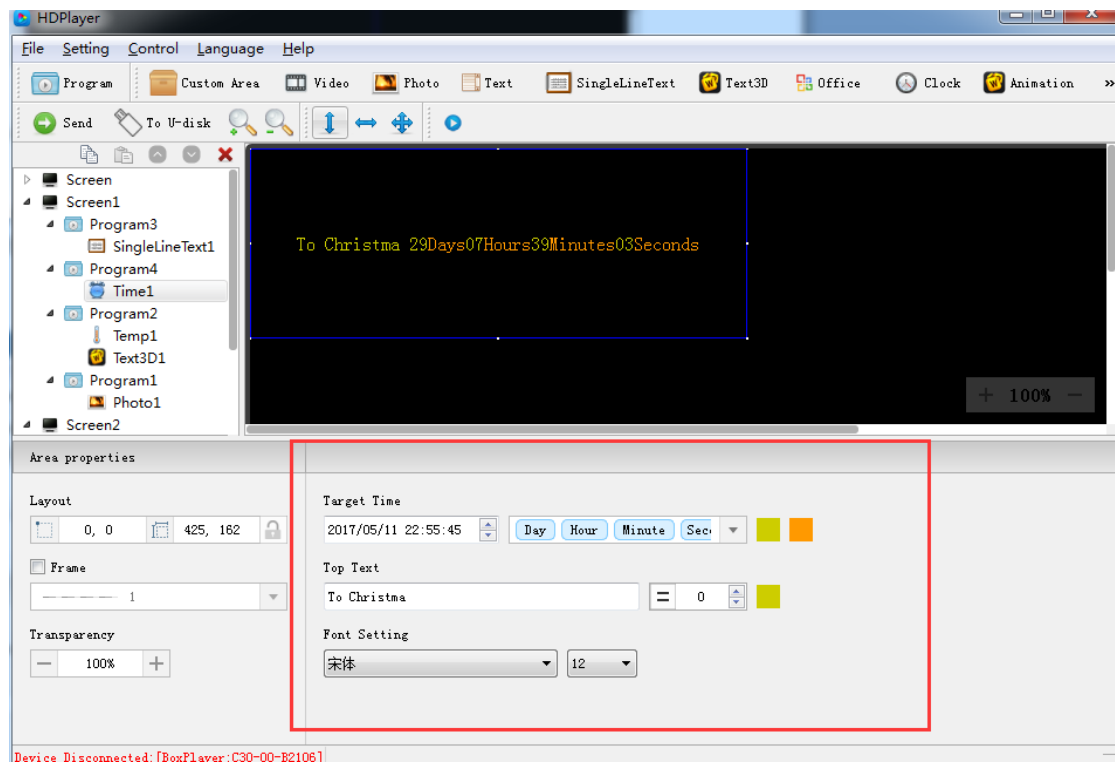


Fig.4-22 Time attributes

We can set timing mode, display mode, goal time, spacing, font type, font size, color etc.

8) Sensor

We can set the font size, color, temperature unit, etc.

In the sensor type, you can choose temperature, humidity, brightness, PM2.5, PM10, wind direction, wind speed and noise.

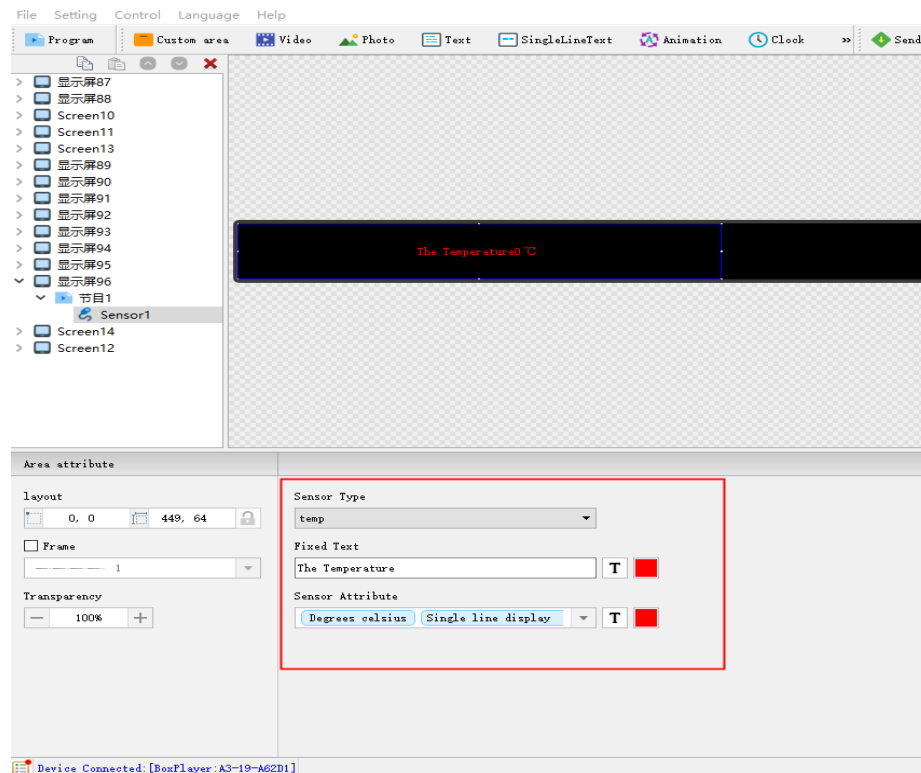


Fig.4-23 Sensor attributes

Note: To use this function, sensor accessories must be added

9) Animation characters Attributes

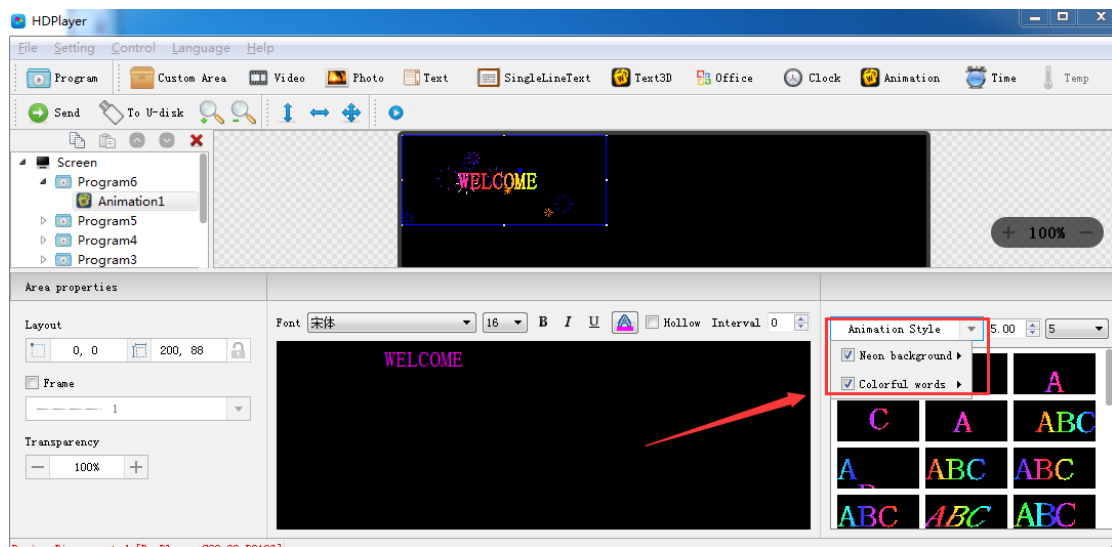


Fig.4-24 Animation characters Attributes

Support setting the font description, font color, font special effect, special effect speed etc.

10) Neon Attribute

Neon is generally used as a background.

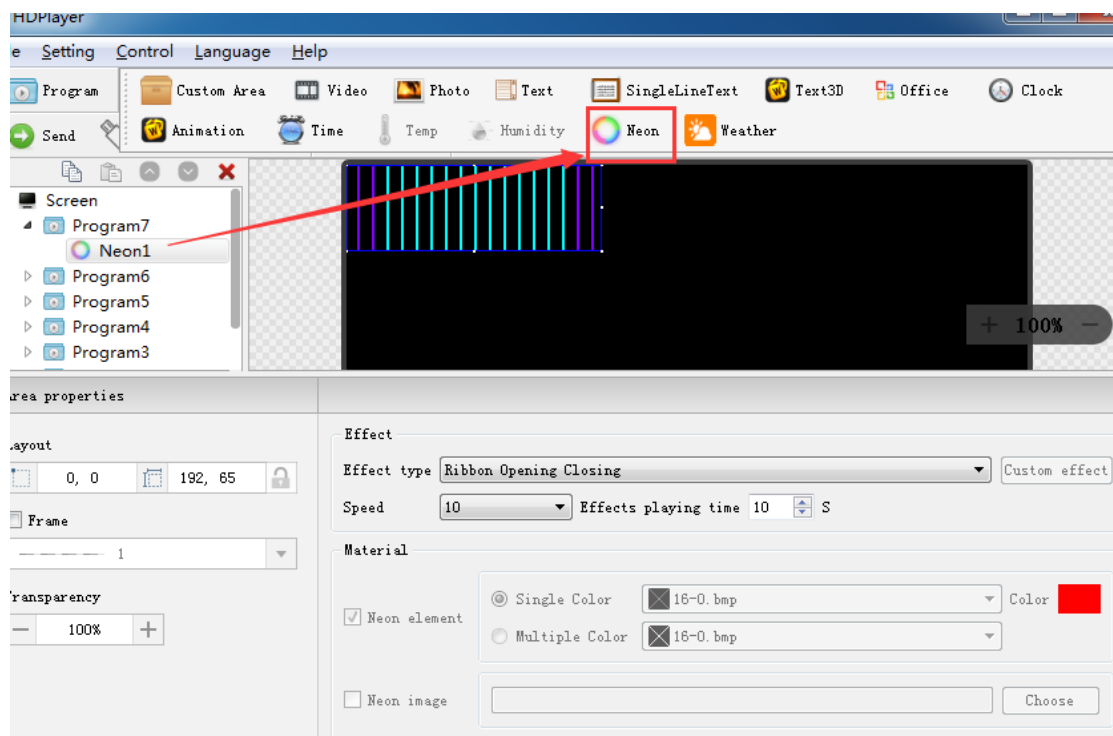


Fig. 4-25 Neon Attribute

11) Add 3D Text

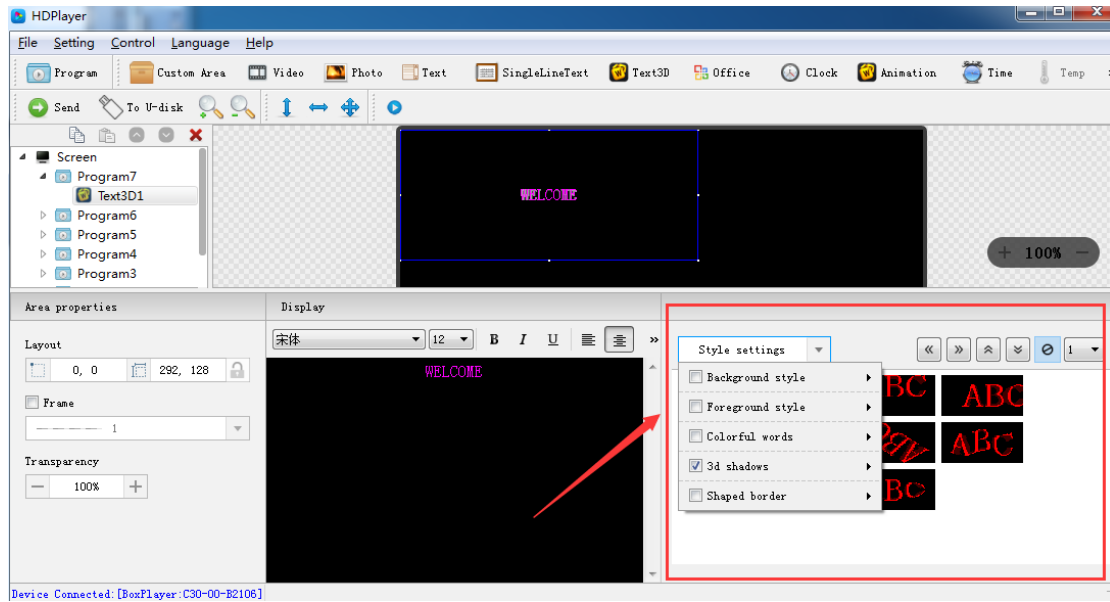


Fig. 4-26 3D Text Attribute

12) Add Weather

To modify the weather of the city, you can modify it in the weather attribute. You can set the font and display style of the weather in the weather attribute.

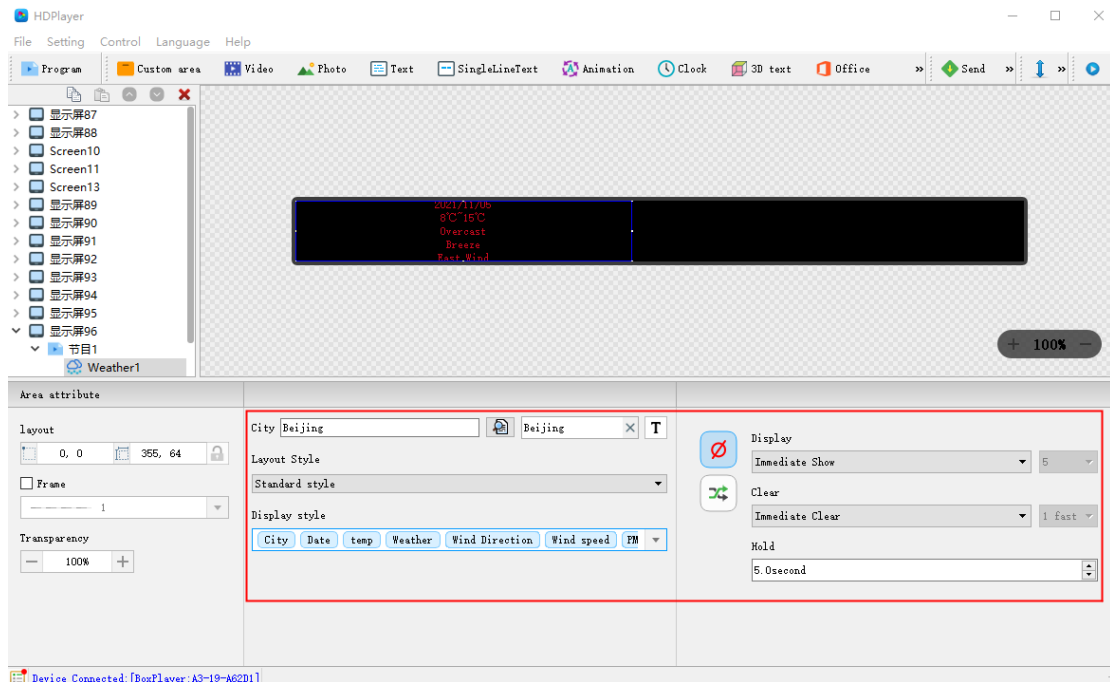


Fig. 4-27 Weather Attribute

Note: To display weather information, the control card needs to be provided with a network.

13) HDMI IN (Only supported by synchronous/asynchronous play box)

Add an HDMI IN area, connect to HDMI, this area can display the synchronized picture. In this way, synchronous/asynchronous pictures can be played at the same time, that is, the advertisements are played together without delay watching the live broadcast.

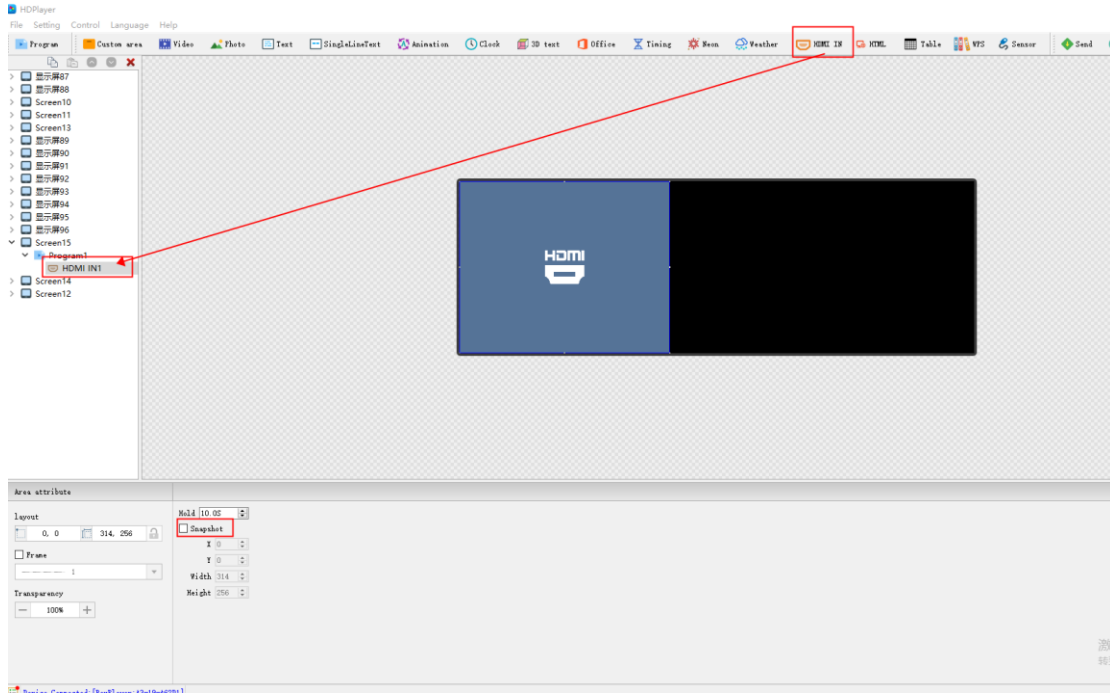


Fig. 4-28 HDMI IN Attribute

14) HTML (Only supported by synchronous/asynchronous play box)

Provide available HTML links, and the screen can display the content of the HTML links;

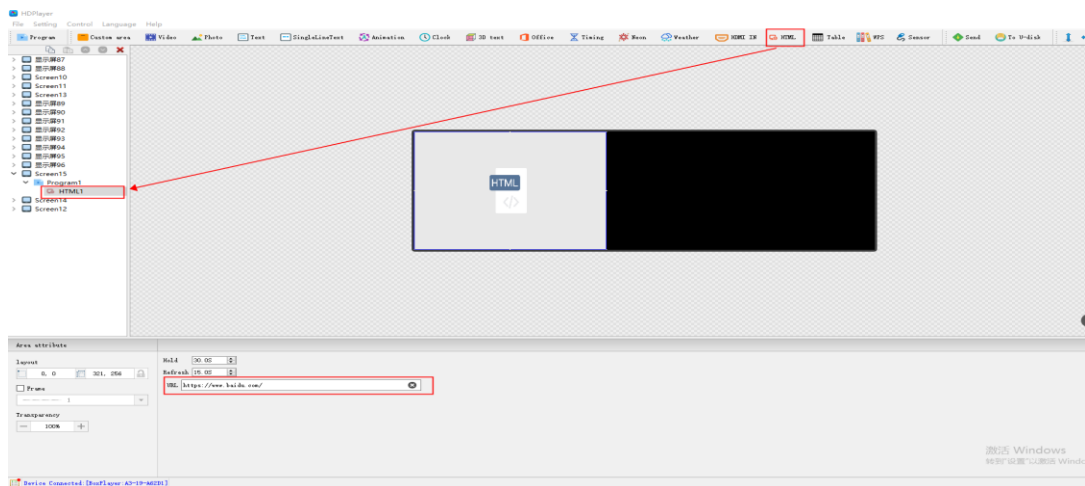


Fig. 4-29 HTML Attribute

Hold: HTML staying display time; (if there is only one program, no matter how many seconds is set, it will always be displayed)

Refresh: The time to get data from the HTML link; (such as setting 15 seconds, that is, the data will be obtained from the HTML link every 15 seconds)

15) Add table

After adding a table, you can set the number of rows and columns of the table. Select the cell, you can also modify the width/height of the cell individually.

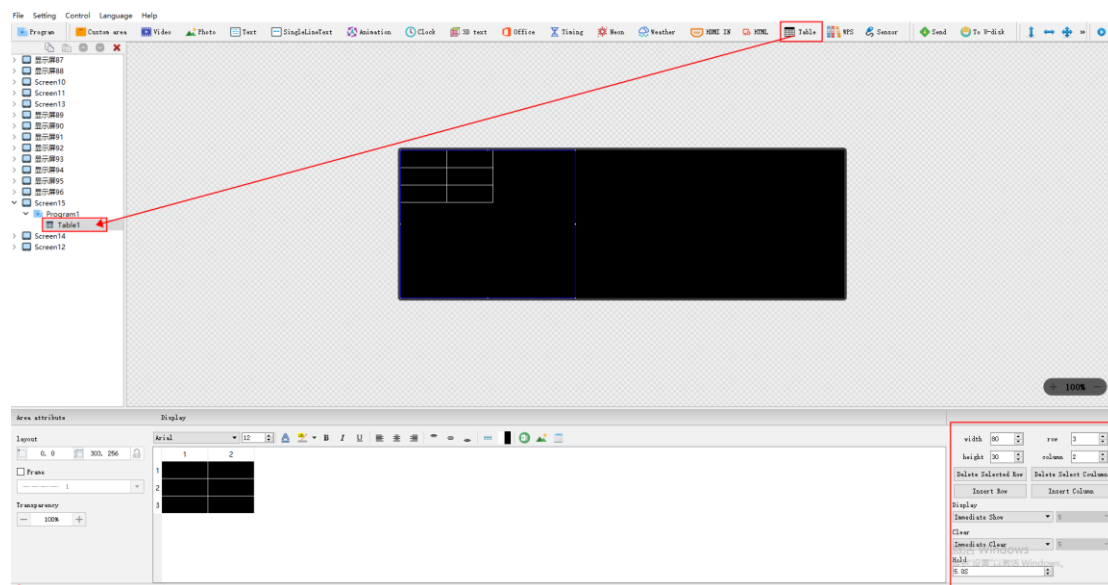


Fig. 4-30 table Attribute

16) WPS

After the computer installs WPS2019 Professional Edition, it supports adding word, excel and PPT files

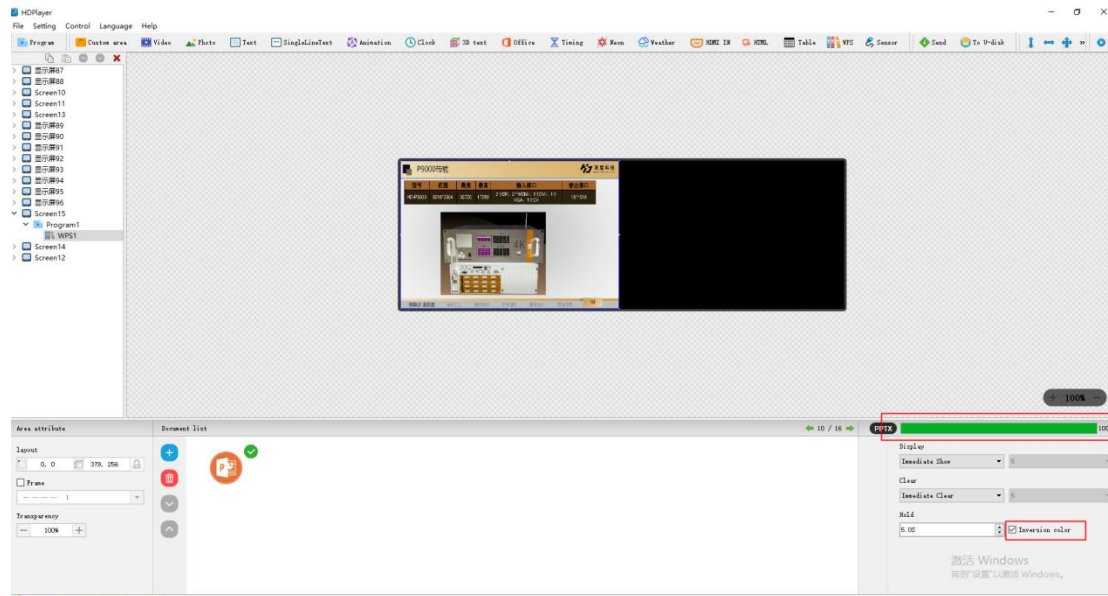


Fig. 4-31 WPS Attribute

Note: After the document is imported, the default is to check the "Inversion color", that is, the black font in the document will display white, and the red font will display cyan; if you want to display the original color of the text, remove the ✓ of "Inversion color".

7. Program Preview & Save

1) Program Preview

After finishing editing program, click  to play, click  to pause, and click  to stop

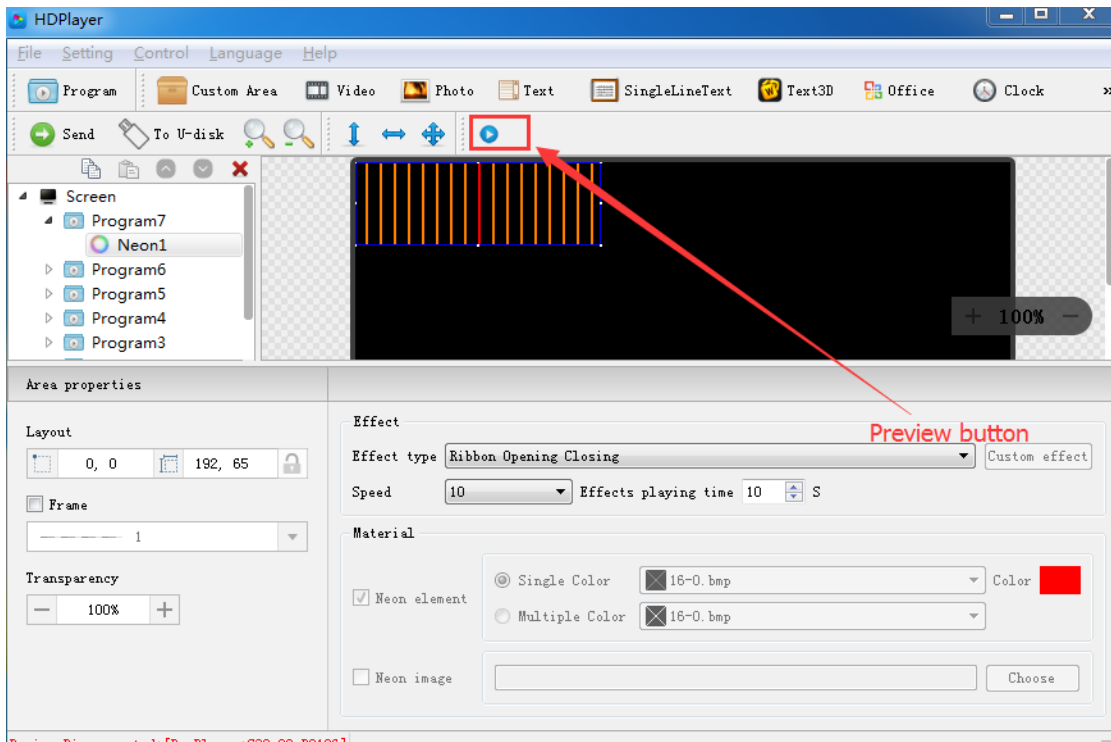


Fig. 4-32 Program Preview

Play: Program could not be edited while the screen is under a loop playback;

Pause: Program could not be edited while the screen is on pause status.

Stop: Screen will display the contents before operating, back to editing status.

2) Program Saving

Choose **【File】** → **【Save】**, or press “Ctrl” and “S”, edited program will be saved on a default file named work, file name will be “screen name. boo”, users can choose **【File】** → **【Open】** for using.

Choose **【File】** → **【Save as】**, users can choose the saving location and set the file name, and then open to use at next time.

8. Save the screen file as

Select [File]→[Save As] in the menu bar to export the currently edited display screen file to a custom path for use in a different computer next time.

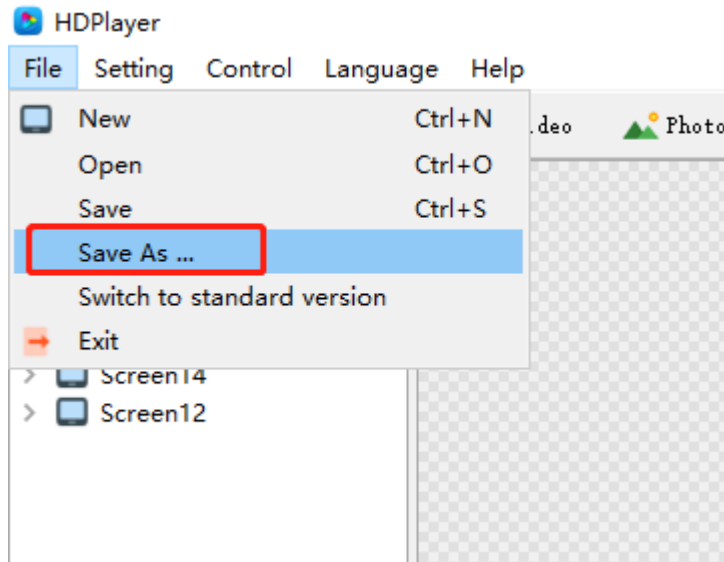


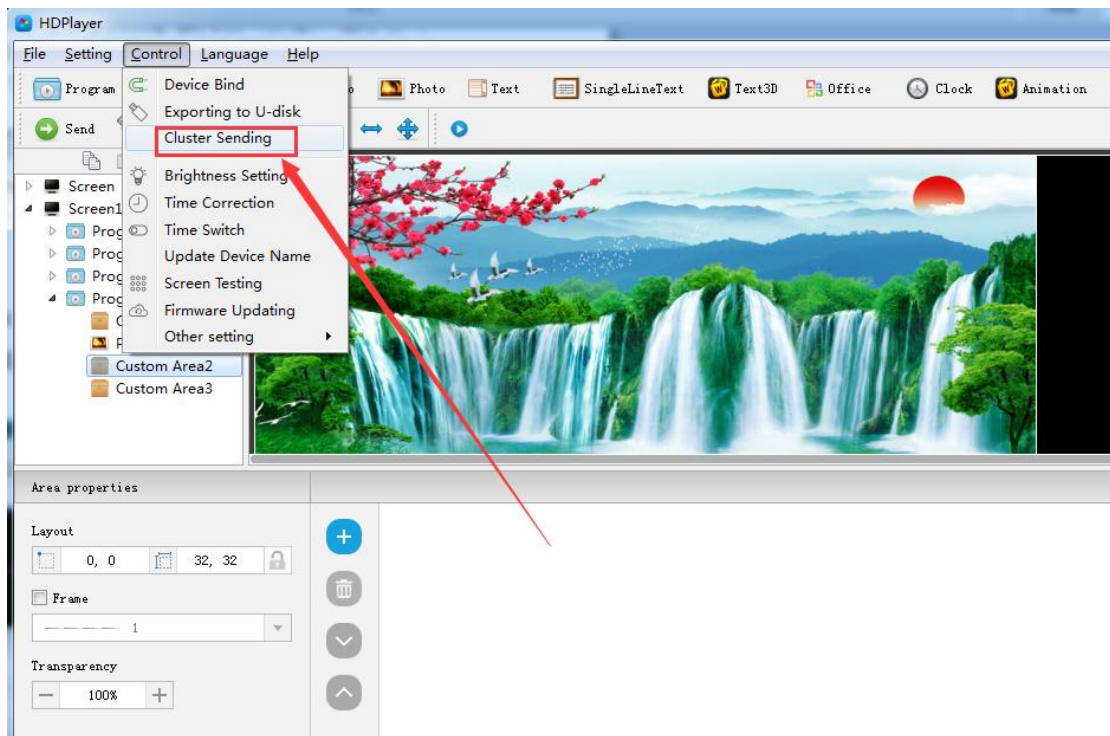
Fig. 4-33 Save the screen file as..

Chapter 5 Program Update

After finishing editing, the contents can be sent to the screen and will be showed on screen. The control card support updating programs through network and U-Disk. Meanwhile, it supports U-disk to expand memory limitless.

1. Network Cluster sending

The current control card model is the same, the display size is the same, and the content displayed on each display is the same. You can build only one display, then click **【control】**→**【Cluster Sending】**, tick the box in front of "Device", and then click the send button.



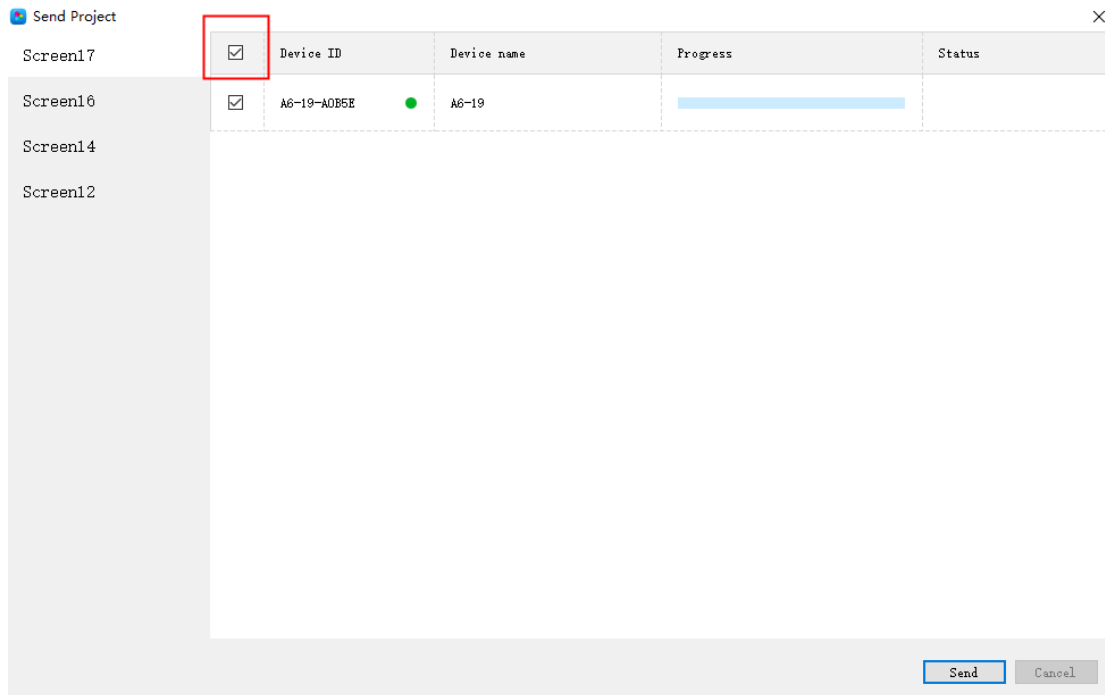
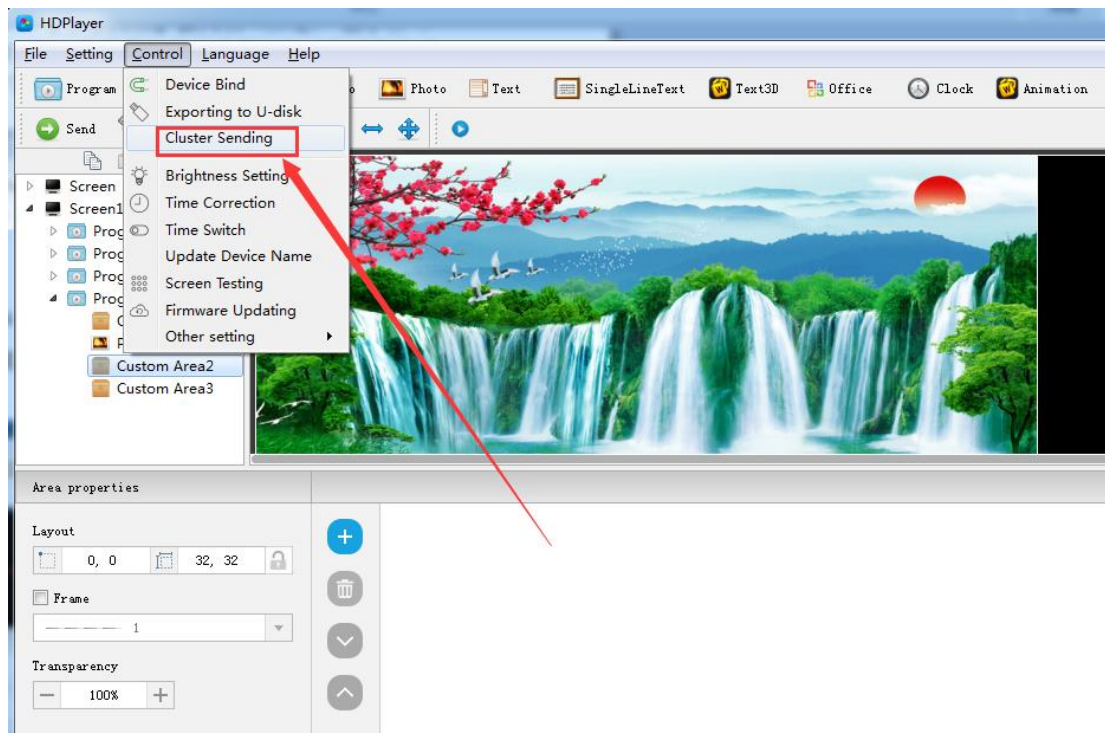


Fig. 5-1 Network Cluster sending

The current control card model is different, the size of the display screen is different, and the content displayed on each display screen is different. You need to build several more display screens, then click Control→Cluster sending, check the corresponding devices, and then switch the display screens respectively. , Click the send button.



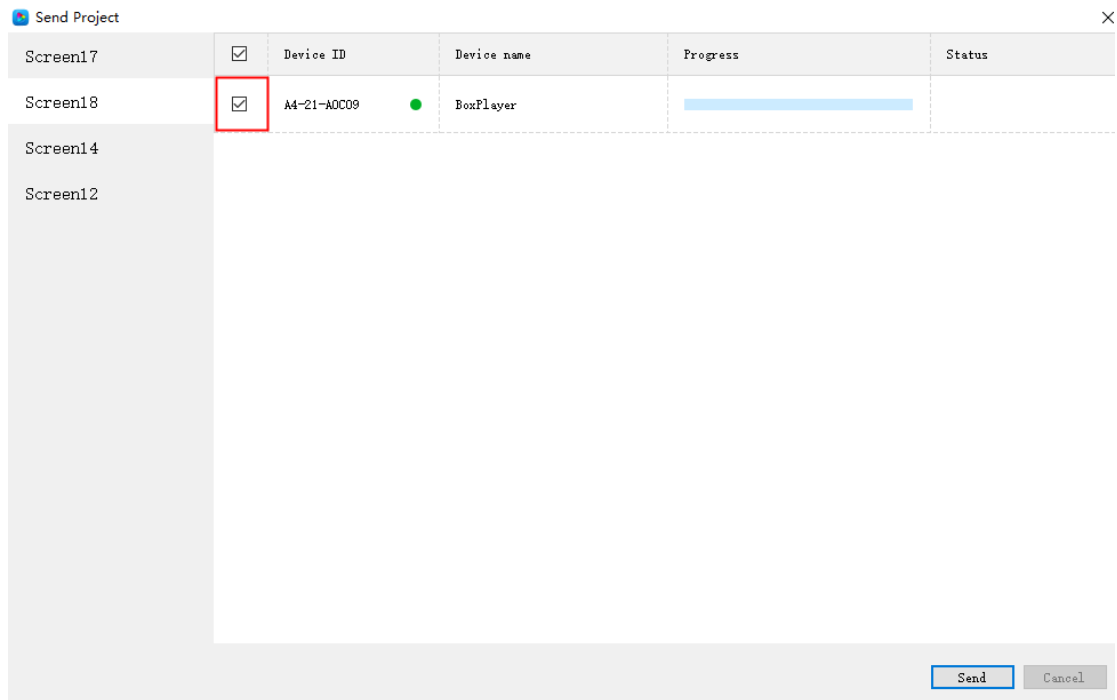


Fig.5-2 Network Cluster sending

2. Update program by U-Disk

Plug U-Disk into PC, click **【control】->【export to U Disk】** or click **Export to U-Disk** on tool bar, choose “Update Program”, programs will be exported into U-Disk.

Plug U-Disk into control card, program on U-Disk will be copied to the card’s storage board; screen will come out the tips.

Take away the U-Disk after copy. Screen will display the new program. Repeat same operation when renew program.

USB extension cable should be within 5m.

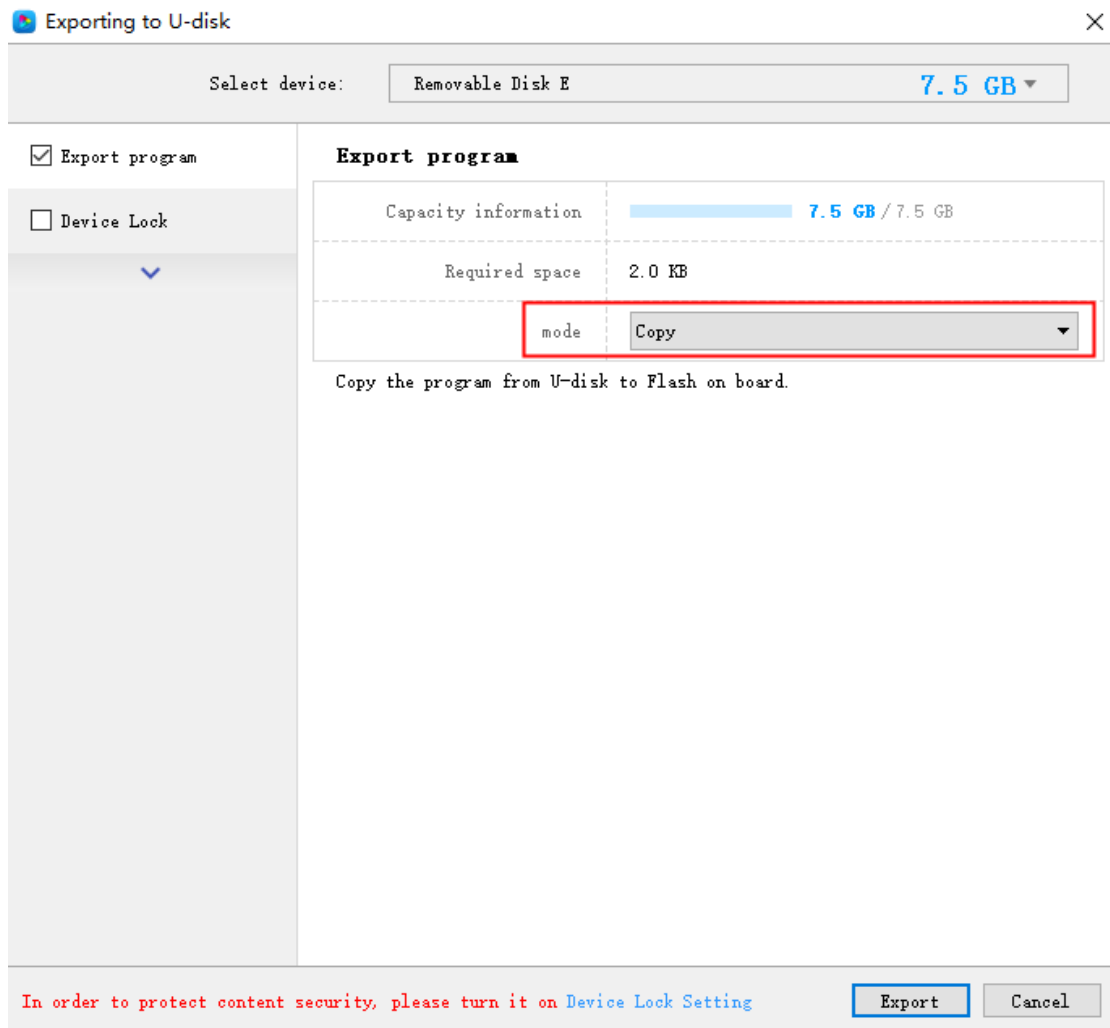


Fig. 5-3 Update program by U-Disk

3. U-Disk expand memory Limitless

Choose “Display” after exporting program to U-Disk. Control card will display contents on U-Disk after inserting U-Disk into card. (No need to restart computer, program will begin display once inserting U-Disk into card). By this way, users can extend programs contents according to memory of U-Disk.

5m USB extension cable also support for U-Disk Display.

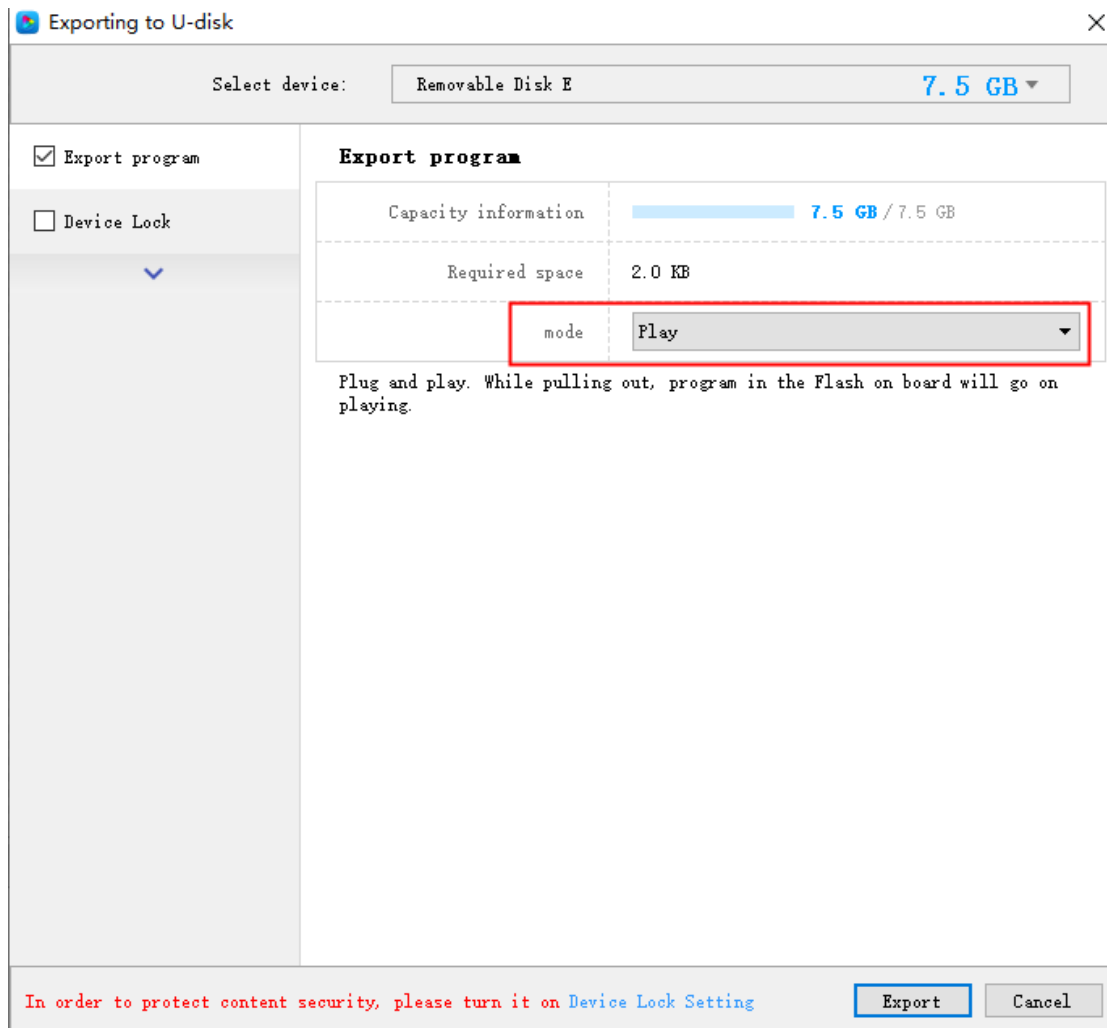


Fig. 5-4 U-Disk expand memory Limitless

In addition, insert the U disk into the control card, and the network cable transmission program will be sent to the U disk. The size of the plug-in U disk can be used to send programs.

4. Device lock setting

After the device turns on the device lock, using the USB flash drive to update the program will prompt "device is locked", you need to enter the password in the software "Export USB flash drive" interface, enter the password for the device lock option, and then click Export to update the program.

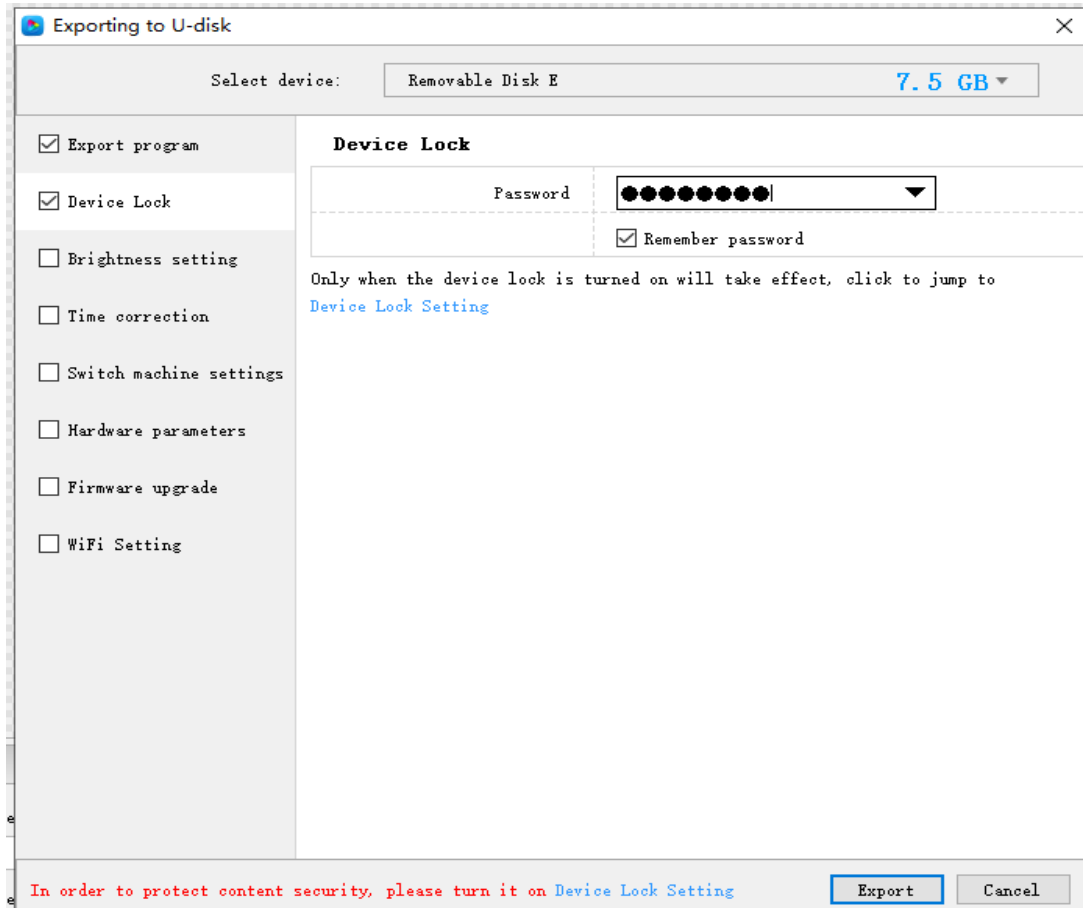


Fig. 5-5 Device lock interface

5. Brightness setting

The export U disk interface can adjust the brightness of the device. There are three modes of brightness adjustment that can be adjusted manually, adjusted by time period, and automatically adjusted (you need to add a brightness sensor).

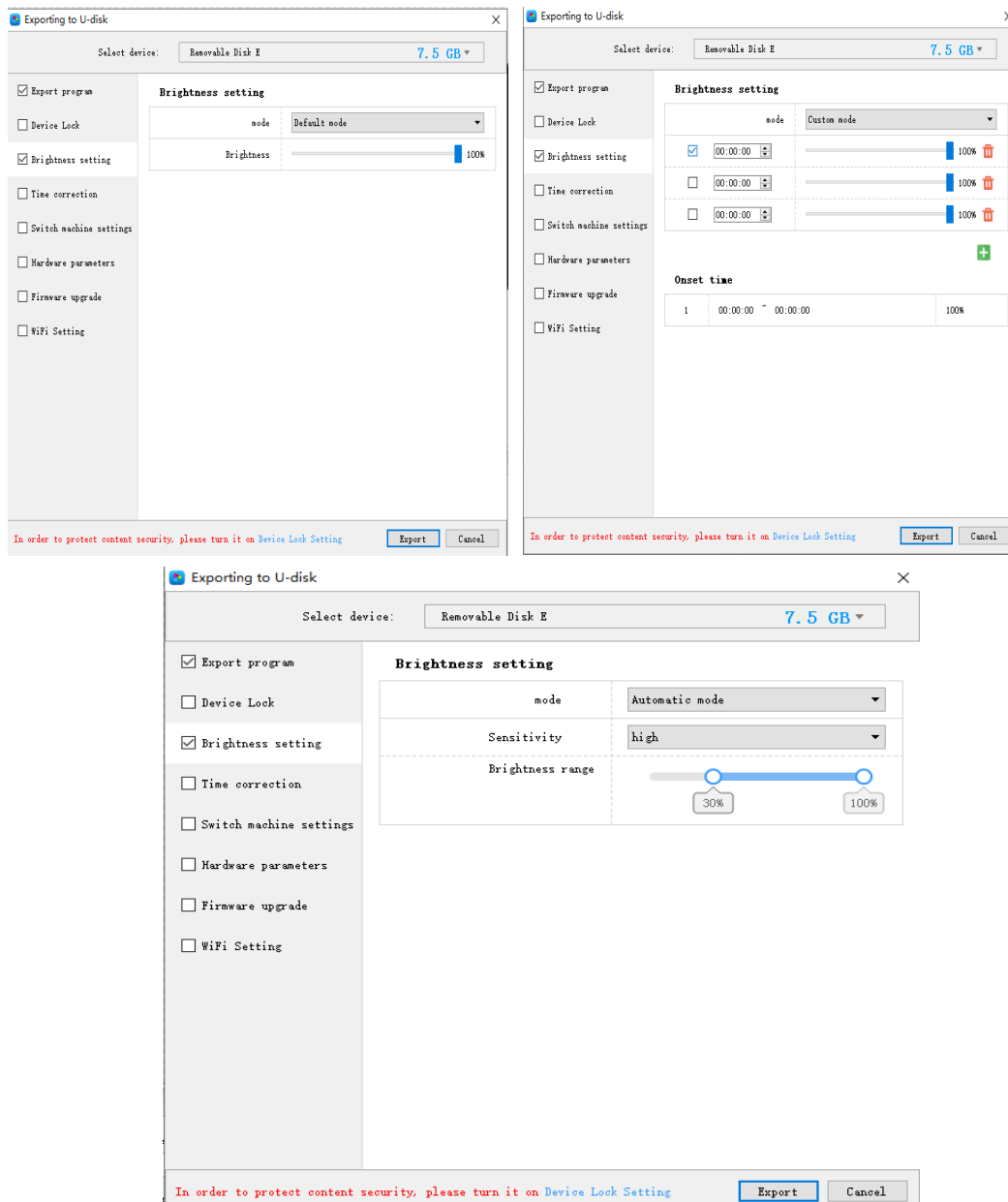


Fig. 5-6Brightness setting interface

6. Time correction

The time displayed on the current display is not accurate. You can adjust it in the export USB flash drive interface, and then export it to the USB flash drive.

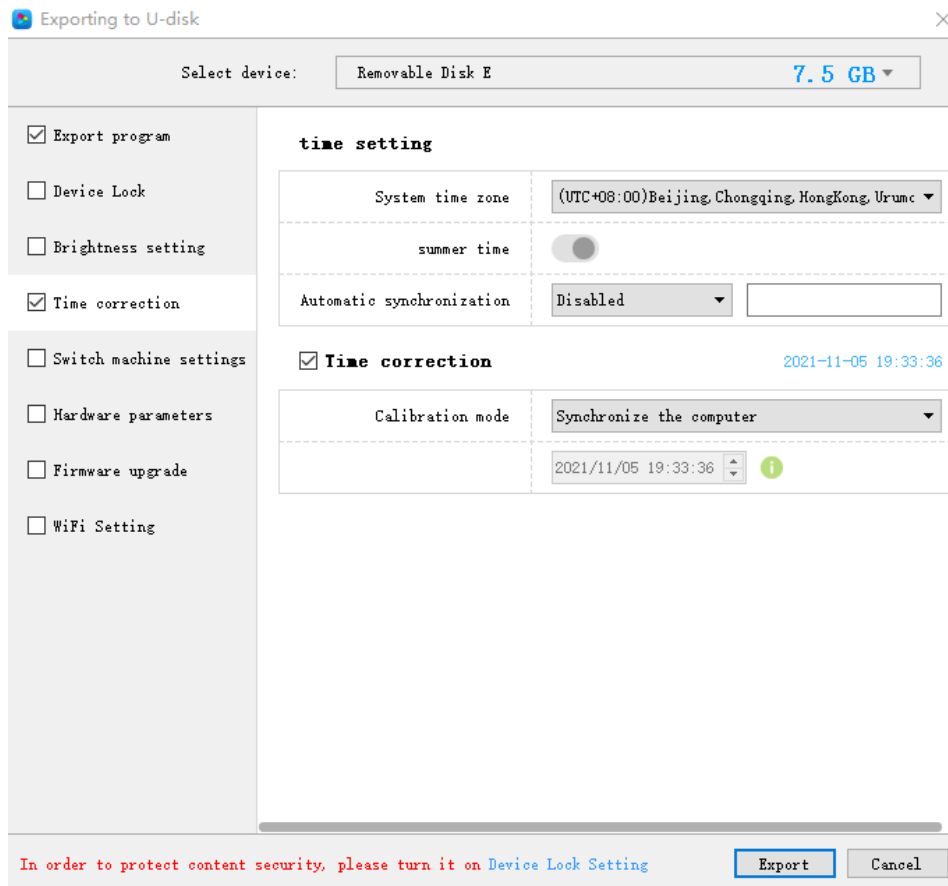


Fig. 5-7time correction

7.switch machine setting

Set the timing switch to make the control card black screen or play the program within the specified time

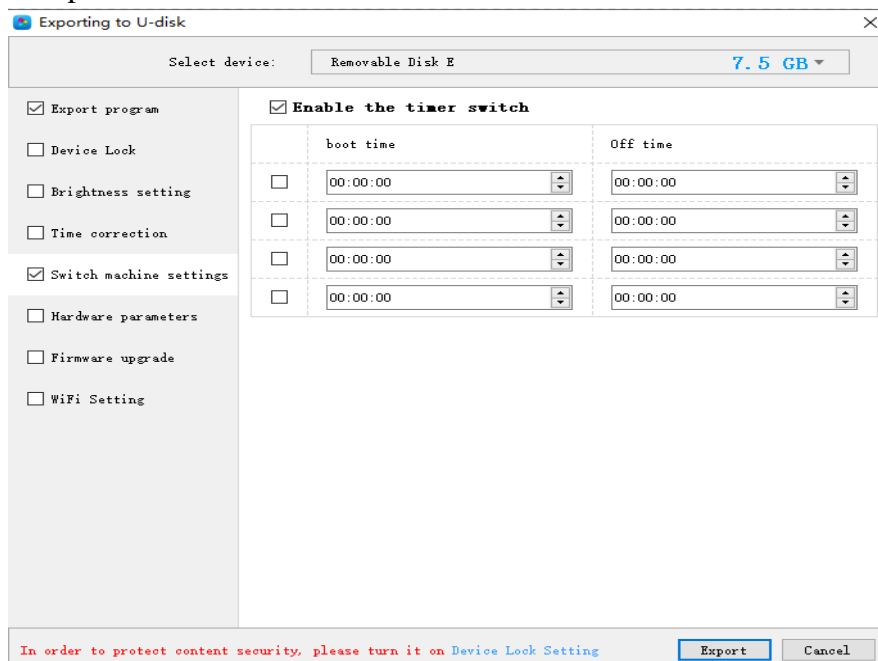


Fig. 5-8 switch machine setting

8. Hardware parameters

The current display shows garbled characters. You can export the configuration file of the same type of module that was previously set up intelligently through a U disk, and then insert it into the control card for adjustment.

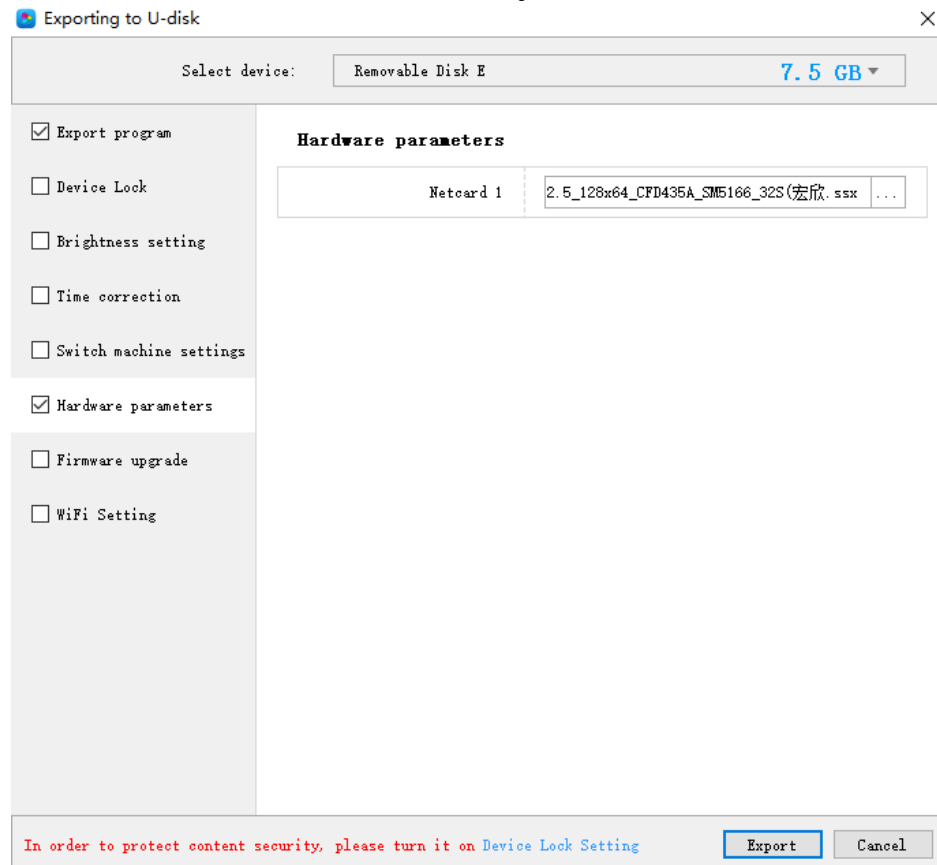


Fig. 5-9 hardware parameters

9. Firmware updating

If you encounter special chip debugging or newly added functions that need to be upgraded, you can upgrade the firmware through the U disk to upgrade the version of the control card. During the upgrade process, the power cannot be cut off, and the U disk cannot be plugged or unplugged.

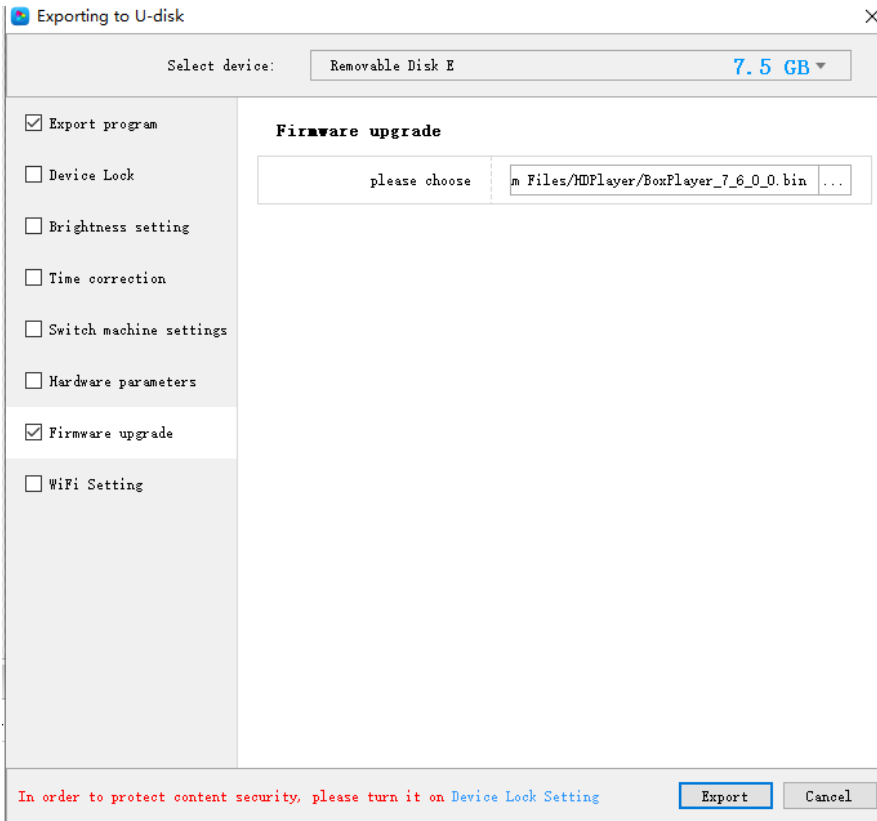


Fig. 5-10 firmware upgrade

10. Wi-Fi setting

When the Wi-Fi module is installed on the control card, you can set the Wi-Fi password, SSID, IP address, etc. in the AP mode of the control card in the export U disk "Wi-Fi" setting interface.

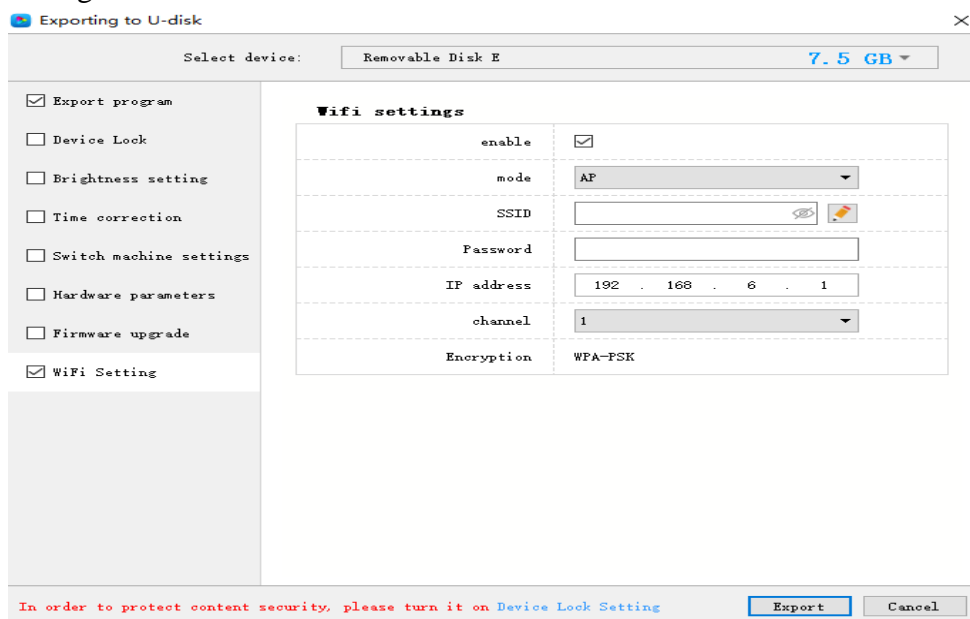


Fig. 5-11 Wi-Fi setting

Chapter 6 System Setting

Click **【setting】** -> **【system setting】** , it has save warning, delete warning, Display Frame Topmost,use password and other settings.

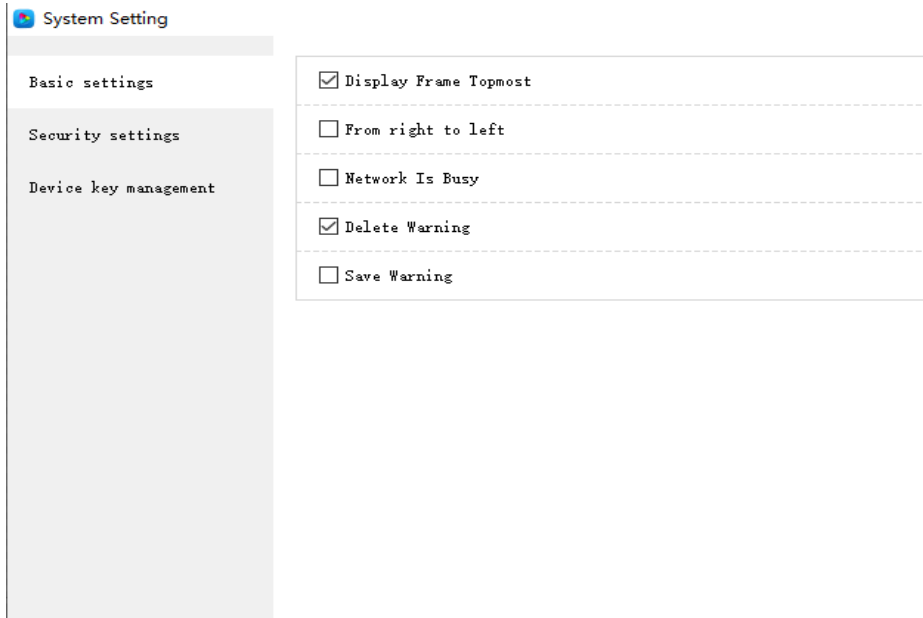


Fig. 6-1 system setting

Saving warning:

When tick it, saving warning will pop out when exit the software; or else, software will save automatically without warning.

Delete warning:

When tick it, delete warning will pop out when exit the software; or else, software will delete automatically without warning.;

Using password:

When tick it, users will need to input password to enter “hardware setting”、 “firmware upgrade” or cancel password; Or else, software will regard user as administrator thus no need to input password.

Default password is “168” or “888”.

Change the password:

Change the default password of the system to another password;

Display Frame Topmost :

Means that the display window is on top when previewing the playback effect

Chapter 7 System Control

System Control including “play mode setting” “Brightness setting” “Time Correction” “start-up screen” “Screen Testing” “device reboot” “Direct search by manual” “Firmware Update” “Network settings” “Cloud server setting” “Sync setting”.etc

1.play mode setting

This function is suitable for A601/A602/A603/A4/A5/A6 these synchronous and asynchronous dual-mode playback boxes. The software can be set to synchronous priority mode or manual mode.

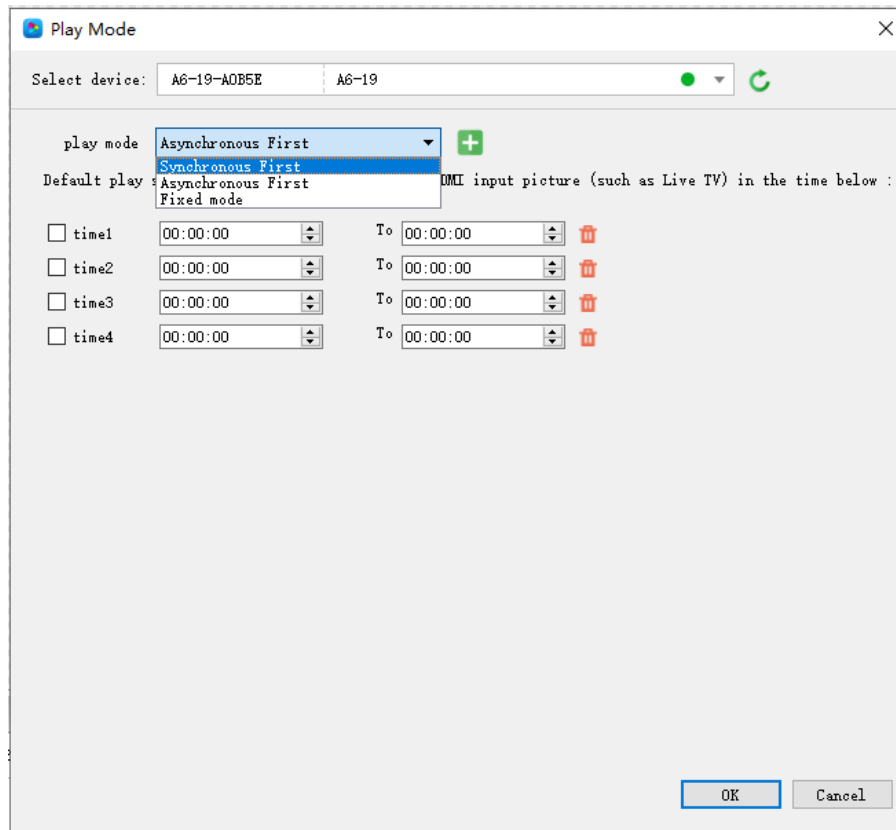


Fig. 7-1 play mode setting

2. Brightness setting

Select the ID of the control card whose brightness needs to be adjusted in the connected devices, regardless of the network port, the two network ports save the same brightness, “Got brightness successfully”, then can start setting.

Three types of brightness setting for choice: 1. Brightness setting; 2. Brightness setting according to time; 3. Brightness setting according to environment.

1) Default Brightness Adjustment

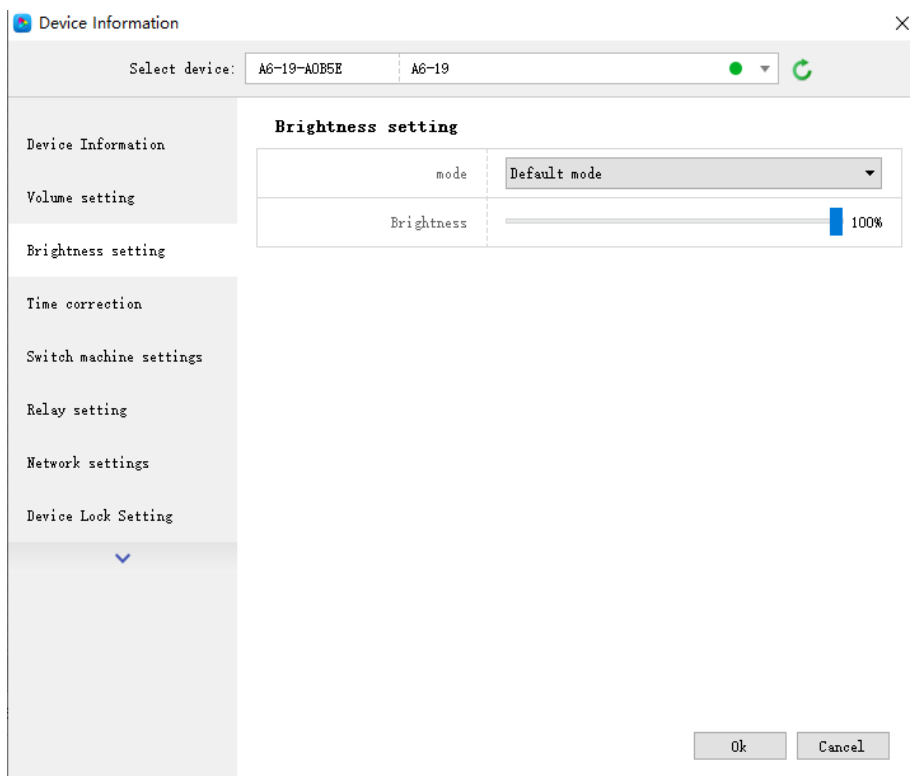


Fig. 7-2 Default Brightness Adjustment

2) Custom brightness

Tick it after setting the time and brightness and then click “ok”, on left bottom will see tip “set successfully”, it means save in controller. Choose Adding option can have multiple setting for user-defined data range. The defaults are three user-defined options.

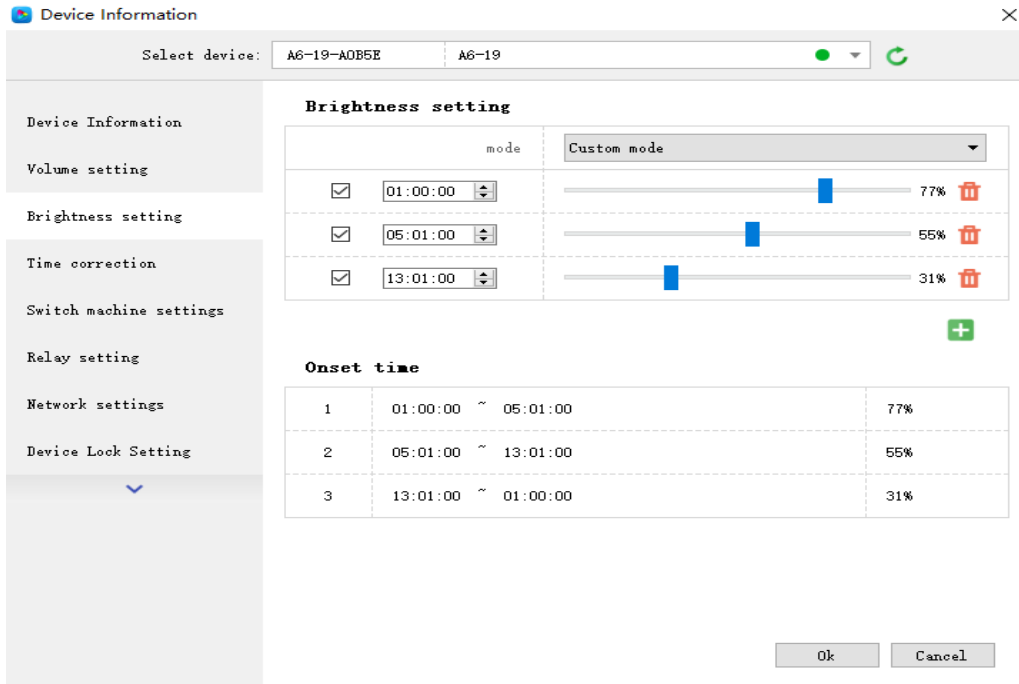


Fig. 7-3 Custom brightness

3) Automatic Adjustment

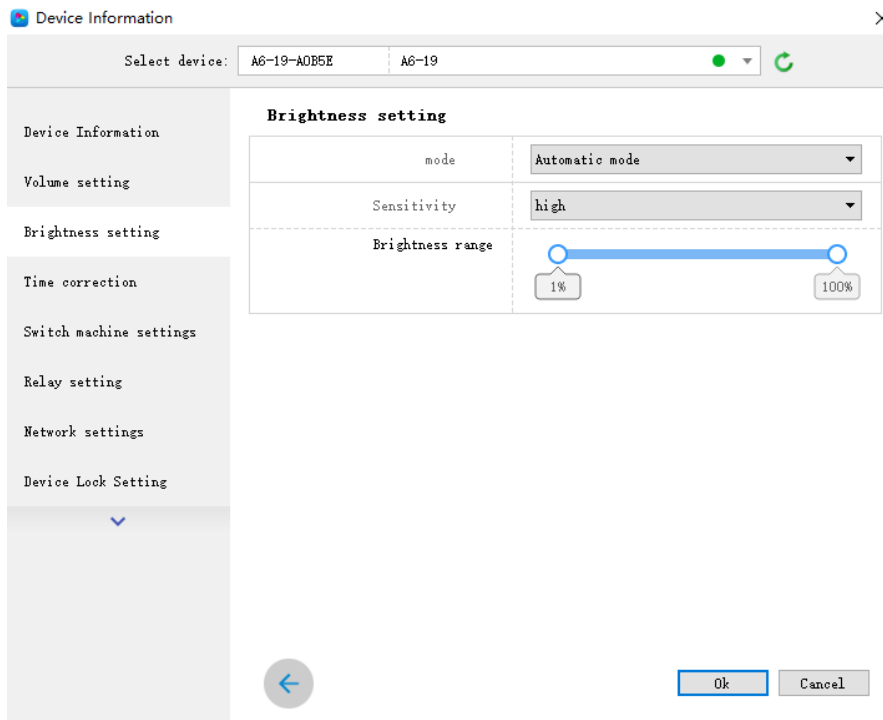


Fig. 7-4 Automatic Adjustment

Note: The brightness must have an external brightness sensor for automatic adjustment, otherwise this function is invalid.

3. Time Correction

After connecting device, choose ID of the controller that need to correct time. On left bottom will show a tip “get time successfully” then can start time correction. System will adjust time automatically according to time zones setting by computer and controller.

1) Synchronous Correction

Time will be synchronous with computer time. Choose option “OK”, on left bottom will show “Set Successfully”, means set successfully.

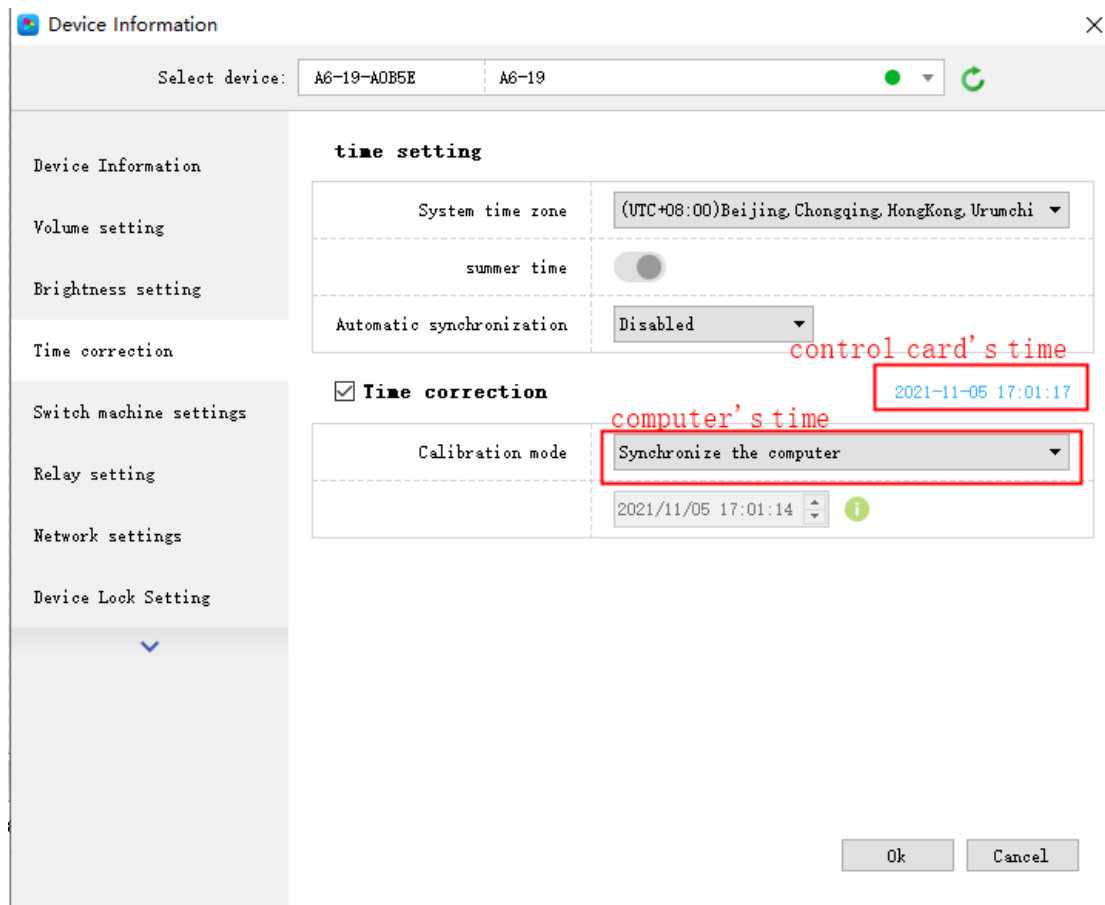


Fig.7-5 Synchronous Correction

2) Custom adjustment

Choose option “OK” after time setting, on left bottom will show “Set Successfully”, means set successfully.

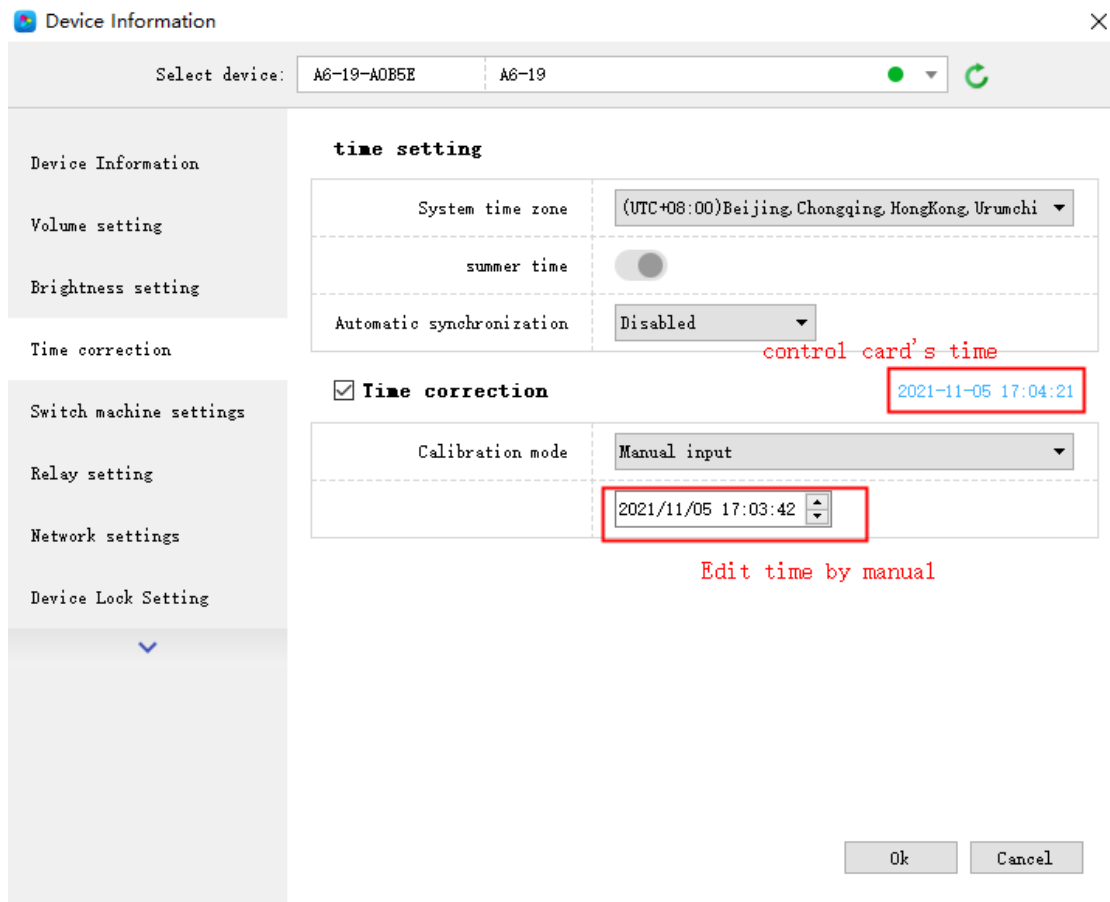


Fig. 7-6 Custom adjustment

4. Screen Testing

The system support gray scale test, color lump test, mesh test, spot test etc, so users can check lamp working situation of the screen.

Choose device ID, after see tip “connect successfully”, start screen test. Press button “TEST” (SW1) on control card to start screen test is also OK.

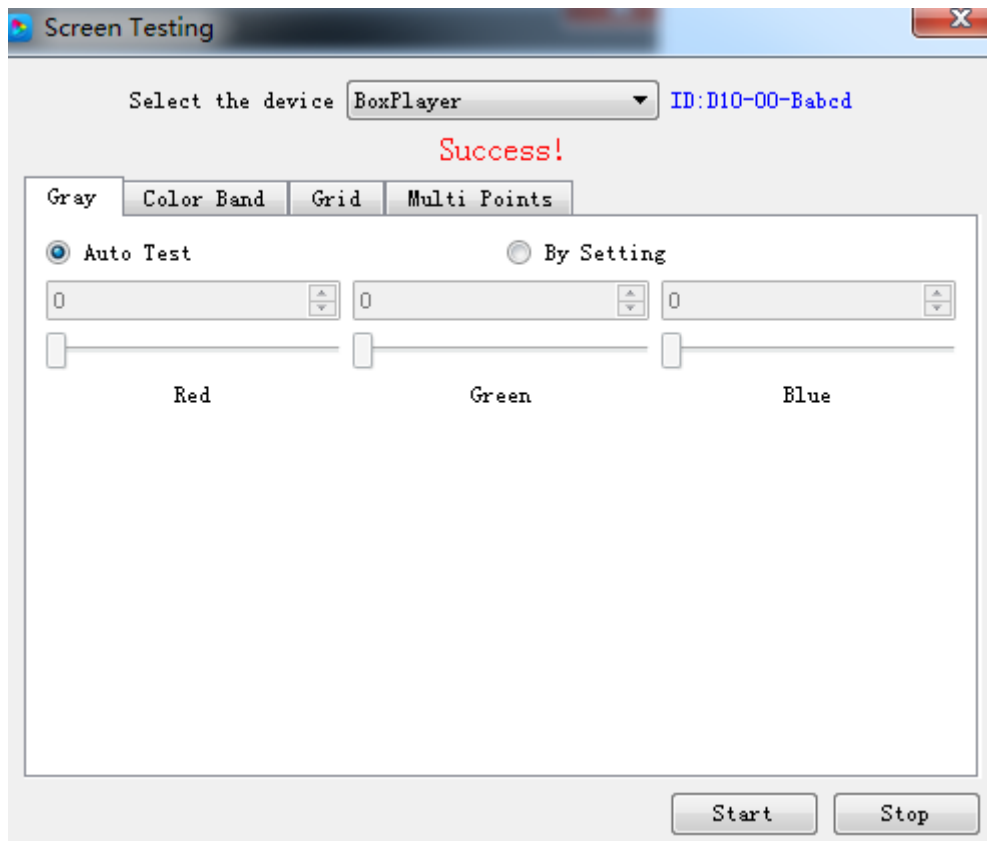


Fig. 7-7 Screen Testing

5. Firmware Update

Updating firmware, all firmware of the connected controller will be updated. Users should add new version firmware, compare its version number with the one with the connected controller, click button “Upgrade” if need to upgrade.

Whole upgrading procedure will be finished by software in backstage. After successful upgrade, users will see new firmware version, means the controller can be used normally. (Tip: do not cut off power supply for controller during update).

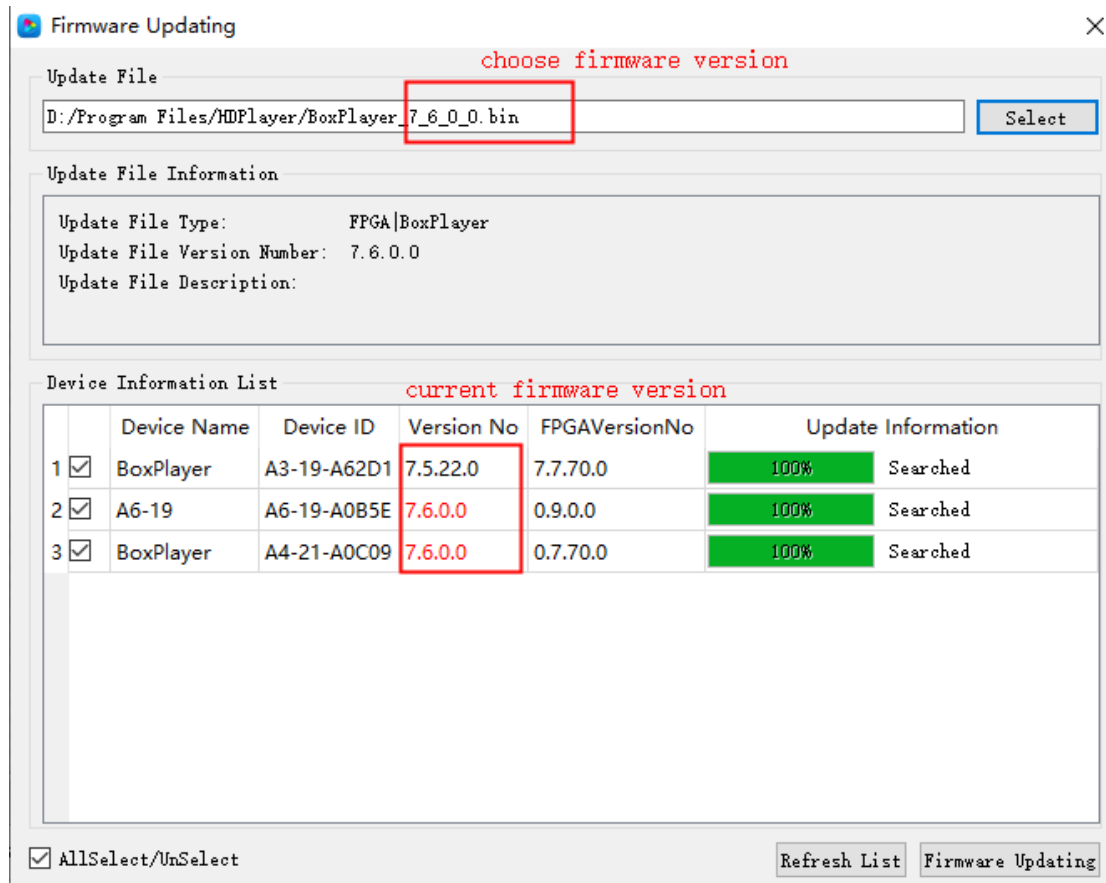


Fig. 7-8 Firmware Update

6.Switch machine settings

Setting the timer switch can make the control card black screen or play the program within the specified time, as shown in Figure 7-9. This setting only disconnects the transmission of the video signal, and the power supply in the screen is normally powered.

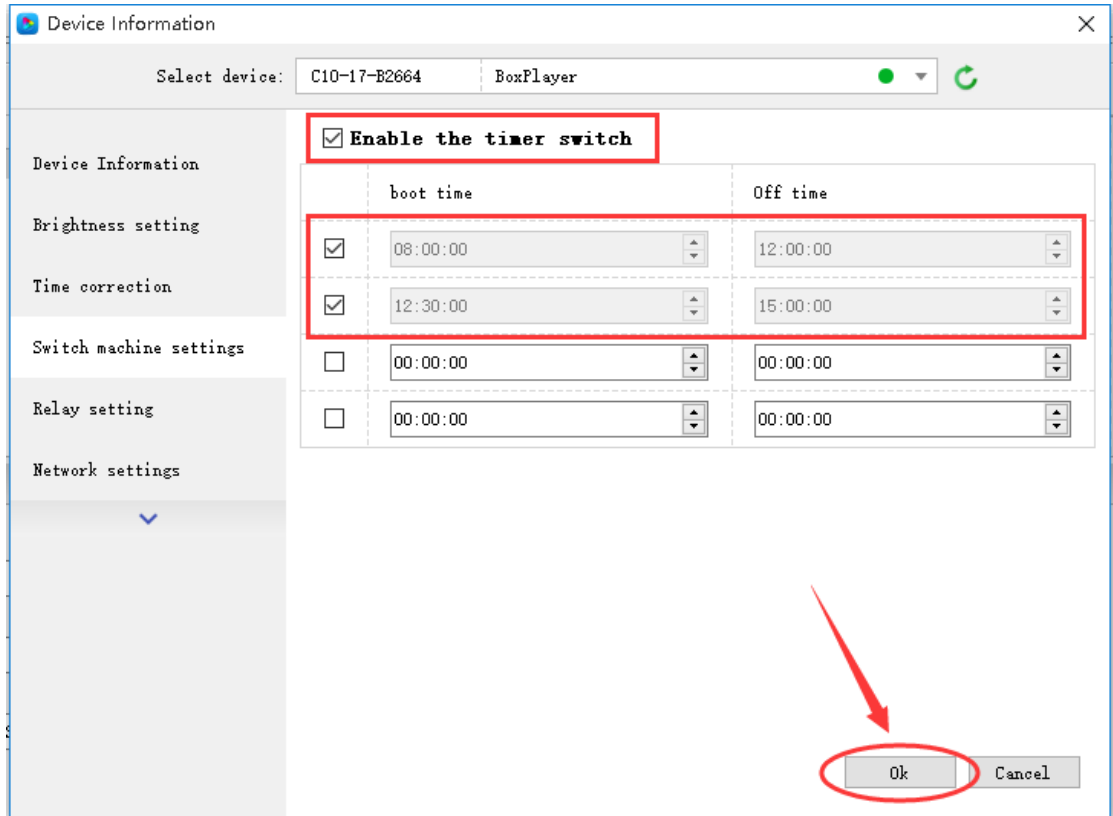


Fig.7-9 Switch machine settings

7.Update device name

In order to better distinguish the control card, you can modify the name of the control card in [Control] - [Device Rename]. The default name is BoxPlayer. As shown in Figure 7-10, select the corresponding control card ID, enter the name to be modified in the rename text input box, and then click “Update Device Information” to prompt the write success in the task status.

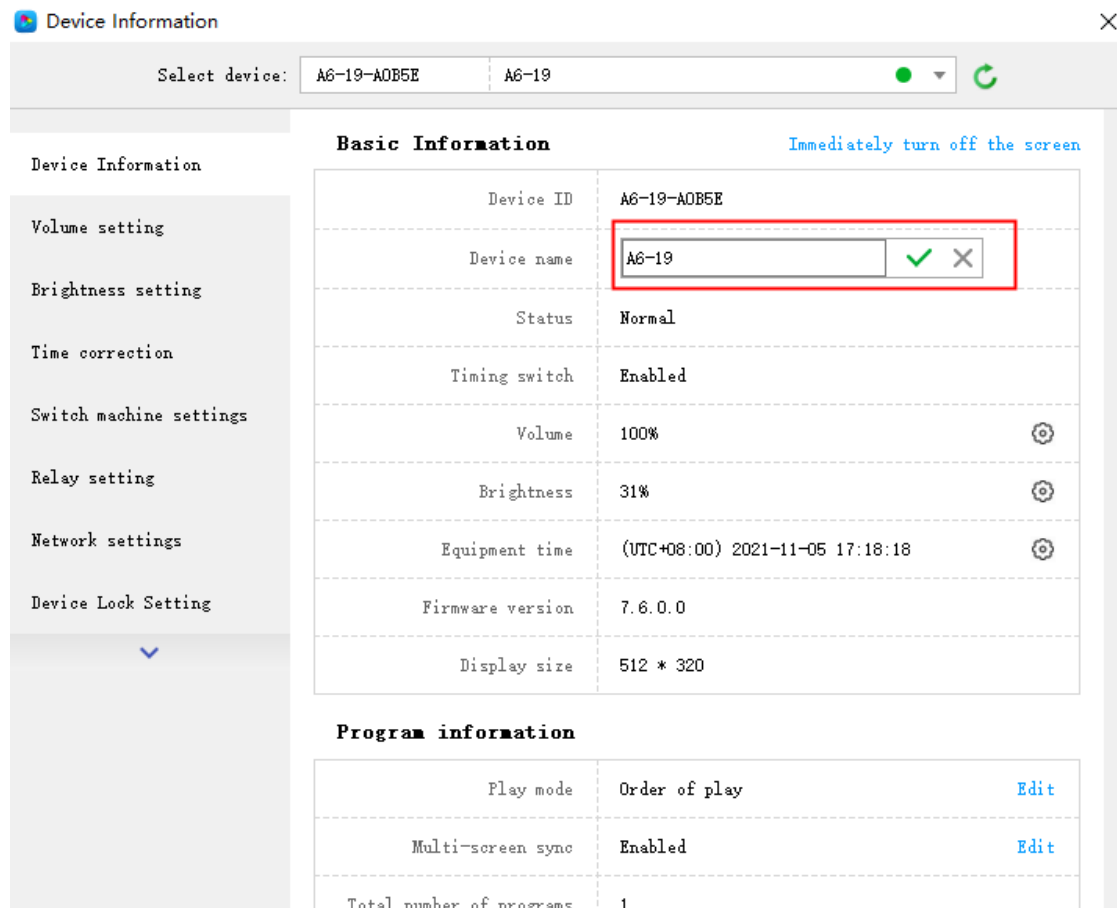


Fig. 7-10 Update Device name

8.Direct search by manual

Manually direct search the card is only for the control card of the LAN cross-network segment management, click [Control] - [Other Settings] - [Direct serch], enter the IP address of the control card in the IP address of the dialog box, and then click "Add" Button, after the control card is found, the control card's IP address, port number 9527, device ID, and device name are displayed in the dialog box, as shown in Figure 7-11.

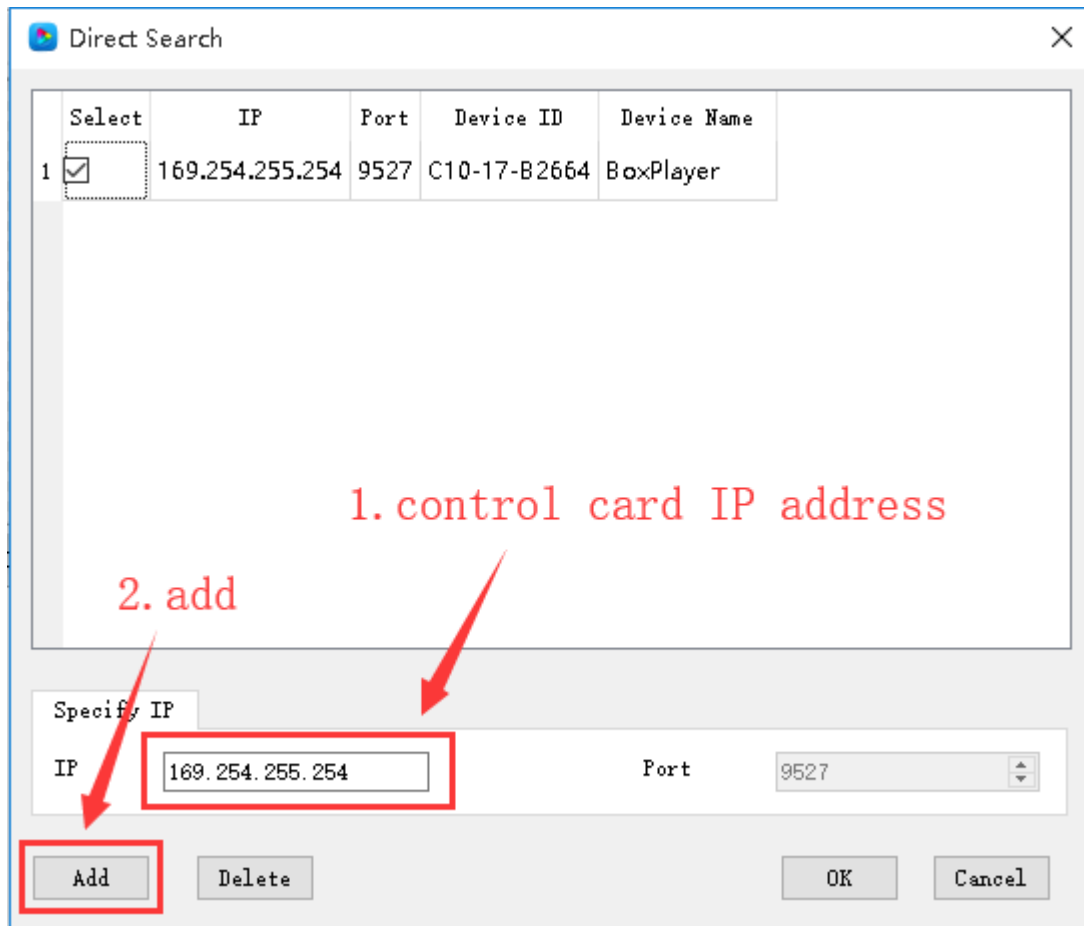


Fig. 7-11 Direct search

9.Start-up screen

The start-up screen refers to the booth screen displayed on the LED screen each time the control card is activated. In [Control] - [Other Settings] - [Startup Screen], select the corresponding control card in the device (you can use the name or device name or distinguish) And then select the boot image to display when the boot screen is enabled. As shown in Figure 7-12

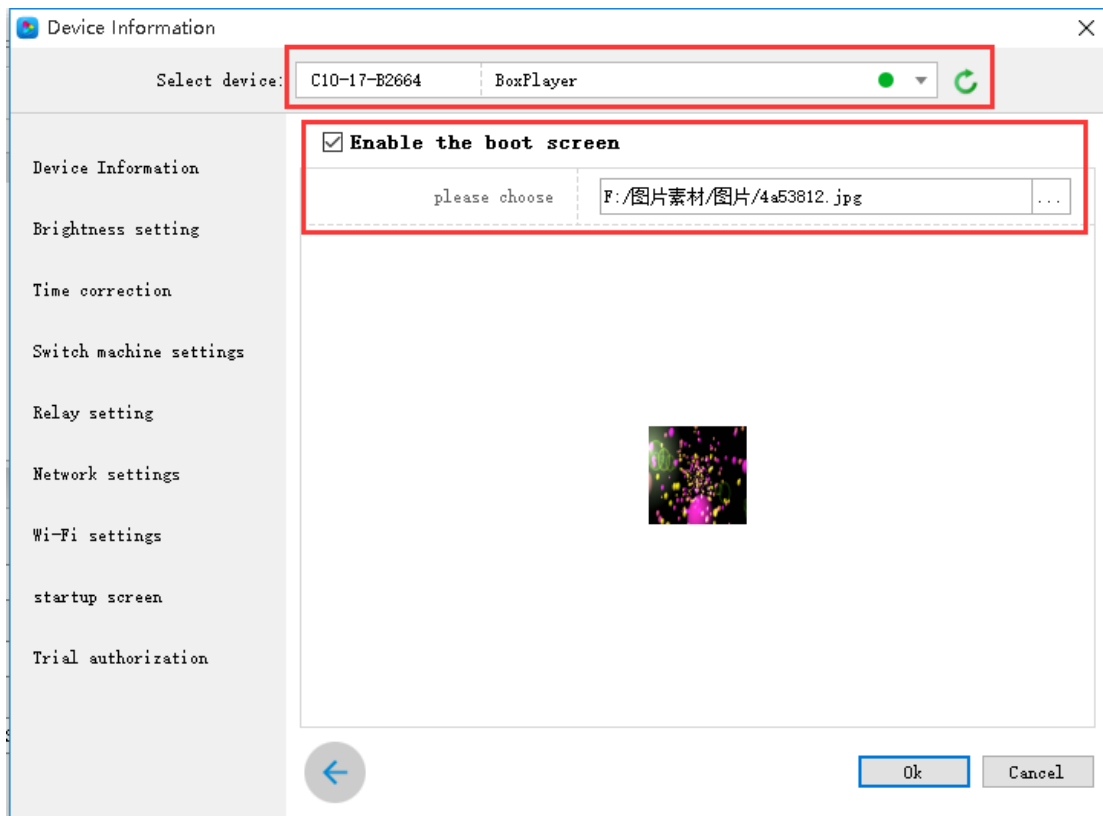


Fig.7-12 Start-up screen setting

10.Device Reboot

Click [Control] - [Other Settings] - [Device Reboot], in this dialog box, you can set the reboot time of the control card according to the specified time or week, as shown in Figure 7-13. The device reboot is mainly a function that is set to prevent the device from causing problems with the display screen or black screen after working for a long time.

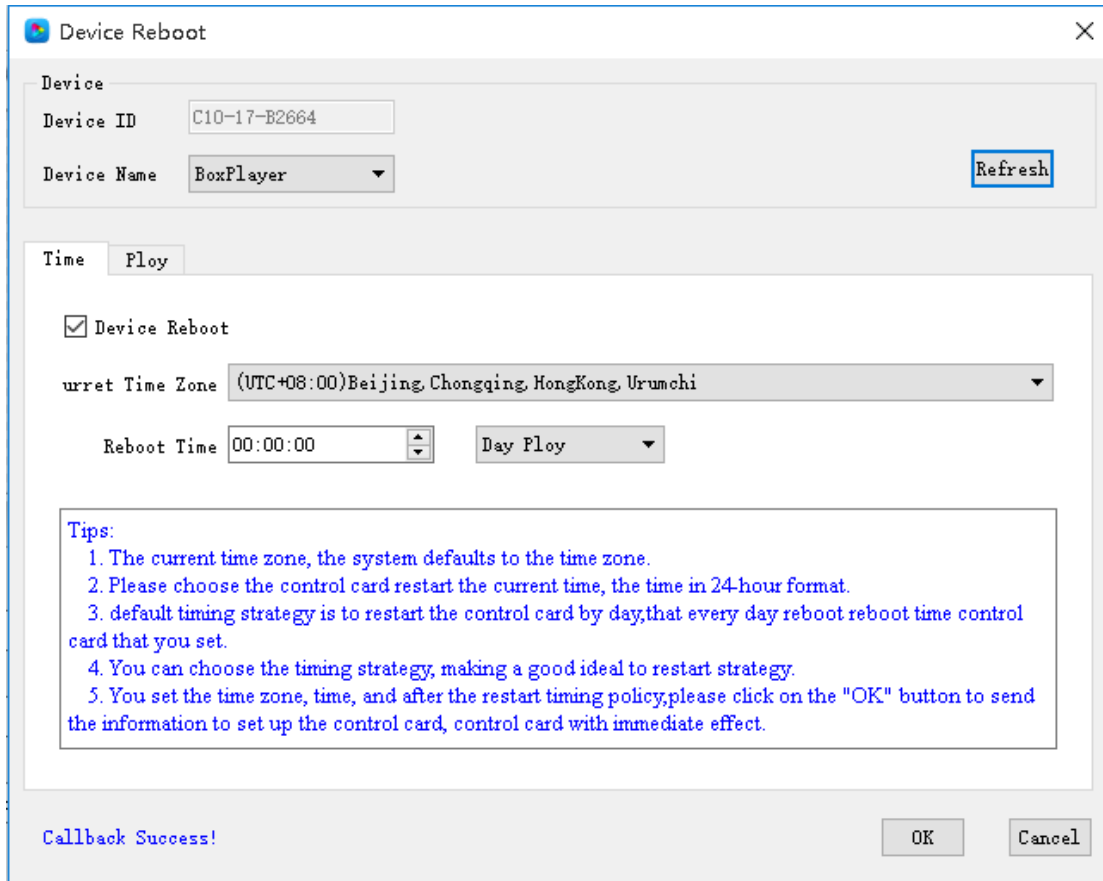


Fig. 7-13 Device Reboot setting

11. Wi-Fi settings

When the control card is installed with the Wi-Fi module, you can find the Wi-Fi settings tab in [Control] - [Device Information]. In this interface, set the Wi-Fi password, IP address segment, etc. of the control card AP mode. As shown in Figure 7-14. In Station mode, the control card can be connected to a nearby wireless network, and the Wi-Fi network is manually selected, as shown in Figure 7-15. This tab cannot be displayed if the Wi-Fi module is not installed on the control card.

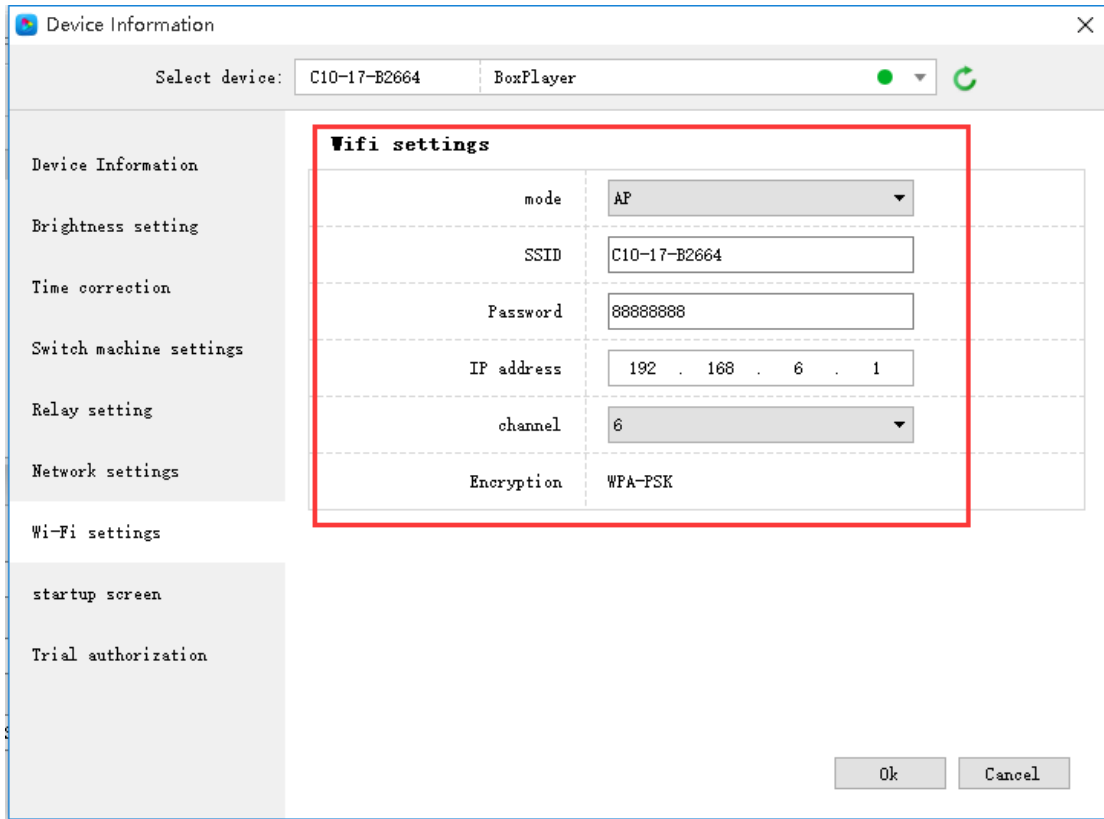


Fig.7-14 AP mode setting

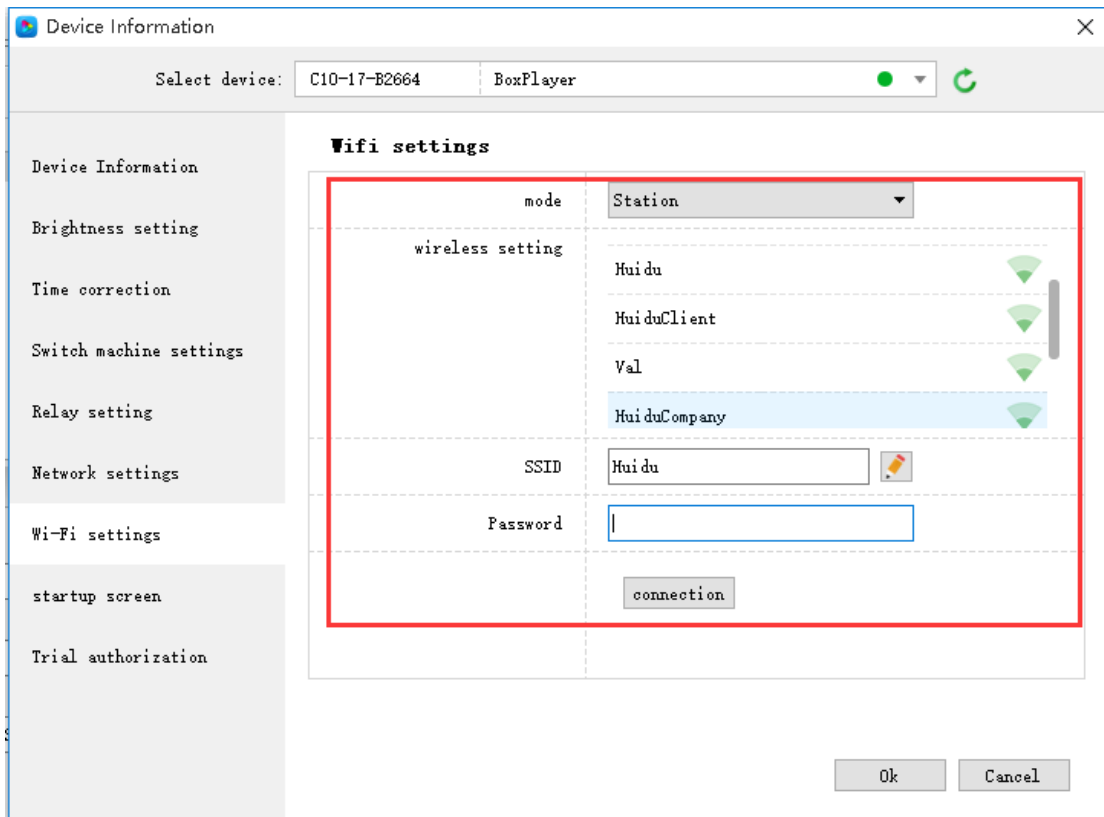


Fig.7-15 Station mode setting

12. Trial authorization

The trial authorization can set the control card to play the program normally within the specified trial time range, and the authorized trial period is 365 days. After setting the authorization, you need to keep in mind that if you forget the authorization code, the control card needs to be returned to the factory. The trial license is shown in Figure 7-16.

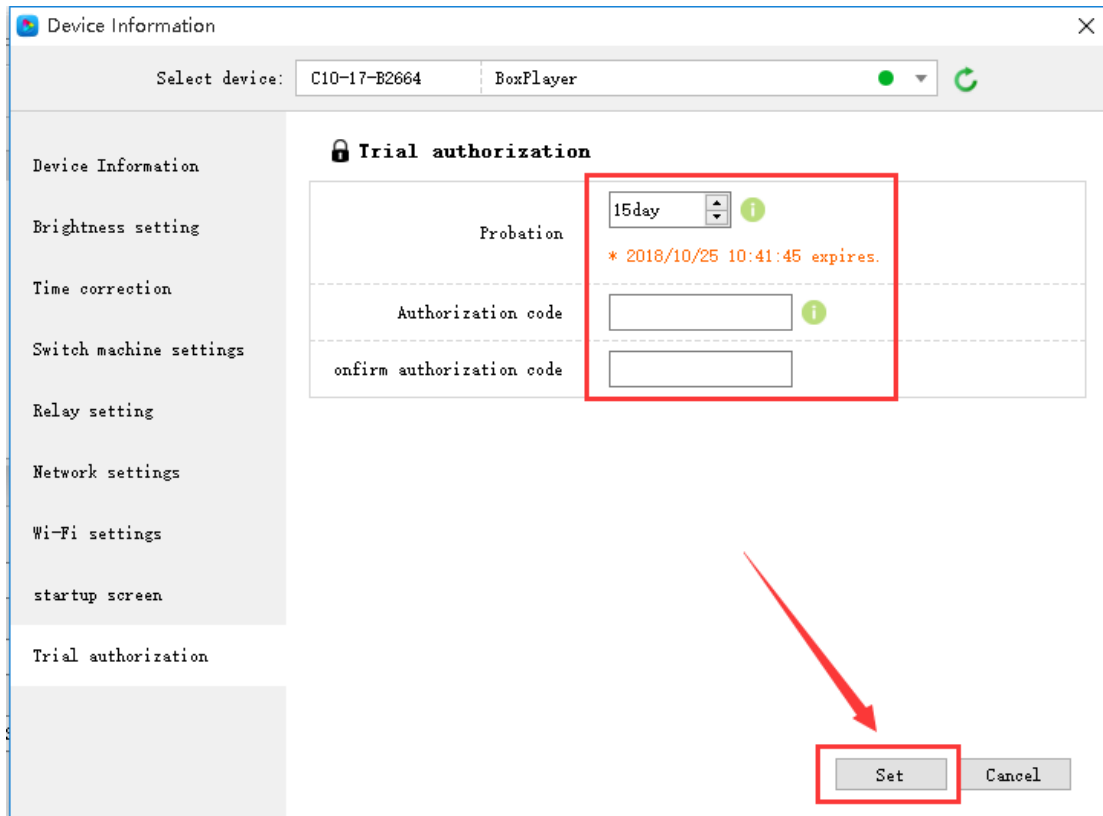


Fig.7-16 Trial authorization

Device information

In the device information dialog box, you can view some of the parameter status of the control card, such as display size, firmware version, device time, brightness, and so on. At the same time, in the device information, you can quickly enter the interface of some function settings, such as timer switch, boot screen, device time and so on.

In addition, the switch screen, program play mode, button definition, multi-screen sync, etc. need to be set in the device information dialog box.

13. Relay setting

Click [Control]->[Device Information]->[Relay Settings] to enter the relay setting interface, support 6-channel power circuit control, customize the name of the relay and the switching time of the power supply. As shown in Figure 7-17

Note: This function requires the control card to work all the time and is used in conjunction with the relay controller.

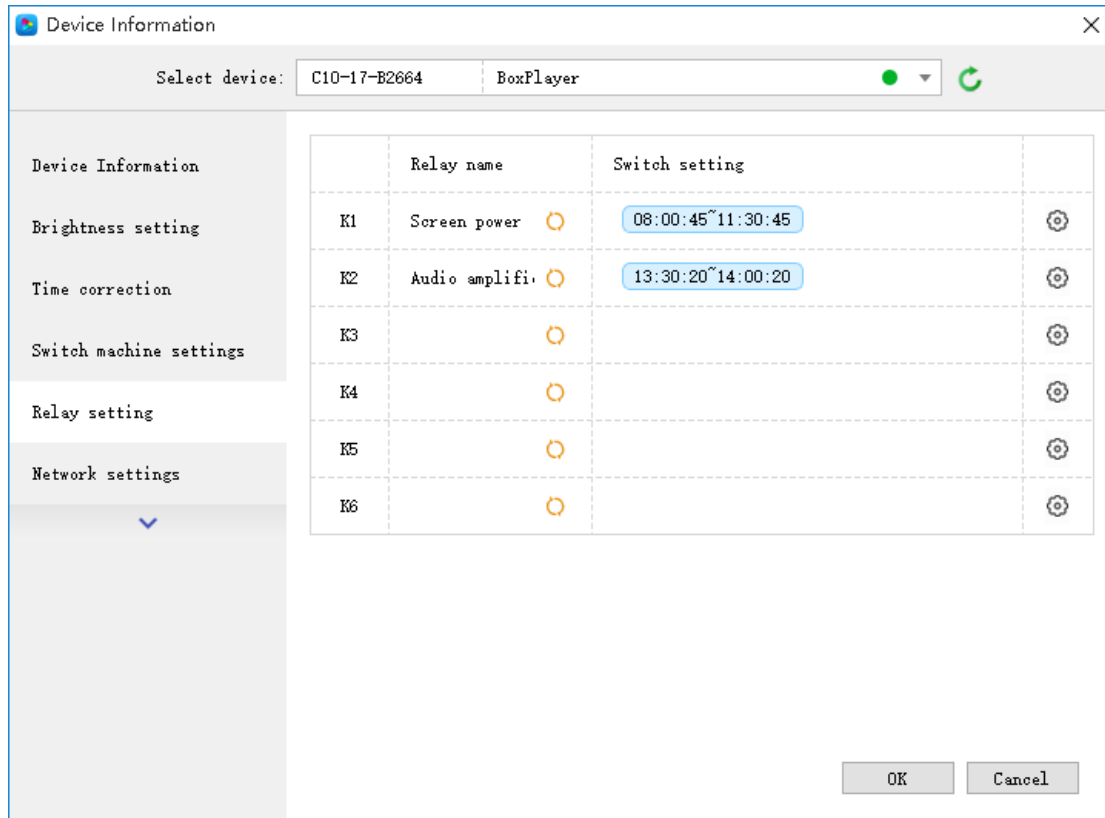


Fig.7-17 Relay setting window

Check “Use timer switch setting” to control the branch power according to the time of the timer. This setting can be controlled remotely via the internet. As shown in Figure 7-18

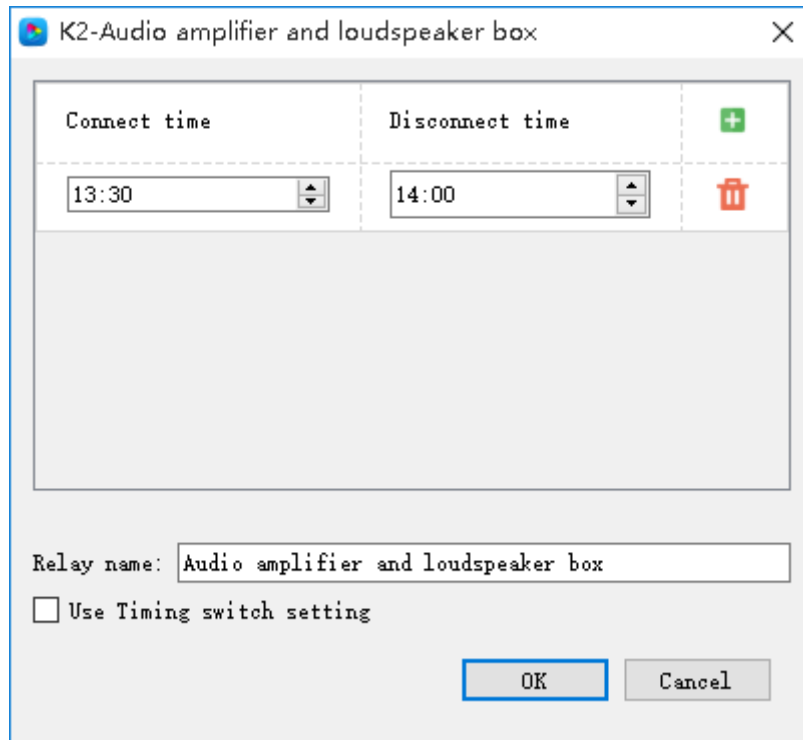


Fig.7-18 Relay setting

14.Network settings

Click [Control] -> [Device Information] -> [Network Settings] to enter the network setting interface, you can set the IP address, subnet mask, default gateway and DNS of the control card, or set to obtain automatically.

For some special network environments, you may need to use the MAC address of the device, you can view it on this interface, or you can customize the MAC address of the device on this interface. As shown in Figure 7-19:

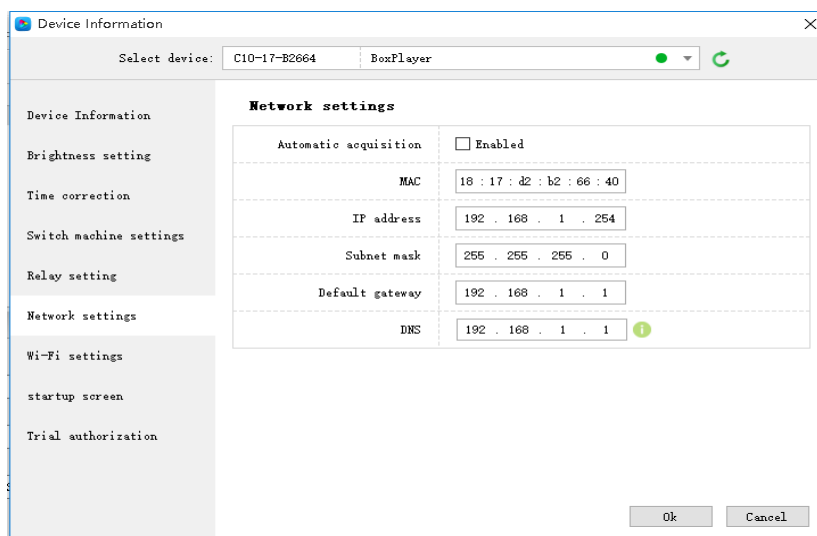


Fig.7-19 network settings

15.Cloud server setting

check [Click Setting]-[Cloud Server],Used to bind the device to the cloud server, enter the cloud server address, user name and click OK.

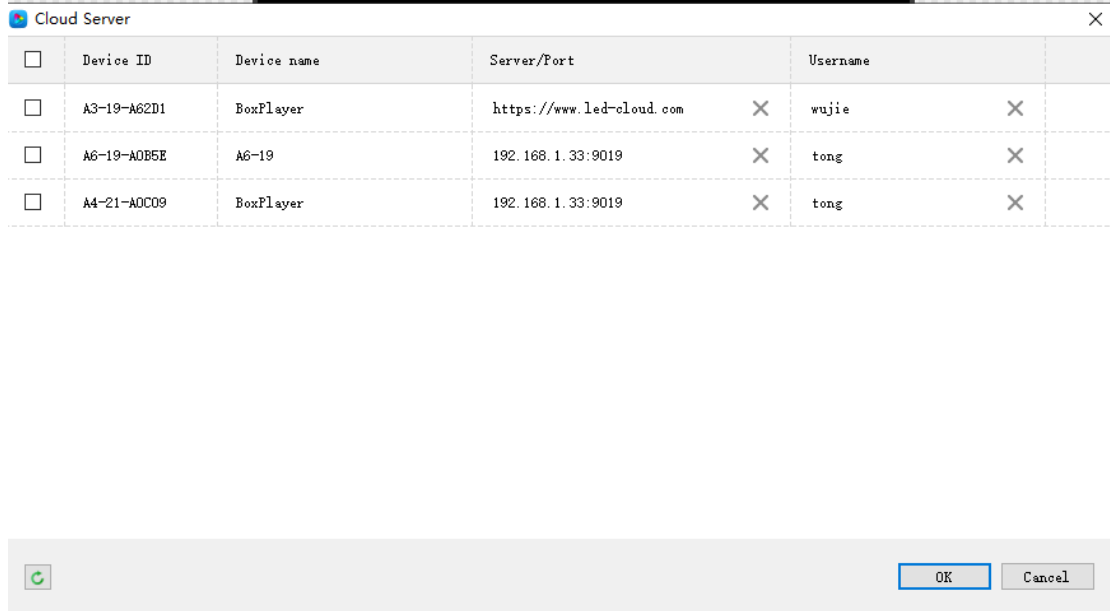


Fig.7-20 Cloud Server

16.Sync setting

Click [Setting]-[Sync setting].You can set multiple devices to play simultaneously.

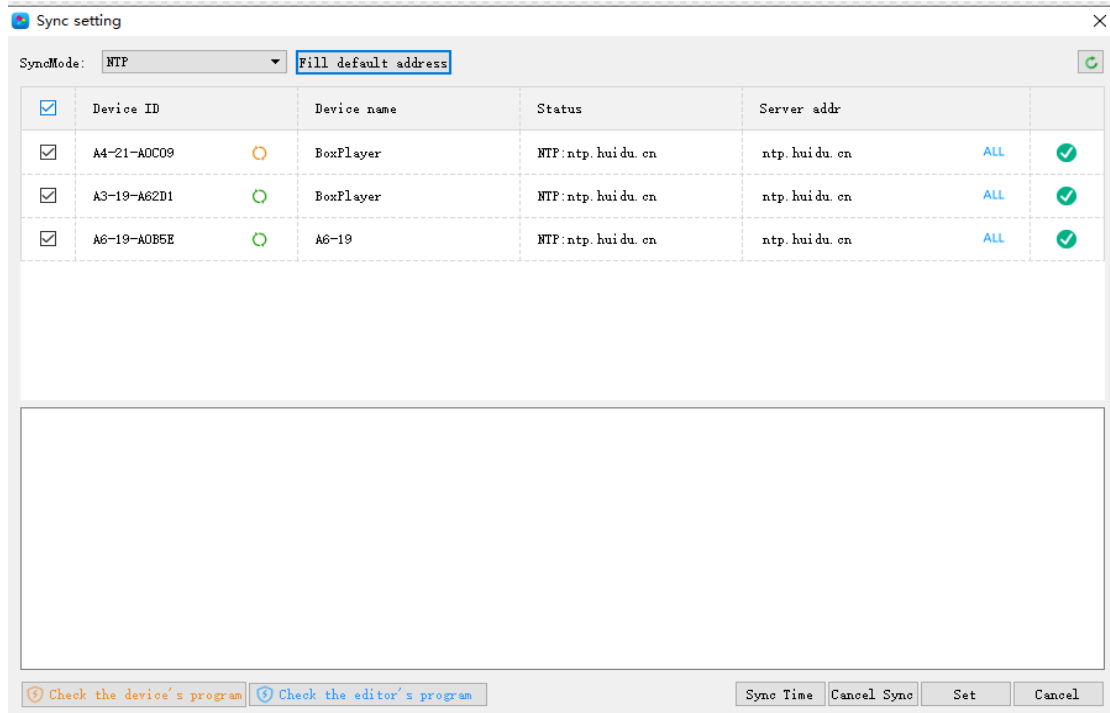


Fig.7-21 Sync setting

Multi-screen synchronization application scenarios are mainly in light pole screens, toll stations, airports, high-speed rail station advertising machines and other places. The conditions for multi-screen synchronization mainly include the same screen resolution, the same series of control cards, and two or more. The program and program content must be the same, and the program special effects need to be fixed.