

Product specification

multi-function card Y1

V1.0 20181226

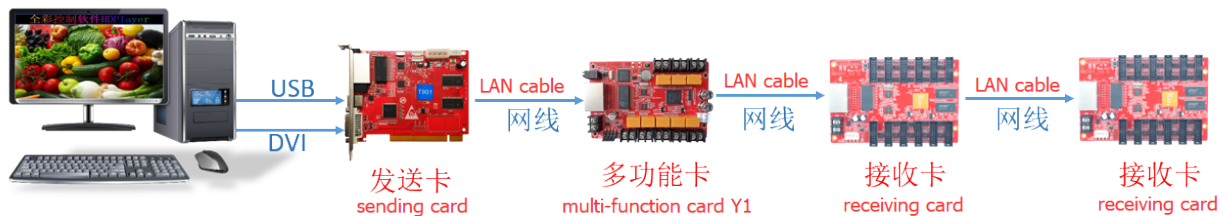
Function Feature

Y1 is a multi-function card with a variety of auxiliary functions, the specific functions are as follows:

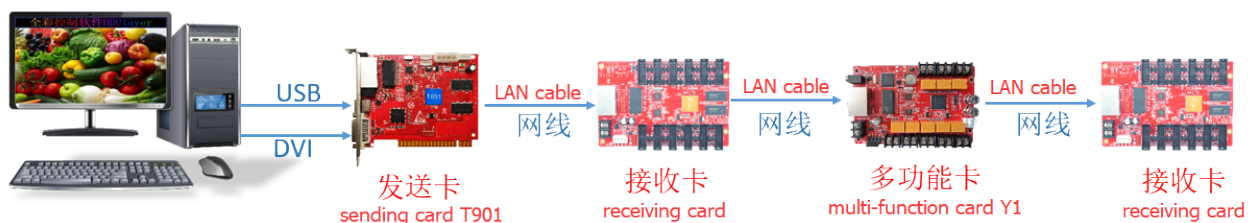
- 1) Using Gigabit Ethernet port communication;
- 2) Support Gigabit Ethernet port and synchronous sending card T901 communication, which can be cascaded in front, middle or behind of the receiving card;
- 3) 1 channel audio output;
- 4) On-board temperature and humidity module to support temperature/humidity monitoring inside of cabinet;
- 5) Support external temperature / humidity or single temperature module;
- 6) Support 8 channels relay switch control power supply;
- 7) Support timing control relay switch function, which can replace timer.

Connection method(3 methods)

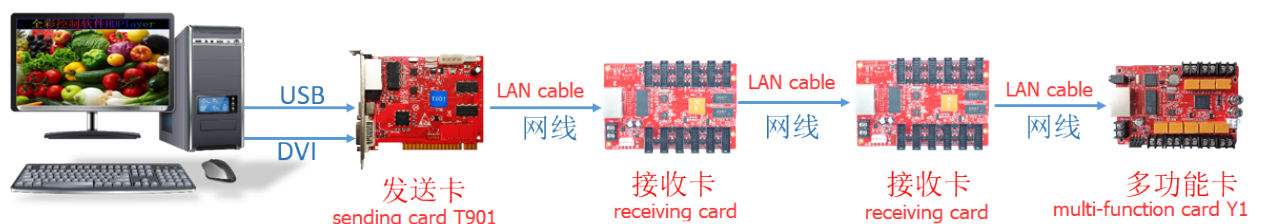
- 1) connected between sending card and the first receiving card, as shown below:



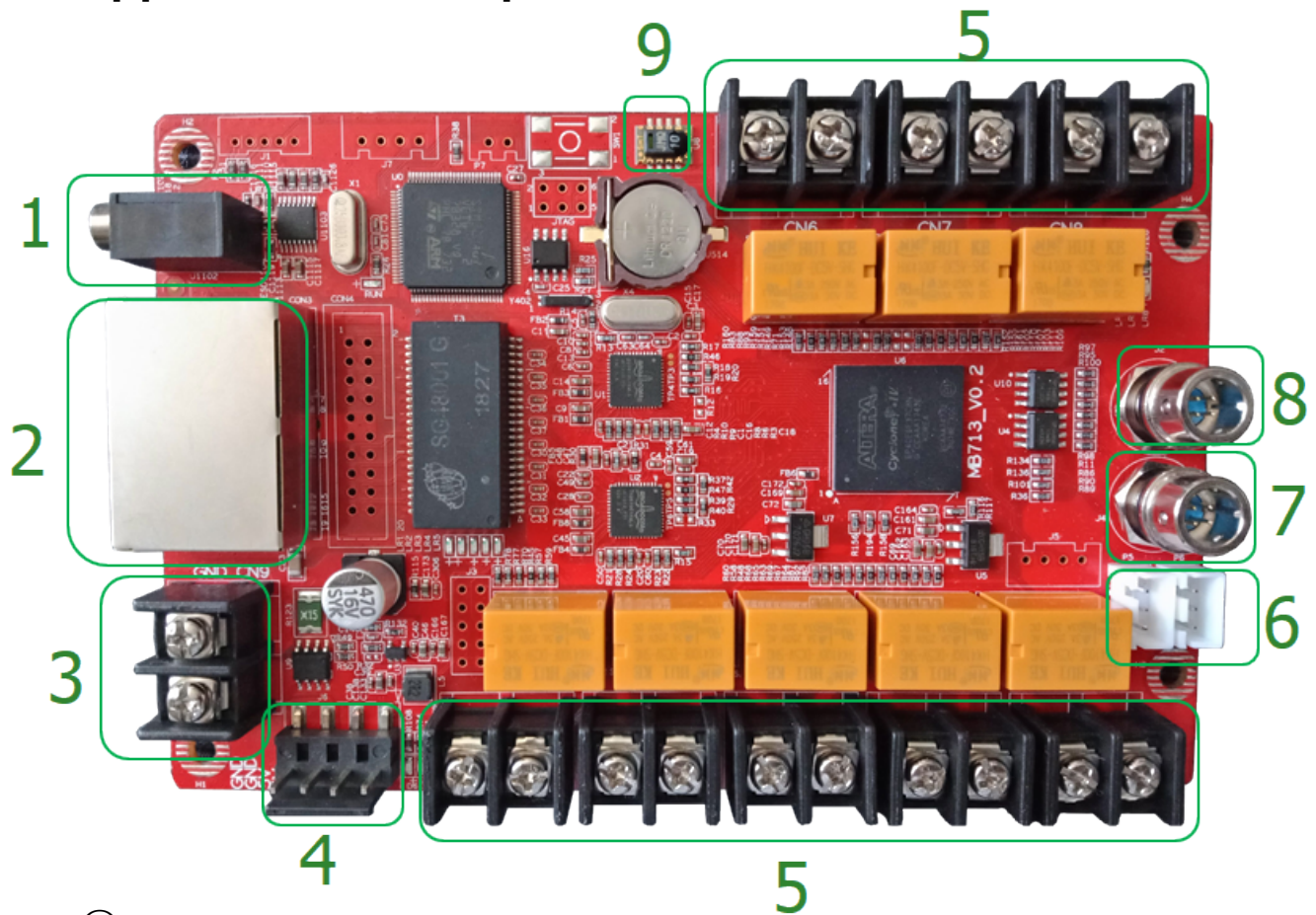
- 2) connected between any receiving card and receiving card, as shown below:



- 3) connected to the last receiving card, as shown below:



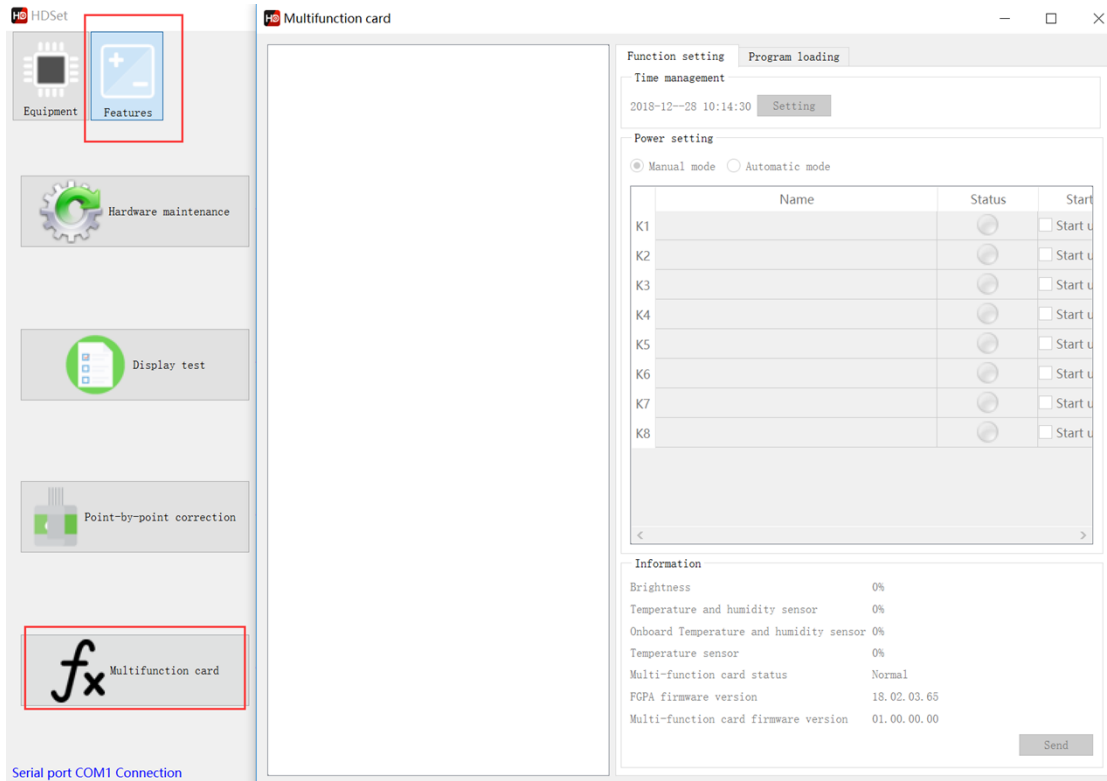
Appearance description



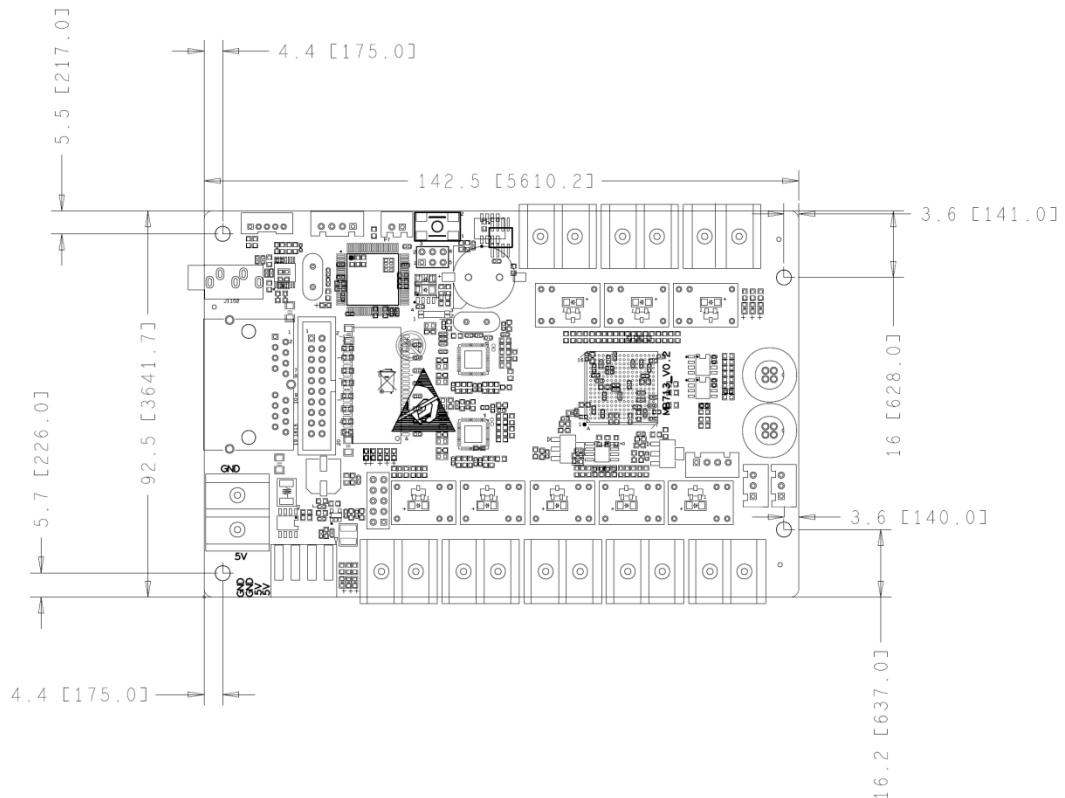
- ① : Audio output port;
- ② : Gigabit Ethernet port, connected to the sending card or another receiving card, the same as the two network ports, interchangeable.
- ③ : Power interface, connected to 5V voltage;
- ④ : Power interface, connected to 5V voltage;
- ⑤ : Contact opening and closing terminal, connecting screen power supply, air conditioning power supply and fan power supply;
- ⑥ : P5, single temperature (18B20) interface; P6, temperature/humidity (AM2301) interface;
- ⑦ : Brightness sensor interface;
- ⑧ : No function at present;
- ⑨ : Onboard temperature/humidity module.

Software configuration

Open the software HDSet and click “Function” → “Multi-Function Card” to make related settings.



Dimensions



Technical Parameters

	Minimum value	Typical value	Maximum
Rated voltage (V)	4.2	5.0	5.5
Storage temperature (° C)	-40	25	105
Working environment temperature (° C)	-40	25	80
Working environment humidity (%)	0.0	30	95
Power management control voltage (V)	/	/	250V/AC
Power Management Control Current (A)	/	/	3A

Precautions

- 1) To ensure long-term stable operation of the system, please use the standard 5V power supply voltage as much as possible.